

## CHD2 Polyclonal Antibody

Catalog number: 12311-1-AP

Size: 30 µg/150 µl

Source: Rabbit

Isotype: IgG

Synonyms:

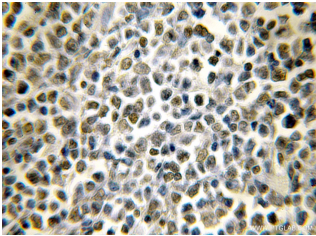
CHD2; ATP dependent helicase

CHD2, CHD 2, CHD2,

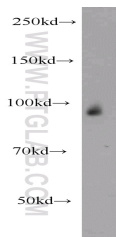
DKFZp54711315,

DKFZp686E01200,

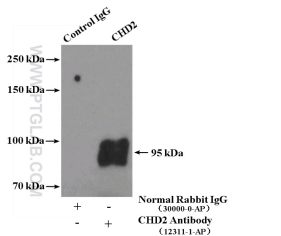
DKFZp781D1727, FLJ38614



Immunohistochemical of paraffin-embedded human lymphoma using 12311-1-AP(CHD2 antibody) at dilution of 1:50 (under 10x lens)



human placenta tissue were subjected to SDS PAGE followed by western blot with 12311-1-AP(CHD2 antibody) at dilution of 1:500



IP Result of anti-CHD2 (IP:12311-1-AP, 4µg; Detection:12311-1-AP 1:300) with human placenta tissue lysate 4000µg.

### Background

Chromodomain-helicase-DNA-binding protein 2, also named as ATP-dependent helicase CHD2, CHD2. It is a sequence-selective DNA-binding protein. Molecular mass of CHD2 is 211kD (201kd for isoform 2, 57kd for isoform 3).

### Applications

<b>Tested applications:</b>	ELISA, IHC, WB, IP
<b>Species specificity:</b>	Human, Rat; other species not tested.
<b>Calculated CHD2 MW:</b>	1828aa,211 kDa
<b>Observed CHD2 MW:</b>	95 kDa
<b>Positive WB detected in</b>	Human placenta tissue
<b>Positive IP detected in</b>	Human placenta tissue
<b>Positive IHC detected in</b>	Human lymphoma tissue
<b>Recommended dilution:</b>	WB: 1:200-1:2000
	IP: 1:200-1:1000
	IHC: 1:20-1:200

Application key: WB = Western blotting, IHC = Immunohistochemistry, IF = Immunofluorescence, IP = Immunoprecipitation

### Immunogen information

<b>Immunogen:</b>	Ag2960
<b>GenBank accession number:</b>	BC020810
<b>Gene ID (NCBI):</b>	1106
<b>Full name:</b>	Chromodomain helicase DNA binding protein 2

### Product information

<b>Purification method:</b>	Antigen affinity purification
<b>Storage:</b>	PBS with 0.1% sodium azide and 50% glycerol pH 7.3. Store at -20°C.