

**LOOK
Inside!**

For more great deals

lab **Buyer**

Summer Edition 2018

Supplies • Equipment • Instruments • Chemicals/Reagents



Globe

Buy 2 GET 1 FREE

Buy 2 Disposable Borosilicate Glass Tubes
or Plastic Closures and get 1 FREE

Pg. 3

DWK Kimble

Buy a Case of Colorware
Class A Volumetric Flasks

and Receive 1 FREE Case
of Colorware Beakers

Pg. 7

labForce

Pre-Assembled Boston Rounds

Pg. 5

96-Well Deep Round
and Square Plates

Pg. 10

Ultra-High Speed 15mL &
50 mL Centrifuge Tubes

Pg. 12

Binder

QUICK SHIP Available!

on the Avante Garde Line Series
of Drying/Heating Chambers
and Incubators

Pg. 11



**Thomas
Scientific**

We Believe You Are Important
— How Can We Help?

www.thomassci.com
phone 800.345.2100

WELCOME!

Thomas Scientific is a distributor of laboratory supplies, equipment and chemicals. The products in this catalog represent only a small offering from our extensive catalog and website. We're here to make your purchasing process as simple as possible. For additional models, sizes, packaging, and accessories not shown in our catalogs or if you just need help selecting a product, contact us at 800-345-2100 or visit us on the web at www.thomassci.com.



**Thomas Scientific accepts VISA, Master Card,
American Express and the IMPAC card
for government buyers.**

PO's accepted for registered accounts.

OUR MISSION

To help science create a better world by providing quality products with personal, timely and efficient service

Delivering Quality Scientific Supplies Worldwide Since 1900

**Special offers and pricing are valid through September 30, 2018,
unless otherwise noted.**

NOTE: Offers in this catalog are void where prohibited by law or company policy. Shipping charges are not included. Prices and offers are subject to change without notice and are not to be combined with other offers/discounts or contract pricing. Valid in USA only. Dealer/reseller sales not applicable. For web orders, enter the promo code in the yellow box on the back of this catalog. For phone orders, please supply the promo code to the customer service representative when ordering. Discount pricing shown must be specified when placing order. Returned products will be subject to billing for Free Items at list price. Free items in 'Buy/Get 1 Free' offers will be the item of lowest value unless otherwise noted. Giveaways and free products may be shipped separately. Allow 4-6 weeks for delivery.

Suppliers featured in this issue are:

analytikjena
An Endress+Hauser Company

BINDER
Best conditions for your success

BRANDTECH
SCIENTIFIC, INC.

CORNING

**DURAN
WHEATON
KIMBLE**

globe
SCIENTIFIC INC.

HAMILTON
THE MEASURE OF EXCELLENCE™

heidolph
research made easy

**J.G.
Pinneran**
Associates, Inc.

LABCONCO

labForce
powered by Thomas Scientific

METTLER TOLEDO

OHAUS

PolyScience

**thermo
scientific**

**Thomas
Scientific**

labForce
powered by Thomas Scientific

It's Just What Your Lab Needs

SUPPLIES • EQUIPMENT • INSTRUMENTS
CHEMICALS • FURNITURE



Looking for additional offers?

Check out our

Deal Central

section on the web

www.thomassci.com/deals

YOUR CHOICE — Buy 2 GET 1 FREE!*

Disposable Borosilicate Glass

CULTURE TUBES

Globe Scientific offers a high quality line of borosilicate glass culture tubes. These tubes offer exceptional quality at great prices. They are neatly packaged in heavy duty boxes and shrink wrapped to keep them particle free. The boxes are compact and designed to fit into most test tube dispensers.

- Made from superior quality borosilicate glass to reduce pH changes and contaminants that are potentially leached from soda lime glass tubes
- Tubes feature well-rounded bottoms and smooth, fire-polished rims
- Dimensional specifications are rigidly controlled for reliable, uniform results
- Produced in an ISO 9001:2008 certified factory
- Tubes can be used for tissue culture and blood banks

Item #	Size	Overflow Capacity	Packaging	Unit
1218M69	10 x 75mm	4mL	250/box, 4 boxes/case	1000
1218M70	12 x 75mm	6mL	250/box, 4 boxes/case	1000
1218M71	13 x 100mm	10mL	250/box, 4 boxes/case	1000
1218M72	16 x 100mm	14mL	250/box, 4 boxes/case	1000
1218M73	16 x 125mm	19mL	250/box, 4 boxes/case	1000
1218M74	16 x 150mm	23mL	250/box, 4 boxes/case	1000
1158W40 NEW	18 x 150mm	29mL	125/box, 4 boxes/case	500
1158W41 NEW	20 x 150mm	36mL	125/box, 4 boxes/case	500

Diamond CULTURE TUBE CAPS

- Fit plain end culture tubes and flasks with DeLong style necks or ports
- Molded from durable, autoclavable polypropylene (PP)
- Ridges inside cap provide secure grip and gas exchange
- Available in five colors for easy sample identification and organization
- Maintain sterility without cotton plugging
- Reduce sample evaporation compared to cotton plugging
- Provide same evaporation and sterility benefits as stainless steel closures

By popular demand!

NEW!

Max Tube Diameter	Bag Qty.	Unit	Item#				
			Natural	Blue	Green	Red	Yellow
13mm	100	1000	1162A20	1162A24	1162A22	1162A21	1162A23
16mm	100	1000	1162A25	1162A29	1162A27	1162A26	1162A28
18mm	100	1000	1162A30	1162A34	1162A32	1162A31	1162A33
20mm	100	500	1162A35	1162A39	1162A37	1162A36	1162A38
25mm	100	500	1162A40	1162A44	1162A42	1162A41	1162A43



*Offers valid July 15 thru October 15, 2018. Mix & match. Item of equal or lesser value free.

Visit thomassci.com/deals for more information and redemption forms.

globe[®]
SCIENTIFIC INC.



WHEATON® COMPLETE PAK

DESIGNED BY YOU CRAFTED BY US

A variety of sterilized, off-the-shelf
ready-to-use products

A solution for any application.



DURAN
WHEATON
KIMBLE

Visit **thomassci.com**
Keywords: 1162C57 and 1162C75



Your Missing Piece of the Puzzle

The New XSR and XPR Precision Balances

The XPR and XSR precision balances are the missing pieces to your lab operation. Building off of the success of the XPE balance line, the XPR features a large, vibrant color touchscreen with a redesigned user interface. The platform provides essential user management options and a notepad for electronic documentation.

The XSR, successor to the XS balance line, boasts a new color touchscreen with the intuitive StatusLight™. Combined with multiple interface options and method parameters, the XSR assures your balance is always connected and ready for use.

Don't let a missing piece leave your lab puzzled. Learn more at www.thomassci.com/mettlertoledo.

METTLER TOLEDO

labForce

powered by *Thomas Scientific*

Pre-Assembled Clear Boston Rounds with PTFE Lined Cap

Purchasing assembled bottles reduces sample contamination and streamlines ordering and inventory needs. The PTFE lined cap is inert making it a great option for use with strong acids and corrosive liquids.



Thomas No.	Description	Qty/Case
1162A67	1oz Clear Boston Round Assembled with 20-400 White PP PTFE Lined Cap, Bulk Case	432
1162A68	1oz Clear Boston Round Assembled with 20-400 White PP PTFE Lined Cap, Convenience Case	48
1162A69	2oz Clear Boston Round Assembled with 20-400 White PP PTFE Lined Cap, Bulk Case	288
1162A70	2oz Clear Boston Round Assembled with 20-400 White PP PTFE Lined Cap, Convenience Case	24
1162A71	4oz Clear Boston Round Assembled with 22-400 White PP PTFE Lined Cap, Bulk Case	160
1162A72	4oz Clear Boston Round Assembled with 22-400 White PP PTFE Lined Cap, Convenience Case	24
1162A73	8oz Clear Boston Round Assembled with 24-400 White PP PTFE Lined Cap, Bulk Case	108
1162A74	8oz Clear Boston Round Assembled with 24-400 White PP PTFE Lined Cap, Convenience Case	24
1162A75	16oz Clear Boston Round Assembled with 28-400 White PP PTFE Lined Cap, Bulk Case	60
1162A76	16oz Clear Boston Round Assembled with 28-400 White PP PTFE Lined Cap, Convenience Case	12
1162A77	32oz Clear Boston Round Assembled with 33-400 White PP PTFE Lined Cap	12



stretchease

Powder-Free Nitrile Examination Gloves

- Powder free
- More chemical resistant
- Exceptional strength
- Textured



A great alternative for people who are sensitive to latex!

Thomas No.	Description	Quantity	
		Pack	Case
1159G03	Stretchease, Powder Free, Nitrile Exam Gloves, XS	100	1000
1159G04	Stretchease, Powder Free, Nitrile Exam Gloves, S	100	1000
1159G05	Stretchease, Powder Free, Nitrile Exam Gloves, M	100	1000
1159G06	Stretchease, Powder Free, Nitrile Exam Gloves, L	100	1000
1159G07	Stretchease, Powder Free, Nitrile Exam Gloves, XL	100	1000
1159G08	Stretchease, Powder Free, Nitrile Exam Gloves, XS - Big Case Quantity	—	2500
1159G09	Stretchease, Powder Free, Nitrile Exam Gloves, S - Big Case Quantity	—	2500
1159G10	Stretchease, Powder Free, Nitrile Exam Gloves, M - Big Case Quantity	—	2500
1159G11	Stretchease, Powder Free, Nitrile Exam Gloves, L - Big Case Quantity	—	2500
1159G12	Stretchease, Powder Free, Nitrile Exam Gloves, XL - Big Case Quantity	—	2300

Your sample depends on it



Hamilton Company has a full-range of quality syringes for your PAL autosamplers:

HAMILTON
THE MEASURE OF EXCELLENCE™

S-Line

Exceptional performance for everyday use in autosampler injections at a great value

C-Line

Minimizes the potential for bent needles with a keyed flange design

X-Type

For near zero sample carry over with HPLC sample injections

Some of the most popular Agilent autosamplers use the world's best syringe.

Fits the Agilent 7670, 7671
and 7672 autosampler family

Fits the Agilent 7673, 7683, 7693A
and 6850 autosampler family

Hamilton syringes are handmade with an unmatched attention to detail. The manufacturing process and quality assurance procedures ensure that every syringe we sell will provide superior accuracy and precision.

Hamilton proudly offers syringes for your Agilent GC autosampler.

HAMILTON
THE MEASURE OF EXCELLENCE™



Buy a Case of Kimble Brand Colorware Class A Volumetric Flasks, Receive 1 FREE Case of Colorware Beakers

Class A Colorware Flasks

- KIMAX® ask with a single graduation ring blasted on the neck, calibrated to contain
- A Standard Taper ground glass stopper is supplied, along with a durable, color, matte finish marking area for use with an ordinary pencil
- Replacement stopper is 850100
- All sizes feature double capacity scales with easy-to-read graduations
- Designed from ASTM Specification E288, Class A requirements
- Manufactured from 33 expansion, low extractable borosilicate glass conforming to USP Type I and ASTM E438, Type I, Class A requirements

Visit www.thomassci.com/deals for qualifying products and redemption information

Thomas No.	Capacity Tolerance (mL)	Standard Taper Stopper	Qty/Case
Red			
4989J37	25; ± 0.03	9	6
4989J39	50; ± 0.05	9	6
4989J41	100; ± 0.08	13	6
4989J43	250; ± 0.12	16	6
4989J45	500; ± 0.20	19	6
4989J47	1000; ± 0.30	22	6
Yellow			
4989J01	25; ± 0.03	9	6
4989J03	50; ± 0.05	9	6
4989J05	100; ± 0.08	13	6
4989J07	250; ± 0.12	16	6
4989J09	500; ± 0.20	19	6
4989J11	1000; ± 0.30	22	1
Green			
4989J13	25; ± 0.03	9	6
4989J15	50; ± 0.05	9	6
4989J17	100; ± 0.08	13	6
4989J19	250; ± 0.12	16	6
4989J21	500; ± 0.20	19	6
4989J23	1000; ± 0.30	22	1
Blue			
4989J25	25; ± 0.03	9	6
4989J27	50; ± 0.05	9	6
4989J29	100; ± 0.08	13	6
4989J31	250; ± 0.12	16	6
4989J33	500; ± 0.20	19	6
4989J35	1000; ± 0.30	22	1



Maximize Your Hotplate



Heidolph Magnetic Stirring Hotplates

Choose one of four premium magnetic stirring hotplates and then maximize your Hei-PLATE with any of the convenient accessories.

- Hermetically sealed housing protects all mechanical and electronic components
- Fire-resistant, die-cast housing
- Three-year warranty



Description	Accuracy	Display	Temp. Sensor Comp.	Thomas No.	Mfr. No.	Price
Hei-Standard	+/- 2%	Analog	No	1155N40	036110519	\$1170.00
Hei-Tec	+/- 2%	Digital	Yes	1155N41	036110550	\$1170.00
Hei-Connect	+/- 2%	Digital	Yes	1155N42	036110601	\$1646.00
Hei-End	+/- 1%	Digital	Yes	1155N43	036110580	\$2281.00



Heat-On™ Blocks

The safest, fastest and most efficient way to heat and stir round bottom flasks from 10 ml to 5 liters.

Description	Thomas No.	Mfr. No.	Price
Heat-On 1L	1202Y64	015882080	\$575.97
Heat-On 3L	1202Y67	015882100	\$859.71
Heat-On 5L	1202Y88	015882300	\$1,334.26



Findenser

Affordable and green, the Findenser now replaces traditional water condensers-no more flooded labs. Available in regular and mini sizes.

Description	Thomas No.	Mfr. No.	Price
B24 Cone	1202Y51	015610000	\$481.78



Carousel

The patented Carousel 6 Plus simultaneously heats, stirs and refluxes multiple samples under an inert atmosphere. Accepts round bottom flasks including: 5-ml, 10-ml, 25-ml, 50-ml, 100-ml, 170-ml and 250-ml sizes.

Description	Thomas No.	Mfr. No.	Price
Carousel 6 Plus Heated	1155N44	015850440	\$5870.00



Orion Star T910

- Thermo Scientific™ Orion™ T910 pH titrators are designed to increase your laboratory productivity by automating titrations
- Core electrochemistry technology is integrated with a state-of-the-art reagent dispensing system to create modern, simplified automated titrators designed to make performing titrations easier, more reliable and more reproducible than manual titrations
- Titration techniques include equivalence point titrations and preset pH endpoint titrations for versatile sample analysis



Orion Star T920

- Use the Orion Star T920 redox titrator for dedicated redox titrations including sulfite/SO₂ and reducing sugar in juice and wine, ascorbic acid (vitamin C) and peroxide value in food products, dissolved oxygen in wastewater by Winkler titration and organic matter in soil
- Titration techniques include equivalence point titrations and preset mV endpoint titrations for versatile sample analysis
- Pair the titrator option with any of our premium Orion redox electrodes or select our preconfigured titrator and electrode kit for a bundled discount



Orion Star T930

- Thermo Scientific™ Orion Star™ T930 ion titrators are designed to increase your laboratory productivity by automating titrations
- Core electrochemistry technology is integrated with a state-of-the-art reagent dispensing system to create modern, simplified automated titrators designed to make performing titrations easier, more reliable and more reproducible than manual titrations
- Titration techniques include equivalence point titrations and preset mV endpoint titrations plus multiple known addition (MKA) mode



Orion Star T940

- The Thermo Scientific™ Orion Star™ T940 all-in-one titrators are designed to increase your laboratory productivity by automating titrations
- Core electrochemistry technology is integrated with a state-of-the-art reagent
- The automated titrant delivery system with high-accuracy burette and dispenser provides consistent results
- Automatic results calculations simplifies analysis and reduces computational errors

For product details and more information about any of the **Thermo Scientific Orion Star** models, please visit **thomassci.com** and search Keyword: **Titration**

thermoscientific

qTOWER³ Series Quantitative Real Time PCR Thermal Cyclers

analytikjena
An Endress+Hauser Company

Promo: Buy a qTOWER³ - receive free equipment

qTOWER³ Thermal Cyclers feature:

- Open platform for all common plasticware types (96 well plates, 8 or 12 well strips and individual tubes)
- Fast, efficient ramping rates: heating 8°C/sec; cooling 6°C/sec
- Optimized for volumes of 10 - 80 µl with detection of 96 samples in 6 sec, regardless of number of targets
- qTOWER³ G includes gradient temperature range of up to 40°C across 12 columns/zones
- 10 year warranty on system optical components; 2 year warranty on remainder of system

Free laptop loaded with qPCRsoft software for control and analysis
Free color module 1 for SYBR Green/FAM/Alexa488 dyes
Free starter kit with 96 well microplates and sealing films

Part #	Description	Price
1182K98	qTOWER ³ with free items	\$ 22,254.02
1182K99	qTOWER ³ G with free items	\$ 23,425.83

**Free equipment
valued at over
\$3,000!**



qTOWER 115V models listed. 10-year warranty provided on optical detection components. Additional color, FRET and protein modules available for loading up to 6 modules simultaneously. Go to ThomasSci.com for additional specifications. Free items included with purchase. Offer valid in North America February 1, 2018 through March 31, 2019.

thermo**scientific**

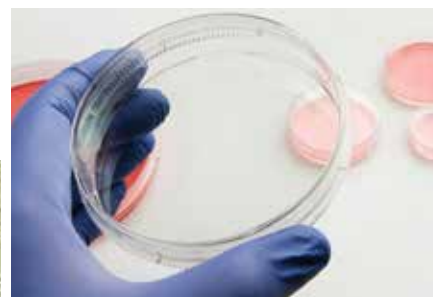
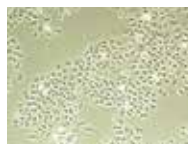
Thermo Scientific Nunc EasYDishes

Next generation dish design provides novel ergonomic and ease-of-use benefits

Thermo Scientific™ Nunc™ EasYDishes are next generation cell culture dishes that are designed to improve handling, stacking and transporting of cell cultures in your lab.

Cell Culture Applications

Cell Lines and Primary Cells



Ordering information

Nunc EasYDishes, Cell Culture Treated

Cat. No.	Description
1158K00	35 mm Dish, 8.8 cm ² culture area, Height (exterior) 13 mm, Sterile with lid, 10/pack 500/case
1158K01	60 mm Dish, 21.5 cm ² culture area, Height (exterior) 16 mm, Sterile with lid, 10/pack 280/case
1158K02	100 mm Dish, 56.7 cm ² culture area, Height (exterior) 17 mm, Sterile with lid, Re-sealable packaging, 10/pack 150/case
1158K03	100 mm Dish, 56.7 cm ² culture area, Height (exterior) 21 mm, Sterile with lid, Re-sealable packaging, 10/pack 250/case
1158K04	150 mm Dish, 145 cm ² culture area, Height (exterior) 21 mm, Sterile with lid, Re-sealable packaging, 10/pack 80/case



Limit 3 Per Lab

Nalgene HDPE Wide-Mouth Bottles

Buy 2 Cases of Thermo Scientific™ Nalgene™ Wide Mouth HDPE Bottles with Closure & Get 1 at No Additional Cost



Limit 3 Per Lab

Nalgene Rapid-Flow Filter Units

Buy 2 Cases of Nalgene™ Rapid-Flow™ Filters and Get 1 Case of Equal or Lesser Value At No Additional Cost!
Visit link below for offer details and product list.

Cat. No.	Product Size	No./Pack/Case
1717F10	30mL	72
1717F20	60mL	72
1717F27	125mL	72
1717F40	250mL	72
1717F54	500 mL	48
1717F70	1L	24

Redeem special offers now at
thermofisher.com/labessentials

ThermoFisher
SCIENTIFIC

96-Well Deep Round and Square Plates

The labForce plates have been designed to simplify the interchanging of plates in automated systems. Conical base helps with sample concentration, reconstitution and centrifugation. The V bottom permits total liquid removal. The raised well rims improve heat sealing. No inner edges allows for easier collection of magnetic beads.



96-Well Deep Round – Raised Rim – 1mL

- Manufactured from pre-tested polypropylene for low extractables
- 42mm Height
- DNase/RNase Free
- Cylindrical well with round bottom for optimal mixing and recovery
- Alphanumeric grid referencing
- Rimmed version eliminates cross contamination and permits better sealing
- Non-rimmed version allows use of vials
- Can be stored at 80°C
- 50 plates per case – packaged in sealed sleeves of 5 plates



96-Well Deep – Raised Well – 350uL, 1mL and 2mL per well

- Manufactured from virgin polypropylene
- 44mm Height
- DNase/RNase Free
- Conical base helps in sample concentration, reconstitution and centrifugation
- Alphanumeric grid referencing
- Raised rims improves heat sealing
- "V" Bottom permits total liquid removal
- Non-rimmed allows better collection of magnetic beads
- 50 plates per case – packaged in sealed sleeves of 5 plates



96-Well Deep Round – Common Wall – 2mL per well

- Manufactured from pre-tested polypropylene for low extractables
- 45mm Height
- DNase/RNase Free
- "Common Wall" design allows the highest possible volume to be used while maintaining an overall height of 45mm
- Cylindrical well with round bottom optimizes mixing and recovery
- "V" Bottom allows total liquid removal
- Can be stored at 80°C
- 50 plates per case – packaged in sealed sleeves of 5 plates



For more information and to see the entire selection of **labForce** plates and sealing caps, please visit thomassci.com Keyword: **1159Q90**

BINDER

Best conditions for your success



Avantgarde.Line Series

FD and ED Drying/Heating Chambers

BD Incubators

FD Drying and Heating Chambers with Forced Convection

- Temperature range: ambient temperature plus 10°C to 300°C
- High temperature accuracy thanks to APT.line™ technology
 - Controller with LCD display
 - Electromechanical control of the exhaust air flap
 - 2 chrome-plated racks
 - Units up to 115L are stackable
 - Class 2 independent temperature safety device (DIN 12880) with visual temperature alarm
 - Ergonomic handle design
 - USB port for recording data

**Thomas Nos. 1181L31; 1181L32;
1184M72; 1181L33; 1182L89; 1181L34**

ED Drying and Heating Chambers with Gravity Convection

- Temperature range: ambient temperature plus 5°C to 300°C
- High temperature accuracy thanks to APT.line™ technology
- Controller with LCD display
- Electromechanical control of the exhaust air flap
- 2 chrome-plated racks
- Units up to 115L are stackable
- Class 2 independent temperature safety device (DIN 12880) with visual temperature alarm
- Ergonomic handle design
- USB port for recording data

**Thomas Nos. 1184M74; 1180Q85; 1184M75;
1180Q86; 1180Q87; 1180Q88**

**QUICK
SHIP!**
Available

BD Incubators with Gravity Convection

- Temperature range: ambient temperature plus 5°C to 300°C
- High temperature accuracy thanks to APT.line™ technology
- Controller with LCD display
- Electromechanical control of the exhaust air flap
- Inner door made of tempered safety glass 2 chrome-plated racks
- Units up to 115L are stackable
- Class 3.1 independent temperature safety device (DIN 12880) with visual temperature alarm
- Ergonomic handle design
- USB port for recording data

**Thomas Nos. 1180Q95; 1180Q96; 1184M73;
1180Q97; 1180Q98; 1180Q99**

For more information on **FD/ED Drying/Heating Chambers and BD Incubators**, please visit **thomassci.com**

labForce
powered by **Thomas Scientific**

Ultra-High-Speed 15mL & 50mL Polypropylene Centrifuge Tubes

labForce Ultra-High-Speed 15mL & 50mL Centrifuge Tubes

have been designed for high speed centrifugation and meet the demands of the most crucial scientific work. Produced using premium grade USP Class VI resins in an automated, touch free manufacturing process that provides both ultimate performance and cost savings to users.

Features and Benefits:

- Ultra-High Performance
- Certified for ScienceSM
- Value
- Premium Materials
- Leak Resistant
- Ease of Use
- Eco Friendly



Thomas No.	Description	Qty/Case
1163X42	Centrifuge Tube, High Performance, 15mL, Red Screw Cap, Assembled, PP, Printed Graduations, STERILE, 25/Bag, 20 Bags/Unit	500
1163X43	Centrifuge Tube, High Performance, 15mL, Red Screw Cap, Assembled, PP, Printed Graduations, STERILE, 25/Rack, 20 Racks/Unit	500
1163X44	Centrifuge Tube, High Performance, 50mL, Red Screw Cap, Assembled, PP, Printed Graduations, STERILE, 25/Bag, 20 Bags/Unit	500
1163X45	Centrifuge Tube, High Performance, 50mL, Red Screw Cap, Assembled, PP, Printed Graduations, STERILE, 25/Rack, 20 Racks/Unit	500

The Original Lab Mill

The Wiley Mill, by Thomas Scientific, sets the standard of quality, efficiency, and value within the sample preparation market. With over 75 years of proven technology, Wiley Mills are the **most robust, longest lasting mills on the market!**

The Wiley Mill is **built by hand** and consists of an **all steel construction**, with four rotating steel cutting knives, easy cleaning, **no service tech required for maintenance** and a one year manufacturer's warranty. The mills are suggested by the U.S. Bureau of Plant Industry for milling of samples.

Whatever your application, Thomas has a Mill for you!

- Bio-fuel
- Agriculture
- Tobacco
- Meat & Poultry
- Biology
- Life Science
- Pet Food



Thomas Scientific

**Model 4
Wiley® Mill**

Models for Bench Mounting

- Official Methods of Analysis AOAC 922
- Moving parts are totally enclosed
- 2 1/4" diameter sample input
- 50 to 1,000 gram sample volume
- All steel construction

NEW & Improved! The Thomas Model 4 Wiley® Mill is ideal for the sample preparation of solid biofuels according to EN 14780.

Thomas No.	Description
1188Y47	Wiley® Mill, Model 4 Bench, 1 Hp, 115V, 50/60 Hz
1188Y48	Wiley® Mill, Model 4 Bench, 1 Hp, 2330V, 50/60 Hz
1188Y51	Wiley® Mill, Model 4 Floor, 1 Hp, 230V, 50/60 Hz
1188Y52	Floor Stand with Casters

Models with Floor Stand

- Heavy channel stock steel construction
- Smooth rolling casters
- Accessory shelf

Floor stand models include jar and beaker chutes, three sieves (1/2, 1 and 2 mm), one stainless steel beaker (1527C25), three 1 pint (0.47 L) glass jars (6176B12), and set of wrenches.

**For more information about
Thomas Wiley Mills
contact your Thomas Scientific
Sales Representative today!**

Want a FREE Sample Grinding? Visit www.thomassci.com/wileymill



Frontier™ 5000 Series High-Speed Microliter Centrifuges

*Smooth and Dependable High-Speed
Microliter Centrifuge for Life Science
Separation Applications*

Frontier microliter benchtop centrifuges provide high-speed operation for spin-down applications requiring a wide variety of tube volumes and capacities.

Features

- LCD, Backlight, 2 lines
- AC Power (Included)
- Brushless quiet motor, small footprint
- High sample throughput, multi-safety control, personal program function

For more information about the Frontier™ 5000 Series, please visit thomassci.com



Thomas No.	Description
1158W01	Centrifuge, Micro, Model FC5515, 120V
1158W00	Centrifuge, Micro, Model FC5515, 230V
1158W03	Centrifuge, Micro, Model FC5515R, 120V
1158W02	Centrifuge, Micro, Model FC5515R, 230V



Quality-built
Innovation-driven
Laboratory-inspired
Customer-focused
Since 1963



PolyScience®
Temperature Control Solutions

circulating baths • water baths
chillers • application-specific baths

CORNING



The world's fastest and most accurate cell counter

The choice between manual and automated cell counting has long been a difficult one. Manual cell counting is accurate but often time-consuming and subject to user error. Automated cell counting is faster and less user-dependent, but disposable slide consumables can be expensive. *Finally, there is a solution.*

The new **Corning® Cell Counter** is the first automated cell counter that combines the best of both worlds.

It is:

- **Fast** – due to cloud-based image processing
- **Accurate** – due to its machine learning algorithm
- **Low-cost** – no consumables required

Other Advantages

Easy to use – To begin a count, simply place a loaded counting chamber on the stage and press start.

Convenient data retrieval – The cell count report is instantly shown on your computer.

It is also sent to a secure cloud server, enabling you to access the analyzed image and cell count on a smartphone, tablet, or computer.

Request a Demo

If you are interested in learning more about the new **Corning Cell Counter**, please contact your Thomas Scientific Rep.



Visit thomassci.com and search Keyword: **1159B19**

Standard Opening Screw Thread Vials, 12x32mm, 8-425mm Neck Finish and Accessories

Finneran Products Certified for Science™

8-425mm Vials

Narrow opening allows use of 8-425mm closures and septa. Vials are designed to work in a variety of autosamplers requiring narrow neck vials. Choose from clear or amber Type I borosilicate glass.

Thomas No.	Description	Case
2695D01	2mL Clear Vial, 12x32mm, 8-425mm Screw Thread	1000
2695D07	2mL Amber Vial, 12x32mm, 8-425mm Screw Thread	1000
2695D25	2mL Clear Vial, with White Graduation Spot, 12x32mm, 8-425mm Thread	1000
2695D55	2mL Amber Vial with White Graduation Spot, 12x32mm, 8-425mm Thread	1000

Designed to work in Perkin Elmer equipment

Thomas No.	Description	Case
1188P56	2mL Clear Vial, 12x30mm, 8-425mm Screw Thread	1000
1188P57	2mL Amber Vial, 12x30mm, 8-425mm Screw Thread	1000

Finneran Interlocked™ Vials

The Finneran Interlocked™ Vial is composed of a 12x32mm glass vial and a clear glass limited volume insert fused together. This design eliminates movement of the insert, allows more consistent sample recovery, eliminates needle damage and concerns about contaminants around the fused seam/space between the neck of the vial and the insert.

Thomas No.	Description	Case
1203M14	100uL Clear Interlocked™ Vial/Insert	100
1203M15	100uL Amber Interlocked™ Vial/Insert	100

Finneran Glastic Vial Inserts

J. G. Finneran is the original designer and manufacturer of the Glass Insert/Plastic Vial (Glastic). The Finneran Glastic Vial is a unique combination of Type I low extractable borosilicate glass insert and clear or amber thermoplastic polymer outer vial shell. The glass is the only contact between the sample and the seal.

Thomas No.	Description	Case
2695D85	100uL Glass/Clear Plastic Limited Volume Vial	100
2695D87	100uL Glass/Amber Plastic Limited Volume Vial	100

Finneran Polypropylene Vials – 8-425mm

Finneran polypropylene vials are light-weight, economical and have good chemical resistance. The limited volume vials provides maximum retrieval of contents.

Thomas No.	Description	Case
2695D91	100uL Polypropylene Vial	1000
1203M07	100uL Glass/Amber Plastic Limited Volume Vial	1000
1203M08	100uL TPX Vial	1000
1156P05	1.5mL Polypropylene Vial	1000

8-425mm Screw Thread Closures

Finneran manufactures a wide variety of closures and septa for our 8-425mm vials. For a complete list of closures, please visit the Thomas Scientific website or contact your Thomas Scientific sales representative.

Thomas No.	Description	Case
2694D19	Blue, Polypropylene Large Open Hole Cap	1000
2694D07	Black, Polypropylene Large Open Hole Cap, Flangeless	1000
2694D55	Top Seal™ Closure, White Polypropylene, Molded 10mil septa	1000
2694D43	Solid Top, Black Polypropylene, PTFE/F217 Lined	1000

Preassembled Screw Thread Open Hole Closures and Septa – 8-425mm

Thomas No.	Description	Case
1203X40	Black Closure, Red PTFE/Silicon Septa, with Slit	1000
2694D07	Black Closure, Red PTFE/Silicone Septa	1000

Top Hat™ Septa and Closures

The patented Top Hat™ septa and closure is designed to provide a positive physical lock.

Thomas No.	Description	Case
1186N51	Blue Top Hat™ PTFE/Silicone Septa/Closure – Patented	1000
2694E52	Yellow Top Hat™ PTFE/Silicone Septa/Closure – Patented	1000

Conical Glass Inserts – Precision-Formed Mandrel Interior

Limited volume – Inserts are available preassembled with a polymer bottom spring or patented Top Spring™. The spring acts as a shock absorber protecting against breakage if the needle bottoms out. The conical design allows complete sample removal.

Thomas No.	Description	Case
2697J07	50uL Glass Insert with Bottom Spring	100
2697J22	100uL Glass Insert with Plastic Flange	100
2697J34	100uL Glass Insert with Flange	100
2697J13	100uL Glass Insert, No Spring	100
2697J19	100uL Glass Insert with Bottom Spring	100
2697J16	200uL Glass Insert, No Spring	100
2697J40	150uL Glass Insert with Bottom Spring	100

Conical Glass Inserts – Pulled Point Interior

Thomas No.	Description	Case
1190X61	200uL Glass Conical Limited Volume Insert, No Spring	100

Conical Polypropylene Inserts – Precision Formed Interior

Thomas No.	Description	Case
1169H82	100uL Clear Polypropylene Insert, No Spring	1000
2697J25	100uL Polypropylene Insert, No Spring	1000
2697J28	100uL Polypropylene Insert with Bottom Spring	1000

Flat Bottom Glass and Polypropylene Inserts

Thomas No.	Description	Case
2697J49	250uL Glass Flat Bottom Insert	1000
1203M65	250uL Glass Flat Bottom Insert with ID Ring	1000
1203M66	250uL Polypropylene Flat Bottom Insert	1000

Finneran Stackable Vial Rack

- 50 Position – 5-wells deep x 10 wells wide
- Stackable
- Polypropylene
- Easy to clean
- Use with 12x32mm vials and tubes
- Alphanumeric indexing
- Autoclavable

Thomas No.	Description	Case
1159M21	50 Position Blue Polypropylene Stackable Rack	5
1159M22	50 Position Black Polypropylene Stackable Rack	5
1159M23	50 Position White Polypropylene Stackable Rack	5



For a complete listing of **JG Finneran** vials, inserts, septa and closures...

please visit thomassci.com
Keyword: **Finneran**

J.G. Finneran
Associates, Inc.



Forget our freeze dryers. Please.



Think of our FreeZone® with end point detection as the time you don't have. Its smart design automatically notifies you when lyophilization is complete. No need to wait around the lab. New freedom to do other very important things.

Learn more at thomassci.com Search: FreeZone

LABCONCO®



labForce
powered by Thomas Scientific

NEW!

BALANCES



TS-B Series

Basic Portable Weighing

Economical weighing
Educational & general laboratory use

TS-E Series

Economy Weighing

Economy level balances / Basic weighing needs

TS-L & TS-L.C Series

Standard Weighing

Highly precise measurement

TS-L.N Series

Standard Weighing
with NTEP Certification

TS-P Series

Portable Weighing

Educational and light industrial use

TS-T Series

Advanced Technology

Advanced weighing performance
Maximum ease-of-operation

TS-U Series

Ultra-microbalances & microbalances

Professional level of weighing
Highest measurement accuracy

Please visit thomassci.com Keywords: **labForce Balances**

Thomas
BRAND

TraceableLIVE™

WiFi Datalogging Thermometers

Features

- Monitor remotely humidity and temperature—connect to existing WiFi
- Alerts: humidity alarm, connectivity interruption, low battery
- Cloud-based data interface—no local software required; web, Android, Apple iOS data visibility



Supplied with

1 Ambient Sensor, Quick Start Guide, batteries, magnets, Velcro, wall mount, and Traceable® Certificate.

Please visit thomassci.com Keywords: **TraceableLIVE**

Excursion-Trac™

Traceable® Datalogging Thermometers

Features

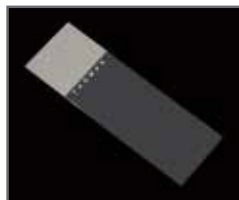
- Datalogging thermometer with user-defined time intervals
- Stores up to 10 unique alarm events
- Meets current CDC requirements for vaccine storage and monitoring
- Rolling memory structure, maintains most recent 525,600 temperature observations
- Memory can be cleared on unit after downloading data to USB stick



Please visit thomassci.com Keywords: **Traceable**

Thomas[®] PREMIUM White Glass microscope slides

- Pre-cleaned and ready to use
- Produced from finest quality optical glass
- Chemically etched frosting
- Packed in high-quality white plastic boxes
- Dimensions: 25 x 75mm
- Thickness: 1mm
- Packaging: 72/plastic box, 20 boxes/case (10/gross)



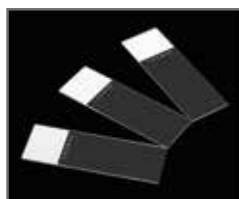
White Glass Frosted Microscope Slides

Thomas No.	Description	Qty Box	Qty Case
1169W07	Microscope Slide, Glass, Frost, 25 x 75mm	72	1440



White Glass Microscope Slides

Thomas No.	Description	Qty Box	Qty Case
1169W06	Microscope Slide, Glass, Plain, 25 x 75mm	72	1440



White Glass Color Frosted Microscope Slides

Thomas No.	Description	Qty Box	Qty Case
1169W08	Microscope Slide, Glass, White Frost, 25 x 75mm	72	1440

For information about **Thomas Scientific White Glass slides**, please visit **thomassci.com** Keyword: Thomas White Glass

Thomas[®]
B R A N D

Thomas[®] PREMIUM White Glass microscope slides

Thomas[®] Microscope Cover Glass

Our Thomas[®] microscope cover glass is packaged: 1 oz per pack, 10 packs/box (10 oz). Each fliptop pack contains a desiccant and is wrapped in aluminum to prevent sticking.

Available in two thicknesses:

- No. 1: 0.14mm
- No. 1.5: 0.175mm

Thomas No.	Description	Qty Pk	Qty Case
1169W09	Cover Glass, 22 x 22mm, No. 1	1 oz	10 oz
1169W10	Cover Glass, 22 x 22mm, No. 1.5	1 oz	10 oz
1169W11	Cover Glass, 24 x 50mm, No. 1	1 oz	10 oz
1169W12	Cover Glass, 24 x 60mm, No. 1	1 oz	10 oz



Thomas[®]
B R A N D

NEW BENCHTOP EQUIPMENT

labForce
powered by Thomas Scientific



Variable Speed Mini Orbitron™ Nutating Mixer

Provides gentle continuous mixing of specimens in a variety of blood tubes, centrifuge tubes, glass vials or plates.

Thomas No. 1165U03



Orbital Shaker

Optimal for mixing bottles, flasks and beakers due to the smooth horizontal motion.

Thomas Nos. 1165U07; 1165U08



Tube Rotator with Carousel

labForce's Laboratory Tube Rotator is ideal for Biochemistry, Molecular Biology and Clinical applications. Provides gentle or vigorous mixing. Supplied with a carousel for 14 x 50mL tubes.

Thomas No. 1165U04



Microplate Shaker

Reliable, regulated shaking for two microplates.

Thomas No. 1165U09



Mini Tube Rotator

Small footprint for your bench – we know you need all the space you can get! Ideal for Molecular Biology, Histochemistry and Clinical applications.

Thomas No. 1165U05



Tap Dancer Mini Tube Vortex Mixer

Compact, with low profile and small footprint. Pressure sensitive cup and continuous or touch operation.

Thomas No. 1165U06



Orbitron V 3D Orbital Shakers

Variable speed, 3D motion provides gentle or vigorous mixing.

Thomas No. 1165U11

For more information on NEW Benchtop Equipment from labForce, please visit thomassci.com

Are you taking advantage of all that Thomas Scientific has to offer?

Thomas Scientific offers our customers many ways to save. In addition to our competitive pricing, customers can take advantage of special offers through *LabBUYER*, *Lab BASICS*, *Safety Spotlight*, *Equipment and Instrumentation Source Guide*, and more.

The **Equipment and Instrumentation Source Guide** is full of deals and solutions for your laboratory needs. Get the latest information on new products as well as helpful tips to save you time and money.

The **LabBasics** winter publication is full of your everyday lab essentials at great prices.

The **Brewery and Wine Brochure** is focused around top quality products for this growing industry.

The **Safety Spotlight** is focused around our Safety partners and the many offerings of Safety products available to you. Here you will find new products, as well as some items that anyone who cares about Safety should have in their work environment. Discounts and great deals on Safety products await you.

The **Thomas Scientific Forensics Catalog**, along with the current Supplement, is packed with products focussed on the Forensics industry.

Ask your local Thomas Sales Representative for copies of these and other publications we have available. Many publications can also be downloaded on our website, in our Deal Central section. Visit the Promotions & Literature tab on ThomasSci.com today to see the latest publications and promotions.

Interested in seeing weekly specials and new product announcements? Check out our email blasts that feature unique product specials, many of which are exclusive to Thomas Scientific. To receive our email blasts on a regular basis, please register on our website!

So ask yourself . . . Am I taking advantage of all that Thomas Scientific has to offer?



thomassci.com
800.345.2100
RepSupport@thomassci.com

Thomas Scientific, LLC Family of Companies

