

## GPRIN1 Polyclonal Antibody

Catalog number: 13771-1-AP

Size: 50 µg/150 µl

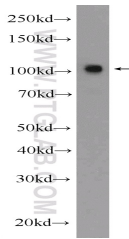
Source: Rabbit

Isotype: IgG

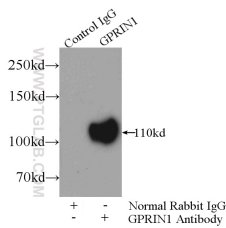
Synonyms:

GPRIN1; GPRIN1, GRIN1,

KIAA1893



mouse brain tissue were subjected to SDS PAGE followed by western blot with 13771-1-AP( GRIN1 Antibody) at dilution of 1:600



IP Result of anti-GRIN1 (IP:13771-1-AP, 3µg; Detection:13771-1-AP 1:500) with mouse brain tissue lysate 3600µg.

### Background

GPRIN1 (G protein-regulated inducer of neurite outgrowth 1), also named GRIN1, may be involved in neurite outgrowth. Western blotting analysis has confirmed its expression in mouse neuroblastoma and rat pheochromocytoma cells. And both GPRIN1 and GNAO1 are membrane-bound proteins that are enriched in the growth cones of neurites (PMID:10480904). It has 2 isoforms produced by alternative splicing. This antibody detects GRIN1 at bands around 110 kDa.

### Applications

Tested applications:	ELISA, IP, WB
Cited applications:	WB
Species specificity:	Human, Mouse; other species not tested.
Cited species:	Mouse, rat
Calculated GPRIN1 MW:	1008aa,102 kDa
Observed GPRIN1 MW:	100-110 kDa
Positive WB detected in	Mouse brain tissue
Positive IP detected in	Mouse brain tissue
Recommended dilution:	WB: 1:200-1:2000 IP: 1:200-1:2000

Application key: WB = Western blotting, IHC = Immunohistochemistry, IF = Immunofluorescence, IP = Immunoprecipitation

### Immunogen information

Immunogen:	Ag4754
GenBank accession number:	BC052950
Gene ID (NCBI):	114787
Full name:	G protein regulated inducer of neurite outgrowth 1

### Product information

Purification method:	Antigen affinity purification
Storage:	PBS with 0.02% sodium azide and 50% glycerol pH 7.3. Store at -20°C.