

ThomasSci.com

Summer 2020

LAB BUYER

GENERAL LAB EDITION

AUTOMATION SECTION
starting on page 9

Thomas
Scientific

WELCOME!

Thomas Scientific is a distributor of laboratory supplies, equipment and chemicals. The products in this catalog represent only a small offering from our extensive catalog and website. We're here to make your purchasing process as simple as possible. For additional models, sizes, packaging, and accessories not shown in our catalogs or if you just need help selecting a product, contact us at 800-345-2100 or visit us on the web at www.thomassci.com.



Thomas Scientific accepts VISA, Master Card, American Express and the IMPAC card for government buyers.

POs accepted for registered accounts.

OUR MISSION

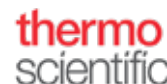
To help science create a better world by providing quality products with personal, timely and efficient service

Delivering Quality Scientific Supplies Worldwide Since 1900

Special offers and pricing are valid through September 30, 2020, unless otherwise noted.

NOTE: Offers in this catalog are void where prohibited by law or company policy. Shipping charges are not included. Prices and offers are subject to change without notice and are not to be combined with other offers/discounts or contract pricing. Valid in USA only. Dealer/reseller sales not applicable. For web orders, enter the promo code, if applicable, at time of checkout. For phone orders, please supply the promo code to the customer service representative when ordering. Discount pricing shown must be specified when placing order. Returned products will be subject to billing for Free Items at list price. Free items in 'Buy/Get 1 Free' offers will be the item of lowest value unless otherwise noted. Giveaways and free products may be shipped separately. Allow 4-6 weeks for delivery.

— BRANDS FEATURED IN THIS ISSUE —



Looking for additional offers?

Check out our

Deal Central

section on the web

www.ThomasSci.com/deals



Setting science in motion to create a better world

From breakthrough discovery to agile delivery, we offer an extensive portfolio of mission-critical products, services, and solutions. We are a trusted global partner to customers in the life sciences, advanced technologies, and applied materials industries.

Visit www.thomassci.com/avantor to learn more.





PUT OUR KARL FISCHER REAGENTS TO THE TEST

GFS Chemicals' Watermark® brand of Volumetric Karl Fischer Reagents offers a selection of one and two component materials made in the U.S. and available to ship the same day or next day.

Our Karl Fischer reagents offer:

- High water capacity – more than you will ever need
- pH buffered to ensure the fastest titrations
- 2-year shelf life
- Nearly 30 years of Karl Fischer experience

For more information, visit ThomasSci.com
Or contact your local representative.



RightCycle

By Kimberly-Clark Professional®

The RightCycle™ Program is an innovative recycling solution that helps make a "greener" lab. Use this program to divert your used Kimberly-Clark Professional nitrile gloves, apparel items, and safety glasses from the landfill and have them converted into new consumer goods like flower pots and plastic shelving units.

Get started today!

<https://www.thomassci.com/rightcycle>

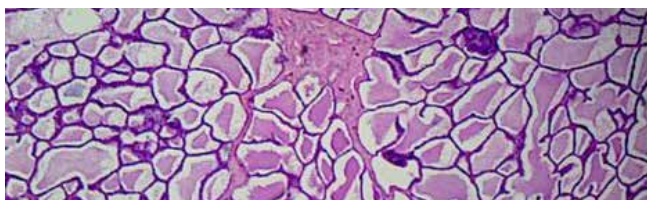
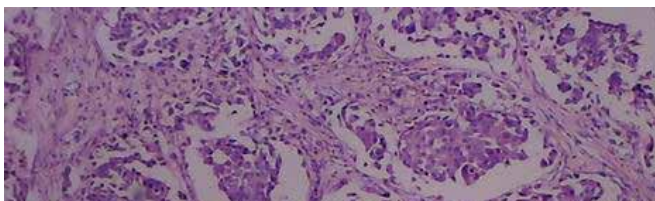


PREPARED SLIDES

Save **10%**
on GSC Slides!

Use Promo Code **"0120"** at
Checkout to Receive your
Special Pricing

We carry a vast selection of prepared
microscope slides. They can be closely
investigated under a microscope to
explore botany, fungi, histology, monera,
pathology, protists, and zoology.



See ThomasSci.com/Deals
for a list of eligible products

Promotion expires December 31, 2020

UVP GelSolo

Simplified Gel Documentation



UVP GelSolo Imaging System

Designed to acquire gel images easily
and without any need for training

- All-in-one design for streamlined gel documentation
- High resolution 5.0 MP camera
- Large 11.6" touch screen with user-friendly software
- Epi-white and epi-blue LED lights enable a variety of gel imaging applications

Save 20% now through the end of the year

Thomas No.	Manufacturer No.	Regular List	NEW List
1145H94	849-97-0940-01	\$9552.50	\$7773.13
1145H90	849-97-0938-01	\$8942.50	\$7277.00
1145H86	849-97-0936-01	\$8942.50	\$7277.00

analytikjena
An Endress+Hauser Company

labForce
powered by Thomas Scientific

NEW Pipettes & Motorized Pipette Controllers

*An Economical
Solution Made for
Ultimate Function*

Visit ThomasSci.com Keyword **labForce**

Sure Stock Program provides quick access to your lab's cold storage needs

*Thermo Fisher Scientific's Sure Stock program
has built stock to "guarantee" quick shipment
in 5 days or less.*

Program rules:

- Orders must be for three or less items on the Sure Stock list
- Thermo orders must only include Sure Stock eligible items
- Units must be "standard"
- No packages, no accessories

Eligible items include ULTS as well as several refrigerators

thermo
scientific

Order today from the Sure Stock program and be assured of shipment in 5 days or less.

Visit ThomasSci.com Search **SureStock** for more information and a list of eligible products!



NOW AVAILABLE!



Agilent Technologies

*Thomas Scientific is now
an authorized distributor
of Agilent Chemistries
and Supplies Products!*

- | Chemical standards
- | Chromatography supplies
- | Spectroscopy supplies
- | Sample preparation materials
- | Vials, well plates, and more

Visit ThomasSci.com/Agilent
to learn more.



Get a **FREE pH meter** when you purchase:

- ✓ a TS-T Analytical Balance **AND** a TS-T Toploader Balance **OR**
- ✓ a TS-L.C Analytical Balance **AND** a TS-L.C Toploader Balance **OR**
- ✓ a TS-L Analytical Balance **AND** a TS-L Toploader Balance



labForce
powered by Thomas Scientific



FREE pH Meter!

Visit
ThomasSci.com/deals
for more details

Hamilton Microlab® 600 Diluters & Dispensers

Sample Prep Perfected

Increase Accuracy, Efficiency & Speed

- ▶ Reduce sample preparation times
- ▶ Increase throughput and reduce errors
- ▶ Eliminate user-to-user variation
- ▶ Simplify compliance
- ▶ Free up valuable laboratory resources



Lightweight hand probe
A lightweight, disposable tip hand probe is available



Thomas No.	Mfr. No.	Description
1220B14	ML610-DIS	Microlab® 600 Single Syringe Dispenser with Basic Controller
1221W13	ML620-DIS	Microlab® 600 Single Syringe Dispenser with Advanced Controller
1221W11	ML615-DIS	Microlab® 600 Dual Syringe Dispenser with Basic Controller
1221W15	ML625-DIS	Microlab® 600 Dual Syringe Dispenser with Advanced Controller
1221W12	ML615-CNT	Microlab® 600 Dual Syringe Continuous Dispenser with Basic Controller
1221W16	ML625-CNT	Microlab® 600 Dual Syringe Continuous Dispenser with Advanced Controller
1221W10	ML615-DIL	Microlab® 600 Dual Syringe Diluter with Basic Controller
1221W14	ML625-DIL	Microlab® 600 Dual Syringe Diluter with Advanced Controller
1221W18	61500-02	Microlab® 600 Basic to Advanced Controller Upgrade Kit Includes: Advanced Manual, 2 GB SD Card, SD to USB Converter, and the Programmer Software CD
1221W19	61500-03	Microlab® 600 Custom Programmer Kit (compatible with .Net 2.0) Includes: Programmer Software CD which contains the Programmer Manual, Application Programming Interface, and Example LabView, C#, and VB Programs
1216P36	61500-04	Microlab® 600 Printer Kit

For more information, visit www.thomassci.com/Equipment/Dispensers/_/Microlab-600-Dispensers-and-Diluters

1-800-345-2100

www.thomassci.com

©2015 Hamilton Company. All rights reserved. All trademarks are owned and/or registered by Hamilton Company in the U.S. and/or other countries.

HAMILTON 

AUTOMATION SECTION

**Get your Assay on
Target with Greiner
Bio-One Microplates**


greiner
BIO-ONE



Buy 3 Cases, Get 1 Case FREE!

For redemption information and to view
eligible products, visit [ThomasSci.com/deals](https://www.thomasci.com/deals)

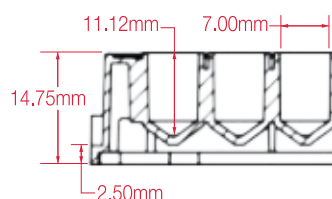
*B3G1 Promotion
expires 9/30/20*

FREE SILICONE SEALING MATS

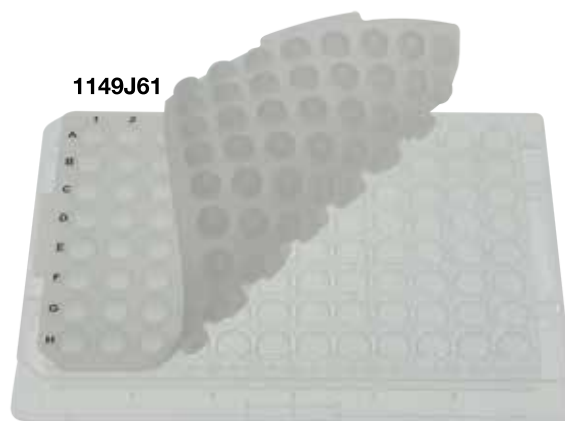
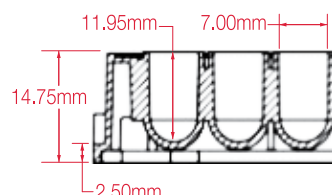
Get 10 mats free with each case of ILP assay/storage plates purchased.*



1149L20



1149K80



1149J61

*Offer applies to Plates 1149L20 and 1149K80 and Mat 1149J61.

Visit [ThomasSci.com/deals](https://www.thomasci.com/deals)
to learn more and to
download redemption form.



**Innovative
Laboratory
Products**

Visit [ThomasSci.com/ILP](https://www.thomasci.com/ILP) for our huge selection of Multi-Well Plates, Sealing Mats & Films, Reservoirs and PCR Consumables!





10%
DISCOUNT
on USA made
plates and mats

No promotion code required.
Promotion expires 10/31/20

Designed to make the interchange of plates simpler in automated systems. V bottom allows total liquid removal, partial collection and aids in re-suspension. Conical base aids sample concentration, reconstitution and centrifugation. The raised well rims help improve heat sealing. No inner edges allows for better collection of magnetic beads. All are DNase/RNase free.

96-Well Deep Round – Raised Rim – 1mL

- Rimmed version eliminates cross contamination and allows for a better seal
- Non-Rimmed version to allow insertion of vials
- Manufactured from pre-tested polypropylene for low extractables
- Alphanumeric grid-referencing
- Cylindrical well with round bottom for optimal mixing and recovery
- Can be stored at -80°C
- 42mm height
- Available sterile

96-Well Deep Round – Raised Rim – 1mL

- Raised well rims to improve heat sealing
- Conical base helps in sample concentration, reconstitution and centrifugation
- Made from virgin polypropylene
- V Bottom to allow total liquid removal, partial collection and to aid re-suspension

96-Well Deep Round – Raised Rim – 1mL *Continued*

- No inner edges to allow better collection of magnetic beads
- 44mm height
- Available sterile

96-Well Deep Round – Common Wall - 2mL

- “Common Wall” design allows the highest possible volume to be used while maintaining an overall height of just 45mm
- Manufactured from pre-tested polypropylene for low extractables
- Cylindrical well with round bottom for optimal mixing and recovery
- V Bottom to allow total liquid removal, partial collection and to aid re-suspension
- 45mm height
- Can be stored at -80°C

Visit [ThomasSci.com/deals](https://www.thomasci.com/deals) to learn more.

CoolBox™

Ice-Free Cooling and Freezing Systems



CoolBox systems are benchtop cooling workstations that provide sample cooling or freezing *without ice, electricity or batteries!* CoolBox systems are versatile and can accommodate a variety of sample formats and temperatures. The modular design enables the use of CoolRack® and CoolSink® thermo-conductive sample modules to hold microfuge tubes, cryogenic vials, PCR tubes and plates, assay plates and more. The internal cooling or freezing cartridges provide hours of 0.5 to 4°C cooling or sample freezing. CoolBox systems may also be used with dry ice to create a compact, portable, snap-freezing workstation for bacteria, virus and proteins.



Samples directly in ice

Non-reproducible method. Insulating air pockets create non-uniform temperatures. Unorganized and at risk of contamination.



CoolRack® module on ice

Reproducible method. Alloy rapidly adapts to ice temperature and holds all samples at the same temperature. No direct ice contact.

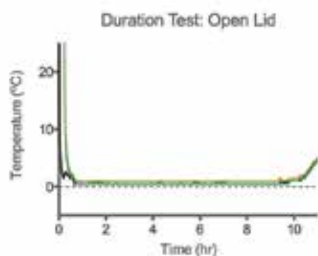


Ice-free CoolBox™ XT workstation

Reproducible method. Uniform and consistent sample temperature up to 16 hours with re-usable cooling core. No ice, no batteries, no electricity.

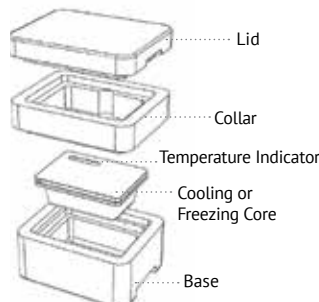
Holds Plates	●	●	●	●
0 - 4°C cooling with lid closed	16 hours	10 hours	10 hours	n/a
0 - 4°C cooling with lid open	10 hours	5 hours	4 hours	4 hours
<0°C freezing with lid open	5 hours		3 hours	

CoolBox Performance



CoolBox XT workstation performance with XT Cooling Core. Samples stay cold for over 10 hours with lid open and over 16 hours with lid closed.

How It Works



Each CoolBox system consists of a base, cooling cartridge/core and a lid. CoolBox XT workstations also include a magnetized collar and a 1 to 8°C temperature indicator for visual assurance of proper temperature. Each CoolBox is designed to receive thermo-conductive sample modules that sit directly on the cartridge/core keeping samples at desired temperature for hours. The cartridge/core is pre-frozen in a -20°C freezer.

Learn more at ThomasSci.com Keywords **1200U96** and **1200R72**



Are you taking advantage of all that Thomas Scientific has to offer?

Thomas Scientific offers our customers many ways to save. In addition to our competitive pricing, customers can take advantage of special offers through *LabBUYER*, *Equipment and Instrumentation Source Guide*, and more.

The **Equipment and Instrumentation Source Guide** is full of deals and solutions for your laboratory needs. Get the latest information on new products as well as helpful tips to save you time and money.

The **Brewery and Wine Brochure** is focused around top quality products for this growing industry.

The **New Lab Resource Guide**, everything you need to get your new lab started today. We're here to help you!

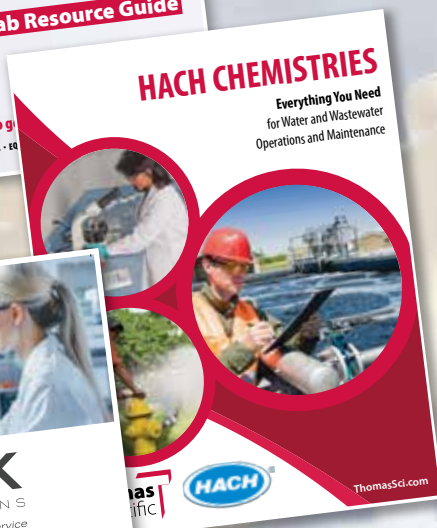
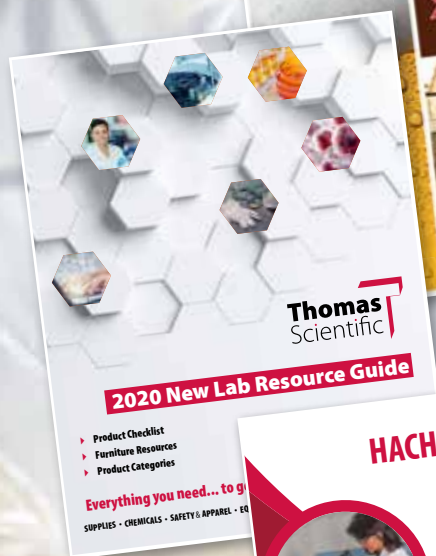
The **Education Quarterly**, to help science create a better world by providing quality products with personal, timely and efficient service.

We offer **Industry Specific Brochures** to support the various needs of our customers.

Ask your local Thomas Sales Representative for copies of these and other publications we have available. Many publications can also be downloaded on our website, in our Deal Central section. Visit the Promotions & Literature tab on ThomasSci.com today to see the latest publications and promotions.

Interested in seeing weekly specials and new product announcements? Check out our email blasts that feature unique product specials, many of which are exclusive to Thomas Scientific. To receive our email blasts on a regular basis, please register on our website!

So ask yourself ... **Am I taking advantage of all that Thomas Scientific has to offer?**



Connect With Us:



ThomasSci.com 800.345.2100

