

ESR2 Polyclonal Antibody

Catalog number: 14007-1-AP

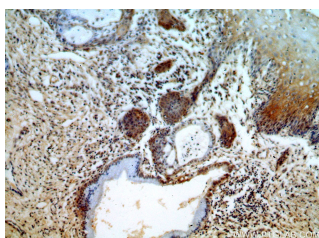
Size: 21 µg/150 µl

Source: Rabbit

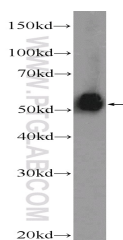
Isotype: IgG

Synonyms:

ESR2; ER BETA, Erb, ESR BETA, ESR2, ESRB, ESTRB, estrogen receptor 2 (ER beta), Estrogen receptor beta, NR3A2



Immunohistochemical of paraffin-embedded human cervix using 14007-1-AP (ESR2 antibody) at dilution of 1:50 (under 10x lens)



NIH/3T3 cells were subjected to SDS PAGE followed by western blot with 14007-1-AP (ESR2 Antibody) at dilution of 1:2000

Background

Estrogen receptor-beta (ESR2) is a member of the superfamily of nuclear receptors, which can transduce extracellular signals into transcriptional responses. It binds estrogens with an affinity similar to that of ESR1, and activates expression of reporter genes containing estrogen response elements (ERE) in an estrogen-dependent manner. DNA-binding by ESR1 and ESR2 is rapidly lost at 37 degrees Celsius in the absence of ligand while in the presence of 17 beta-estradiol and 4-hydroxy-tamoxifen loss in DNA-binding at elevated temperature is more gradual

Applications

Tested applications:	ELISA, IHC, WB
Cited applications:	IHC, WB
Species specificity:	Human, Mouse, Rat; other species not tested.
Cited species:	Human, mouse
Calculated ESR2 MW:	59 kDa
Observed ESR2 MW:	50 kDa
Positive WB detected in	NIH/3T3 cells, human brain tissue, mouse brain tissue, mouse testis tissue, PC-3 cells, SH-SY5Y cells
Positive IHC detected in	Human cervix tissue, human ovary tumor tissue
Recommended dilution:	WB: 1:1000-1:10000 IHC: 1:20-1:200

Application key: WB = Western blotting, IHC = Immunohistochemistry, IF = Immunofluorescence, IP = Immunoprecipitation

Immunogen information

Immunogen:	Ag5103
GenBank accession number:	BC024181
Gene ID (NCBI):	2100
Full name:	Estrogen receptor 2 (ER beta)

Product information

Purification method:	Antigen affinity purification
Storage:	PBS with 0.02% sodium azide and 50% glycerol pH 7.3. Store at -20°C.