

Thomas
Scientific



*Top Quality
Products For The*
BEER & WINE
Industries



Table of Contents

Supplies

Microscope Slides and Cover Glass	Page 2
Cotton-Tipped Applicators	Page 2
Tape	Page 2
Storage Bottles	Pages 2-4
Extraction Thimbles	Page 4
Sampling Ladle and Tubes	Page 4
Flasks	Pages 4, 5
Trigger Sprayer	Page 5
Cleaning Compound	Page 5
Funnels	Page 5
Pipets	Pages 5, 6
Pipette Controller	Page 6
Barrier Tips	Page 6
Petri Dishes	Page 6
Filter Monitor	Page 6
Wipers	Page 6
Culture and Microcentrifuge Tubes	Pages 6, 7
Beakers and Cylinders	Page 7
Cuvettes	Page 7
Sampling Vials	Page 7
pH Test Strips	Page 7
Sampling Swabs	Page 8
Clean Trace™ ATP Test Devices	Page 8
Gluten Protein Rapid Kit	Page 8
Sealing Film	Page 8
4-Channel Timer	Page 8
Traceable Thermometers	Pages 8, 9
Total Acidity Brewing Kit	Page 9
Syringe Filters and Filter Papers	Pages 9, 10
Filter Holder	Page 10
Bitterness Brewing Kit	Page 10

Equipment & Instruments

Hot Plates, Stirrers and Magnetic Stirrers	Page 11
Digital Dri-Block Heaters	Page 11
Inserts	Page 11
Mixers	Page 11
SAS Microbial Air Samplers	Page 12
Probes and Electrodes	Page 12
Portable pH, Conductivity, Dissolved Oxygen (DO), ORP and ISE Multi-Parameter Meters	Pages 12, 13
Spectrophotometers	Page 14
Titration	Page 15
Turbidimeters	Page 15
Bioclave	Page 15
TNTplus Vial Test	Page 15
Reagent Sets and Tests	Pages 15, 16
Refractometers	Page 16
Centrifuges	Page 5
Automated Cell Counter	Page 5
Balances	Pages 16, 17
Hydrometers	Page 17
Liquid-in-Glass Thermometer	Page 18
Adjustable Volume Pipettors	Page 18
Benchtop Multi-Parameter, Density, pH, Conductivity, Dissolved Oxygen, ORP and ISE Meters	Pages 18, 19
Meter Pens	Page 19
Application Software	Page 19
pH Buffers	Page 20
Electrode Solution	Page 20
MEL/MPN Total Coliform and E.coli Laboratory	Page 20
Peracetic Acid Kit	Page 20
HybriScan™ D Beer	Page 20
BrewLab™ Test Kit	Page 20
Heracell VIOS CO ₂ Incubators	Page 21

PCR

Rapid Yeast DNA Extraction Kit	Page 22
illustra ExoProStar	Page 22
illustra PCR Beads	Page 22
illustra PCR NAP Columns	Page 22
myGel™ Electrophoresis System	Page 22
myTaq™ HS Mix	Page 22
myTaq™ Red Mix	Page 22
myTaq™ Pant-PCR Kit	Page 22

Safety

Lab Coats	Page 23
Shoe Covers	Page 23
Facemasks	Page 23
Bouffant Caps	Page 23
Beard Covers	Page 23
Coveralls	Page 24
Frocks	Page 24
Vertical Drench Shower	Page 24
Storage Cabinets	Page 24
Spill Kits	Page 24
First Aid Kit Laboratory	Page 25
Lab Soakers	Page 25
Cleanroom Wipers	Page 25
Ear Plugs	Page 25
Nitrile Gloves	Pages 25, 26
Danger, Graphic Signs	Page 26
Safety Glasses	Page 26
Floor Matting	Page 26

Furniture

Chairs	Page 27
Stem Caster Carts	Page 27
Cleanroom Tables	Page 27

Chemicals

Hardy Diagnostics

Microbiological Media	Page 28
-----------------------------	---------

RICCA Chemical Company

Stains & Dyes	Page 28
Reagents	Page 28
pH Buffers	Page 29
Acidity Testing	Page 29

MilliporeSigma

Standards, Acids, Antibiotics	Page 29
-------------------------------------	---------

HIMEDIA

Microbiological Media	Page 29
Agar Media	Page 29
Liquid Media	Page 29
Coliforms	Page 29
Lactobacilli/Yeasts	Page 30

MilliporeSigma

For Yeast Growing - Beer	Page 30
Solvents	Page 30
Standards	Page 30

SpectroPure

Standards	Page 30
-----------------	---------

SUPPLIES

Thomas® White Glass Plain Microscope Slides

Our Thomas® microscope slides are pre-cleaned and ready to use.

- Produced from the finest quality optical white glass
- Packed in high-quality white plastic boxes
- Dimensions: 25 x 75 mm
- Thickness: 1 mm
- Thomas® White Glass frosted microscope slides are color coded on one end, one side

Thomas No.	Description	Qty./Box
1169W06	Microscope Slide, Glass, Plain, 25 x 75 mm	72/BX, 1440/CS
1169W07	Microscope Slide, Glass, Frost, 25 x 75 mm	72/BX, 1440/CS
1169W08	Microscope Slide, Glass, White Frost, 25 x 75 mm	72/BX, 1440/CS

Globe Scientific Ground Edge Microscope Slides

- 25 x 75 x 1 mm
- 90° ground edges
- 90° corners
- Pre-cleaned
- Frosted Slides: frosted on 1 end, 1 side

Thomas No.	Description	Qty./Uom
1192L95	Microscope Slides, Glass, 25 x 75 mm, 90° Ground Edges, Plain	144/PK
1192L97	Microscope Slides, Glass, 25 x 75 mm, 90° Ground Edges, Frosted, 1 End, 1 Side	144/PK, 3600/CS

Thomas® Microscope Cover Glass

Our Thomas® microscope cover glass is packaged: 1 oz per pack, 10 packs/box (10 oz). Each flip top pack contains a desiccant and is wrapped in aluminum to prevent sticking. Available in two thicknesses:

- No. 1: 0.14 mm
- No. 1.5: 0.175 mm

Pack and Case:

- 1/Pk = 1 ounce
- 10/Cs = 10 ounces

Thomas No.	Description	Qty./Uom
1169W09	Cover Glass, 22 x 22 mm, No. 1, 1 oz.	1/PK, 10/CS
1169W10	Cover Glass, 22 x 22 mm, No. 1.5, 1 oz.	1/PK, 10/CS
1169W11	Cover Glass, 24 x 50 mm, No. 1, 1 oz.	1/PK, 10/CS
1169W12	L-Shaped Cell Spreader, Polypropylene, Sterile	1/PK, 10/CS

Puritan Medical Cotton-Tipped Wooden Applicators

Most popular general purpose applicator, all purpose swab for industrial, use in patient care for wound care, general cleaning

- Tip Material: Cotton
- Handle Material: Wood
- Standard applicators used in everything from basic patient care to crime scene investigation
- Absorbent cotton tipped applicator is produced with High Quality USP grade cotton

Thomas No.	Description	Qty./Uom
1132D10	Applicator, non-sterile	1000/BX, 10000/CS
1215C51	Cotton-Tipped Wooden Applicators, Sterile	1000/CS
1215C52	Cotton Tip, Wood Shaft, 2 Swabs per Transport Tube, Sterile	500/BX
1132H05	2pk Applicator, sterile	100/BX



3M

Comply™ Lead Free Steam Indicator Tape

- Versatile tape adheres to all types of wraps
- Allows you to write on tapes or use preprinted 3M labels for ease of use and better record keeping
- Tape stretches to minimize tape pop-off which reduces need for resterilization due to packs opening during processing
- Low cost per use offers economical way to monitor exposure to the sterilization process

Indicator tapes are Class 1 process indicators used for exposure monitoring which assures the operator handling the processed items that the pack has been exposed to the sterilization process without the need to open the pack or check load control records.

Thomas No.	Description	Qty./Uom
1217A25	Comply™ Lead Free Steam Indicator Tape, 0.47 inch x 60 yards (12 mm x 55 m)	1/EA, 42/CS
1217A26	Comply™ Lead Free Steam Indicator Tape, 0.70 inch x 60 yards (18 mm x 55 m)	1/EA, 28/CS
1217A27	Comply™ Lead Free Steam Indicator Tape, 0.94 inch x 60 yards (24 mm x 55 m)	1/EA, 20/CS



Bel-Art Products Scienceware® Write-On™ Label Tape

Adheres to any clean surface, including Teflon® fluoropolymer resin coated materials, and peels off without leaving a sticky residue. Pencil, ball-point pen or solvent ink marker remain legible under the most demanding laboratory conditions.

- Colored paper with rubber resin adhesive resists moisture and most solvents
- Withstands a maximum temperature of 157°C (315°F) for 30 minutes or 80°C (176°F) for 24 hours; can be used down to -80°C (-112°F)
- Excellent for use with Write-On™ Multi-Roll Label Tape Dispensers
- Available in 6 vivid colors

Thomas No.	Description	Qty./Uom
1207G87	Tape Label Write-On White 1/2" x 40 yd	6/PK

*See web for additional sizes and colors



Corning PET Storage Bottle

- Packaged in two convenient, shrink-wrapped trays within an outer bag to assure cleanliness
- Sterilized to 10-6 SAL and certified nonpyrogenic
- Molded graduations for accurate measurements
- Leakproof, tamper-evident 31.7 mm HDPE screw cap
- Available in four sizes: 125 mL, 250 mL, 500 mL and 1L
- USP class VI compliant bottles are validated noncytotoxic and nonhemolytic

New polyethylene terephthalate (PET) bottles are ideal for storage and sampling of media, biologicals and other aqueous solutions. The PET resin makes the bottle lightweight, break resistant and as transparent as glass.

Thomas No.	Description	Qty./Uom
1218C62	Corning® PET Storage Bottle for Pharmaceutical and Life Science Research, 31.7 mm HDPE Tamper Proof Screw Cap, Sterile, Clear, 125 mL	48/CS
1218C63	Corning® PET Storage Bottle for Pharmaceutical and Life Science Research, 31.7 mm HDPE Tamper Proof Screw Cap, Sterile, Clear, 250 mL	48/CS
1218C64	Corning® PET Storage Bottle for Pharmaceutical and Life Science Research, 31.7 mm HDPE Tamper Proof Screw Cap, Sterile, Clear, 500 mL	24/CS
1218C65	Corning® PET Storage Bottle for Pharmaceutical and Life Science Research, 31.7 mm HDPE Tamper Proof Screw Cap, Sterile, Clear, 500 mL	24/CS



Bel-Art Products Wide-Mouth Wash Bottles

Low-density polyethylene wide-mouth wash bottles with wide mouths for easy filling. Use colored polypropylene caps for quick, at a glance identification of contents.

Thomas No.	Description	Qty./Uom
1226B79	Wash Bottle, Wide-Mouth with Red Cap, 1,000 mL	4/PK
1226B80	Wash Bottle, Wide-Mouth with Yellow Cap, 1,000 mL	4/PK
1226B81	Wash Bottle, Wide-Mouth with Blue Cap, 1,000 mL	4/PK
1226B82	Wash Bottle, Wide-Mouth with Green Cap, 1,000 mL	4/PK



Corning

PYREX® Media Storage Bottles

- Heavy-duty media bottle can be used for storage as well as mixing and sampling
- Includes linerless, one-piece autoclavable polypropylene plug seal cap with drip free pouring rings
- Optional red PBT caps and red ETFE pouring rings are available for dry heat sterilization (180°C)



Thomas No.	Description	Qty./Uom
1743E15	Pyrex Media Storage Bottles, 250 mL	10/CS
1743E20	Pyrex Media Storage Bottles, 500 mL	10/CS
1743E25	Pyrex Media Storage Bottles, 1,000 mL	10/CS
1743E30	Pyrex Media Storage Bottles, 2,000 mL	10/CS

*See web for additional sizes

Thermo Scientific Nalgene PETG Square Media Bottles

- Nalgene 2019 series
- Maximum use temperature to 70°C (150°F)
- Bottles provide reduced permeability to CO₂/O₂ to minimize outgassing and pH shifts; especially suited for media storage
- Transparent, radiation-sterilized, non-cytotoxic and non-pyrogenic
- Permanent molded-in graduations
- White, HDPE closures
- Leakproof



Shrink-wrap band assures product integrity. Packed in shrink-wrapped trays for easy storage and handling. Sterile 10⁻⁶ SAL.

Thomas No.	Description	Qty./Uom
1720N25	Narrow Mouth Square Bottle Sterile PETG, 30 mL	96/CS
1720N26	Narrow Mouth Square Bottle Sterile PETG, 60 mL	96/CS
1720N27	Narrow Mouth Square Bottle Sterile PETG, 125 mL	48/CS
1720N28	Narrow Mouth Square Bottle Sterile PETG, 250 mL	48/CS
1720N29	Narrow Mouth Square Bottle Sterile PETG, 500 mL	24/CS
1720N35	Narrow Mouth Square Bottle Sterile PETG, 1,000 mL	24/CS
1720N36	Narrow Mouth Square Bottle Sterile PETG, 2,000 mL	12/CS

labForce (a Thomas Scientific Brand) PP Wide Mouth Laboratory Bottles

- Free of heavy metals and RoHS compliant
- Manufactured from USP Class VI resin that is FDA -21CFR compliant for food contact
- Precision molded for consistent wall thickness and smooth interior and exterior surfaces
- Safe, break resistant alternative to glass bottles
- PP has improved chemical resistance and clarity
- Leakproof closure with integrated seal ring
- Autoclavable and approved for use from -40 to 121°C
- Manufacturing Facility is ISO 13485 and ISO 9001 Certified

labForce Polypropylene (PP) Wide Mouth Laboratory Bottles meet the requirements and expectations of the most exacting users.

Thomas No.	Description	Qty./Uom
1155L56	Bottle, Wide Mouth, Round, PP with PP Closure, 30 mL	12/PK, 72/CS
1155L57	Bottle, Wide Mouth, Round, PP with PP Closure, 30 mL (Bulk Packed with Bottles and Caps Bagged Separately)	12/PK, 72/CS
1155L58	Bottle, Wide Mouth, Round, PP with PP Closure, 60 mL	12/PK, 72/CS
1155L59	Bottle, Wide Mouth, Round, PP with PP Closure, 125 mL	12/PK, 72/CS
1155L60	Bottle, Wide Mouth, Round, PP with PP Closure, 250 mL	12/PK, 72/CS
1155L61	Bottle, Wide Mouth, Round, PP with PP Closure, 500 mL	12/PK, 72/CS
1155L62	Bottle, Wide Mouth, Round, PP with PP Closure, 1000 mL	12/PK, 72/CS
1155L63	Bottle, Wide Mouth, Round, PP with PP Closure, 1000 mL (Bulk Packed with Bottles and Caps Bagged Separately)	12/PK, 72/CS
1155L64	Bottle, Wide Mouth, Round, PP with PP Closure, 2 L	12/PK, 72/CS
1155L65	Bottle, Wide Mouth with Handle, Round, PP with PP Closure, 4L	12/PK, 72/CS
1155L66	Bottle, Wide Mouth with Handle, Square, PP with PP Closure, 4L	12/PK, 72/CS



labForce (a Thomas Scientific Brand)

HDPE Wide Mouth Laboratory Bottles

- Free of heavy metals and RoHS compliant
- Manufactured from USP Class VI resin that is FDA -21CFR compliant for food contact
- Leakproof closure with integrated seal ring
- HDPE is safe for freezer storage down to -100°C
- Safe, break resistant alternative to glass bottles
- Cap and bottle designed with semi-buttress threads for better performance than round threads
- Plastic laboratory bottles are lighter than glass for improved handling and reduced shipping costs



labForce High Density Polyethylene (HDPE) Wide Mouth Laboratory Bottles meet the requirements and expectations of the most exacting users.

Thomas No.	Description	Qty./Uom
1155L44	Bottle, Wide Mouth Round, HDPE with PP Closure, 30 mL	12/PK, 72/CS
1155L45	Bottle, Wide Mouth Round, HDPE with PP Closure, 60 mL	12/PK, 72/CS
1155L46	Bottle, Wide Mouth Round, HDPE with PP Closure, 125 mL	12/PK, 72/CS
1155L44	Bottle, Wide Mouth Round, HDPE with PP Closure, 250 mL	12/PK, 72/CS
1155L45	Bottle, Wide Mouth Round, HDPE with PP Closure, 500 mL	12/PK, 72/CS
1155L46	Bottle, Wide Mouth Round, HDPE with PP Closure, 500 mL (Bulk Packed)	12/PK, 72/CS
1155L44	Bottle, Wide Mouth Round, HDPE with PP Closure, 500 mL (Bulk Packed with Bottles and Caps Bagged Separately)	12/PK, 72/CS
1155L45	Bottle, Wide Mouth Round, HDPE with PP Closure, 1000 mL	12/PK, 72/CS
1155L46	Bottle, Wide Mouth Round, HDPE with PP Closure, 1000 mL (Bulk Packed with Bottles and Caps Bagged Separately)	12/PK, 72/CS
1155L44	Bottle, Wide Mouth Round, HDPE with PP Closure, 2 L	12/PK, 72/CS
1155L45	Bottle, Wide Mouth with Handle, Round, HDPE with PP Closure, 4 L	12/PK, 72/CS
1155L46	Bottle, Wide Mouth with Handle, Square, HDPE with PP Closure, 4 L	12/PK, 72/CS

labForce (a Thomas Scientific Brand)

HDPE Narrow Mouth Laboratory Bottles

- Free of heavy metals and RoHS compliant
- Manufactured from USP Class VI resin that is FDA -21CFR compliant for food contact
- Linerless caps reduce contamination risks associated with liners: wrinkles, tears, wear, corrode, react, leak
- BPA and Phthalate free
- Cap and bottle designed with semi-buttress threads for better performance than round threads
- Safe, break resistant alternative to glass bottles



labForce High Density Polyethylene (HDPE) Narrow Mouth Laboratory Bottles meet the requirements and expectations of the most exacting users.

Thomas No.	Description	Qty./Uom
1155L31	Bottle, Narrow Mouth Boston Round, HDPE with PP Closure, 8 mL	12/PK, 72/CS
1155L32	Bottle, Narrow Mouth Boston Round, HDPE with PP Closure, 30 mL	12/PK, 72/CS
1155L33	Bottle, Narrow Mouth Boston Round, HDPE with PP Closure, 60 mL	12/PK, 72/CS
1155L34	Bottle, Narrow Mouth Boston Round, HDPE with PP Closure, 125 mL	12/PK, 72/CS
1155L35	Bottle, Narrow Mouth Boston Round, HDPE with PP Closure, 125 mL	12/PK, 72/CS
1155L36	Bottle, Narrow Mouth Boston Round, HDPE with PP Closure, 250 mL	12/PK, 72/CS
1155L37	Bottle, Narrow Mouth Boston Round, HDPE with PP Closure, 250 mL (Bulk Packed)	12/PK, 72/CS
1155L38	Bottle, Narrow Mouth Boston Round, HDPE with PP Closure, 500 mL	12/PK, 72/CS
1155L39	Bottle, Narrow Mouth Boston Round, HDPE with PP Closure, 500 mL (Bulk Packed with Bottles and Caps Bagged Separately)	12/PK, 72/CS
1155L40	Bottle, Narrow Mouth Boston Round, HDPE with PP Closure, 500 mL (Bulk Packed)	12/PK, 72/CS
1155L41	Bottle, Narrow Mouth Boston Round, HDPE with PP Closure, 1000 mL	12/PK, 72/CS
1155L42	Bottle, Narrow Mouth Boston Round, HDPE with PP Closure, 1000 mL (Bulk Packed with Bottles and Caps Bagged Separately)	12/PK, 72/CS
1155L43	Bottle, Narrow Mouth Boston Round, HDPE with PP Closure, 1000 mL (Bulk Packed)	12/PK, 72/CS

Thermo Scientific Nalgene Wide Mouth Economy HDPE Bottles

- Polypropylene screw closure

Lightweight economy version of the original Nalgene bottle. Suitable for short-term general purpose laboratory and field applications such as collecting samples and containing working solutions like buffers, bench reagents and chemical aliquots.

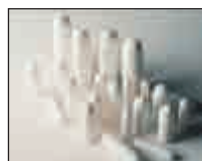
Note: The Nalgene Lab Quality bottle is not recommended for hazardous and critical material containment.



Thomas No.	Description	Qty./Uom
1223H36	Bottle Wide Mouth HDPE, 30 mL	72/CS
1223H37	Bottle Wide Mouth HDPE, 60 mL	72/CS
1223H38	Bottle Wide Mouth HDPE, 125 mL	72/CS
1223H39	Bottle Wide Mouth HDPE, 250 mL	72/CS
1223H40	Bottle Wide Mouth HDPE, 50 mL	48/CS
1223H41	Bottle Wide Mouth HDPE, 1,000 mL	24/CS

GE Healthcare Extraction Thimbles

GE's Whatman cellulose thimbles are manufactured from high-quality alpha cellulose cotton linter for high-performance use in automated Soxhlet extractor systems. Used in air and waste gas analysis.



- Used in a wide variety of solid-liquid extraction studies, including lipid and pesticide analyses in food and soil samples
- Suitable for temperatures up to 120°C (248°F)
- Excellent mechanical strength and retention
- Double thickness for added rigidity
- Wall thickness of standard thimbles is 1–1.5 mm to support application need

Used in a wide variety of solid-liquid extraction studies, including lipid and pesticide analyses in food and soil samples. Suitable for temperatures up to 120°C (248°F). Excellent mechanical strength and retention. Double thickness for added rigidity. Wall thickness of standard thimbles is 1–1.5 mm to support application. GE's Whatman cellulose thimbles are manufactured from high-quality alpha cellulose cotton linter for high-performance use in automated Soxhlet extractor systems. Used in air and waste gas analysis.

Thomas No.	Description	Qty./Uom
4390L30	Cellulose Extraction Thimble, Double Thickness (2 mm wall), 33 x 94 mm	25/PK
4390L35	Cellulose Extraction Thimble, Double Thickness (2 mm wall), 43 x 123 mm	25/PK
4390G20	Cellulose Extraction Thimble, Single Thickness (1 mm wall), 19 x 90 mm	25/PK
0898Q00	Cellulose Extraction Thimble, Single Thickness (1 mm wall), 22 x 65 mm	25/PK
4390G25	Cellulose Extraction Thimble, Single Thickness (1 mm wall), 22 x 80 mm	25/PK
0898X27	Cellulose Extraction Thimble, Single Thickness (1 mm wall), 25 x 100 mm	25/PK
4390G35	Cellulose Extraction Thimble, Single Thickness (1 mm wall), 25 x 80 mm	25/PK
4390G30	Cellulose Extraction Thimble, Single Thickness (1 mm wall), 26 x 60 mm	25/PK
0898P96	Cellulose Extraction Thimble, Single Thickness (1 mm wall), 30 x 100 mm	25/PK
0898P97	Cellulose Extraction Thimble, Single Thickness (1 mm wall), 30 x 80 mm	25/PK

*See web for additional sizes

Sampling Systems SteriWare® Ladle

- LiquiDip Mono - Single valve at the base of the sampler. Ideal for cross sectional sampling
- LiquiDip Duo = Valve at both top and bottom to give extra control when sampling. Ideal for both cross sectional and point sampling
- Made from FDA acceptable polymers

The LiquiDip is a fast efficient disposable liquid sampler. It is a self-closing liquid sampler that offers both cross sectional and point sampling.



Thomas No.	Description	Qty./Uom
1163Z20	SteriWare Ladle, Non-Sterile, Clear, HDPE, Individually Bagged	40/CS
1163Z21	SteriWare Ladle, Sterile, Clear, HDPE, Individually Bagged	40/CS
1163Z22	SteriWare Ladle, Non-Sterile, Blue, PP, Individually Bagged	40/CS
1163Z23	SteriWare Ladle, Sterile, Blue, PP, Individually Bagged	40/CS

Bürkle DispoDipper Disposable Sampling Tubes

- PP, blue transparent
- Individually wrapped and optionally sterilised by gamma rays



Thomas No.	Description	Qty./Uom
1158W64	DispoDipper LaboPlast, PP, blue transparent, 50 mL	20/PK
1158W65	DispoDipper SteriPlast, PP, blue transparent, 50 mL	20/PK

Bürkle DispoTube Disposable Samplers

With single-use DispoSamplers:

- Work processes need not be interrupted
- Cross contamination is eliminated



Unlike conventional reusable samplers, these single-use products do not need to be cleaned after use, thereby saving time and money.

Thomas No.	Description	Qty./Uom
1181L94	DispoTube Liquid Sampler, 500 mm, 100 mL, Individually Wrapped, Non-Sterile	20/PK
1181L95	DispoTube Liquid Sampler, 500 mm, 100 mL, Individually Wrapped, Sterile	20/PK
1181L96	DispoTube Liquid Sampler, 1000 mm, 200 mL, Individually Wrapped, Non-Sterile	20/PK
1181L95	DispoTube Liquid Sampler, 1000 mm, 200 mL, Individually Wrapped, Sterile	20/PK

Thermo Scientific Nalgene Disposable Erlenmeyer Flasks

- Vented closure
- Sterile



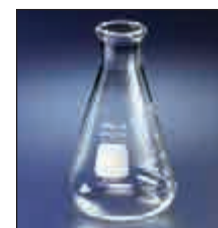
Designed for shaker and suspension cell culture, media preparation or storage, these sterile disposable Erlenmeyer flasks cut the chance of cross contamination. Flasks are made of lightweight clear PETG with molded-in graduations that allows sterile air exchange. Capacities range from 125 to 2000 mL.

Thomas No.	Description	Qty./Uom
1233M04	Erlenmeyer Flask, Baffled, 125 mL	24/CS
1233M05	Erlenmeyer Flask, Baffled, 250 mL	12/CS
1233M06	Erlenmeyer Flask, Baffled, 500 mL	12/CS
1233M07	Erlenmeyer Flask, Baffled, 1,000 mL	6/CS
1233M08	Erlenmeyer Flask, Baffled, 2,000 mL	4/CS
1232G41	Erlenmeyer Flask, Baffled, 2,800 mL	4/CS

Corning PYREX® Heavy-Duty Graduated Erlenmeyer Flasks

- Heavy-duty rim for longer service
- Narrow mouth
- Graduated scale indicates approximate volume

The Erlenmeyer design is extremely popular and has been modified for numerous lab applications.



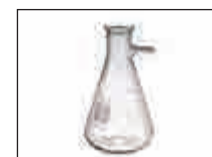
Thomas No.	Description	Qty./Uom
4903G53	Flask, Erlenmeyer, Heavy Duty, 500 mL	6/PK, 36/CS
4903G65	Flask, Erlenmeyer, Heavy Duty, 1,000 mL	6/PK, 24/CS
4903G68	Flask, Erlenmeyer, Heavy Duty, 1,500 mL	1/CS
4903G76	Flask, Erlenmeyer, Heavy Duty, 2,000 mL	1/EA, 8/CS
4903G88	Flask, Erlenmeyer, Heavy Duty, 4,000 mL	1/EA, 4/CS
4903G94	Flask, Erlenmeyer, Heavy Duty, 6,000 mL	1/EA, 4/CS

*See web for additional sizes

Corning PYREX Vacuum Filter Flask

For use in vacuum filtration applications

- Withstands full vacuum (to 30" Hg)
- With hose barb for 1/4" I.D. tubing



Thomas No.	Description	Qty./Uom
4948H41	Flask, Filter 1000 mL	6/PK, 12/CS
4948H46	Flask, Filter 2000 mL	1/EA, 12/CS
4948H29	Flask, Filter 250 mL	6/PK, 18/CS
4948H52	Flask, Filter 4000 mL	1/EA, 6/CS
4948H35	Flask, Filter 500 mL	6/PK, 18/CS

Kimble

KIMAX® Brand Volumetric Flasks With Stopper

- Calibrated "to contain", they are designed from ASTM Specification E288, Class B requirements

Sizes 10 through 50 mL, include Standard Taper 9 glass stopper; size 100 mL, Standard Taper 13; sizes 200 and 250 mL, Standard Taper 16, size 500 mL, Standard Taper 19; 1,000 mL, Standard Taper 22 and size 2,000 mL, Standard Taper 27

Thomas No.	Description	Qty./Uom
5003K20	Flask, Volumetric, Stopper, 25 mL	6/PK, 12/CS

*See web for additional sizes



Bel-Art Products

Filtering Flask with Side Arm

These flasks, also called vacuum flasks, have a side-arm with a 45° downward angle to prevent tipping.

- Reduce broken glassware with this flask constructed of FDA grade polypropylene
- Side Arm accepts flexible tubing from 3/8" to 1/2" I.D.
- 1000 mL capacity

Thomas No.	Description	Qty./Uom
0210S91	Filtering Flask with Side Arm, 1000 mL	1/EA



Bel-Art Products

Scienceware® Trigger Sprayer

Add the convenience of adjustable spray to your Scienceware® wash bottles. Trigger sprayers with adapters fit any Scienceware® bottle with an easy to fill, 53 mm wide closure and offer convenient, adjustable spray dispensing of a wide range of chemicals including bleach, ethanol, machine oil and water.

- Perfect for OSHA compliant 16 oz and 32 oz Scienceware® non-vented, wide-mouth wash bottles (series 11716 and 11732)
- Stainless steel, spring-action pump in the trigger sprayer will not corrode with repeated exposure to 10% bleach disinfecting solution
- Sprayer without adapter fits most bottles with a 28 mm opening
- Sprayer with adapter adds approx. 5.5" height to a bottle
- 53 mm wide closure offers a convenient, adjustable spray dispensing of a wide range of chemicals including bleach, ethanol, machine oil and water

Thomas No.	Description	Qty./Uom
1209R03	Trigger Sprayer with adapter	20/CS, 2/PK



Alconox

Alconox® Detergent Biodegradable Cleaning Compound

- For general laboratory use
- Suitable in ultrasonic cleaners
- Mild, odorless, non-toxic powdered wetting agent and detergent for cleaning glassware, porcelain, metal, plastic or rubber

Concentrated, anionic detergent for manual and ultrasonic cleaning. Free rinsing to give you reliable results without interfering residues. Excellent replacement for corrosive acids and hazardous solvents. USDA authorized. Dilute 1:100. pH 9.5.

Corrosion inhibited formulation recommended for glass, metal, stainless steel, porcelain, ceramic, plastic, rubber and fiberglass

Detergent removes grease, blood, tissue, etc. and is especially effective for penetrating irregular and inaccessible surfaces. Usual dilution is 1 tablespoon to 1 gallon water gives pH 9.5 solution.

Thomas No.	Description	Qty./Uom
2902G05	Alconox, 4 Lb. Bx.	9/CS

*See web for additional sizes



GVS Life Sciences

Analytical Funnels

- Ready-to-use 100 mL filtration units with removable cellulose nitrate membrane and culturing devices
- Saves up to 50% in time with no flaming and sterilization required
- Minimizes the risk of cross contamination



Thomas No.	Description	Qty./Uom
1228N06	Analytical Funnel, 0.45 mm, White / Black Grid, 47 mm, 100 mL	50/PK
1228N07	Analytical Funnel, 0.45 mm, White / Black Grid, Bagged, 47 mm, 100 mL	50/PK
1228N08	Analytical Funnel, 0.2 mm, White / Black Grid, 47 mm, 100 mL	50/PK
1228N09	Analytical Funnel, 0.45 mm, Black / White Grid, 47 mm, 100 mL	50/PK
1228N10	Analytical Funnel, 0.45 mm, Black / White Grid, Bagged, 47 mm, 100 mL	50/PK
1228N11	Analytical Funnel, 0.2 mm, White / Black Grid, Bagged, 47 mm, 100 mL	50/PK

Thermo Scientific Nalgene

Polypropylene Buchner Funnels

- Lightweight and durable
- Bottom and top can be separated for easier cleaning
- Autoclavable



Thomas No.	Description	Qty./Uom
5214Q41	Funnel Buchner PP 110 mm	6/PK, 12/CS
5214Q47	Funnel Buchner PP 150 mm	1/EA, 12/CS
5214Q23	Funnel Buchner PP 55 mm	6/PK, 18/CS
5214Q29	Funnel Buchner PP 70 mm	1/EA, 6/CS
5214Q35	Funnel Buchner PP 90 mm	6/PK, 18/CS

United Scientific Supplies

Industrial Funnels

Heavy duty polypropylene funnels include a molded in handle. Designed to provide convenient filling of carboys, drums, and barrels.



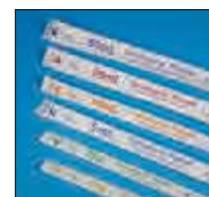
Thomas No.	Description	Qty./Uom
1188H08	Industrial Funnel, PP, 48 oz.	1/EA

*See web for additional sizes

labForce (a Thomas Scientific Brand)

Serological Pipets

- Negative graduations on all sizes and to 10 mL on 25 mL and 50 mL pipets
- Certified for ScienceSM - pipets are clean room manufactured, gamma irradiated to SAL 10⁻⁶, certified free from DNase, RNase, and Pyrogens
- Lot numbers and expiration dates conveniently printed on pipet wrappers
- Packaged in a reinforced, environmentally friendly, brown corrugated box



Thomas No.	Description	Qty./Uom
1163Y28	Serological Pipet, 10 mL, Bulk Packed, 1/10 Divisions, Orange Band, Sterile, 25/bag	500/CS
1163Y22	Serological Pipet, 10 mL, Individually Wrapped, 1/10 Divisions, Orange Band, Sterile, 50/bag	200/CS
1163Y25	Serological Pipet, 1 mL, Bulk Packed, 1/100 Divisions, Yellow Band, Sterile, 25/bag	500/CS
1163Y19	Serological Pipet, 1 mL, Individually Wrapped, 1/100 Divisions, Yellow Band, Sterile, 100/bag	500/CS
1163Y29	Serological Pipet, 25 mL, Bulk Packed, 2/10 Divisions, Red Band, Sterile, 25/bag	200/CS
1163Y23	Serological Pipet, 25 mL, Individually Wrapped, 2/10 Divisions, Red Band, Sterile, 50/bag	200/CS
1163Y26	Serological Pipet, 2 mL, Bulk Packed, 1/100 Divisions, Green Band, Sterile, 25/bag	500/CS
1163Y20	Serological Pipet, 2 mL, Individually Wrapped, 1/100 Divisions, Green Band, Sterile, 100/bag	500/CS
1163Y30	Serological Pipet, 50 mL, Bulk Packed, 5/10 Divisions, Purple Band, Sterile, 25/bag	100/CS
1163Y24	Serological Pipet, 50 mL, Individually Wrapped, 5/10 Divisions, Purple Band, Sterile, 25/bag	100/CS
1163Y27	Serological Pipet, 5 mL, Bulk Packed, 1/10 Divisions, Blue Band, Sterile, 25/bag	500/CS
1163Y21	Serological Pipet, 5 mL, Individually Wrapped, 1/10 Divisions, Blue Band, Sterile, 50/bag	200/CS

Thomas®

Transfer Pipets

- Non-toxic and chemically inert to biological fluids and most acids
- Temperature range: -196°C to 90°C

Produced from a custom grade of low-density polyethylene (LDPE), these unbreakable one-piece pipets are used to draw and dispense liquids in controlled, reproducible drop sizes.



Thomas No.	Description	Qty./Uom
1227W94	Transfer Pipette, 3 mL, Small Bulb, 0.25 mL Graduations to 1 mL, non-sterile, 500/Dispenser Box	5000/CS

Denville

Denville FASTPETTE™ Pipette Controller

- Lightweight, ergonomic
- 0.5 to 100 mL pipette range
- Large LCD display
- Autoclavable



The Denville FASTPETTE™ — Lightweight and ergonomically shaped, motorized pipette controller designed for work with glass or plastic serological pipettes.

Thomas No.	Description	Qty./Uom
1159Z16	Denville FASTPETTE™ Pipette Controller	1/EA

SHARP®

SHARP® Precision Barrier Tips

- Eliminates cross-contamination filter tip
- Certified RNase/DNase, pyrogen free
- Racks are shrink wrapped and sterilized



Thomas No.	Description	Qty./Uom
1158U33	SHARP® Precision Barrier Tips, For P-100, 100 µL, 960 (10 racks of 96)	960/BX, 4800/CS
1159M41	SHARP® Precision Barrier Tips, Extra Long for P-2 and P-10, 10 µL, 960 (10 racks of 96)	960/BX, 4800/CS
1158U10	SHARP® Precision Barrier Tips, For most 250 µL and 300 µL Multichannels from Denville, BioHit, 960 (10 racks of 96)	960/BX, 4800/CS
1159M42	SHARP® Precision Barrier Tips, For P-1000 and Eppendorf 1000, 1250 µL, 576 (6 racks of 96)	576/BX, 2304/CS
1159M43	SHARP® Precision Barrier Tips, For P-20, 20 µL, 960 (10 racks of 96)	960/BX, 4800/CS
1159M40	SHARP® Precision Barrier Tips, For P-200, 200 µL, 960 (10 racks of 96)	960/BX, 4800/CS
1158U34	SHARP® Precision Barrier Tips, Standard Length for P-2 and P-10, 10 µL, 960 (10 racks of 96)	960/BX, 4800/CS

labForce (a Thomas Scientific Brand) Sterile Petri Dishes

- Optically clear
- Vented lids for air circulation
- Radiation sterilized



These Stackable Petri Dishes are ideal for general laboratory use while Slippable Petri Dishes are designed for automated filling systems.

Thomas No.	Description	Qty./Uom
1188N80	Petri Dish, 100 x 15 mm, Slippable, Sterile, 20/500	500/CS
1188N81	Petri Dish, 100 x 15 mm, Stackable, Sterile, Bulk, 25/500	500/CS
1188N83	Petri Dish, 150 x 15 mm, Slippable, Sterile, Bulk, 10/100	100/CS
1188N82	Petri Dish, 60 x 15 mm, Stackable, Sterile, 25/500	500/CS

Sartorius

Biosart 100 Monitors

- Sterile, ready-to-use disposable filter units designed to be placed directly onto a vacuum manifold
- Eliminates the cleaning and sterilization required of reusable funnels
- Each monitor includes a membrane filter and cellulose pad into the funnel unit



Thomas No.	Description	Qty./Uom
1209U90	Biosart 100 Monitors, CN, White With Black Grids, 0.45 µm, Bulk Sterile Packaged	48/PK
1209V03	Biosart 100 Monitors, CN, Gray With White Grids (Turns Black When Wet), 0.45 µm, Bulk Sterile Packaged	48/PK

*See web for additional Biosart 100 Monitor options

Kimberly Clark

KIMTECH SCIENCE® Precision Wipes Tissue Wipers

- Precision Wipes Tissue Wipers, 1-ply, are an economical choice for general low-lint cleaning tasks
- Anti-static dispensing reduces lint



Thomas No.	Description	Qty./Uom
2904F52	Precision Wipes Tissue Wipers, 4.4" x 8.4", 1 Ply	280/BX, 16800/CS
1208Q87	Precision Wipes Tissue Wipers, 14.7" x 16.6", 1 Ply	140/BX, 2100/CS
1208Q88	Precision Wipes Tissue Wipers, 14.7" x 16.6", 2 Ply	90/BX, 1350/CS

Kimberly Clark

Kimwipe® EX-L Delicate Task Wipers

- Soft and gentle on surfaces
- Absorbent
- Low-linting
- Single-ply wipers are soft, non-abrasive



Thomas No.	Description	Qty./Uom
2904F24	Kimwipes Delicate Task Wipers, White, 4.4" x 8.4"	16800/CS, 280/BX
2904F39	Kimwipes Delicate Task Wipers, White, 11.8" x 11.8"	2940/CS, 196/BX
1234Z62	Kimwipes Delicate Task Wipers, White, 14.7" x 16.6"	2100/CS, 140/BX

Corning

PYREX® VISTA Culture Tubes

Reusable PYREX rimless culture tubes offer greater convenience in plugging and rack storage. Ends are fire-polished. The 22 and 25 mm O.D. tubes do not have marking spots.



Thomas No.	Description	Qty./Uom
1233B24	PYREX® Vista Culture Tubes, RimLess, 10 mm x 75 mm	50/PK, 200/CS
1233B26	PYREX® Vista Culture Tubes, RimLess, 12 mm x 75 mm	50/PK, 200/CS
1233B28	PYREX® Vista Culture Tubes, RimLess, 13 mm x 100 mm	50/PK, 200/CS
1233B30	PYREX® Vista Culture Tubes, RimLess, 16 mm x 100 mm	50/PK, 200/CS
1233B32	PYREX® Vista Culture Tubes, RimLess, 16 mm x 125 mm	50/PK, 200/CS
1233B34	PYREX® Vista Culture Tubes, RimLess, 16 mm x 150 mm	50/PK, 200/CS
1233B36	PYREX® Vista Culture Tubes, RimLess, 18 mm x 150 mm	50/PK, 200/CS

*See web for additional sizes

Corning

PYREX® Culture Tubes with Rubber Liner Screw Caps

- Caps will withstand steam pressure sterilization at 121°C or 15 psi (100 kPa), for 20 minute periods
- Pencil marks are easily erased
- Caps are provided with a glued-in, white rubber liner



Thomas No.	Description	Qty./Uom
9212C42	PYREX® Culture Tubes, 125 x 16 mm	144/PK, 288/CS

labForce (a Thomas Scientific Brand)

Ultra-High-Speed 15 mL & 50 mL Polypropylene Centrifuge Tubes

- Ultra-High Performance
- Certified for ScienceSM
- Leak Resistant
- Eco-Friendly



Thomas No.	Description	Qty./Uom
1163X42	Centrifuge Tube, High Performance, 15 mL, Red Screw Cap, Assembled, PP, Printed Graduations, STERILE, 25/Bag, 20 Bags/Unit	500/CS
1163X43	Centrifuge Tube, High Performance, 15 mL, Red Screw Cap, Assembled, PP, Printed Graduations, STERILE, 25/Rack, 20 Racks/Unit	500/CS
1163X44	Centrifuge Tube, High Performance, 50 mL, Red Screw Cap, Assembled, PP, Printed Graduations, STERILE, 25/Bag, 20 Bags/Unit	500/CS
1163X45	Centrifuge Tube, High Performance, 50 mL, Red Screw Cap, Assembled, PP, Printed Graduations, STERILE, 25/Rack, 20 Racks/Unit	500/CS



Eppendorf Safe-Lock Microcentrifuge Tubes



Features

- Hinged Eppendorf Safe-Lock lid prevents unintentional lid opening during incubation and storage
- Polypropylene provides high resistance to chemicals, mechanical stress and temperature extremes
- Manufactured without the use of slip agents, plasticizers, and biocides – substances that have been shown to leach from plastic consumables into the sample and negatively affect bio-assay results
- g-Safe®: Exceptional centrifugation stability up to 30,000 x g prevents sample loss due to tube breakage and provides extra safety when working with hazardous samples
- Precise lid sealing for minimal evaporation rates during long-term storage
- Large frosted lid and surface on the side for easy labeling
- Guaranteed functionality from -86°C to 100°C
- Autoclavable when open (121°C, 20 min)

Thomas No.	Description	Qty./Uom
2591B75	Safe-Lock Tube, Natural, 0.5 mL	500/CS
2591B77	Safe-Lock Tube, Amber, 0.5 mL	500/CS
2591B79	Safe-Lock Tube, Blue, 0.5 mL	500/CS
2591B81	Safe-Lock Tube, Green, 0.5 mL	500/CS
2591B83	Safe-Lock Tube, Red, 0.5 mL	500/CS
2591B85	Safe-Lock Tube, Yellow, 0.5 mL	500/CS
2591D11	Safe-Lock Tube, Natural, 1.5 mL	500/CS
2591D16	Safe-Lock Tube, Amber, 1.5 mL	500/CS
2591D19	Safe-Lock Tube, Blue, 1.5 mL	500/CS
2591D23	Safe-Lock Tube, Green, 1.5 mL	500/CS

Thomas® Griffin Beakers - Polypropylene

- Polypropylene construction
- Sizes range from 50 to 5000 mL



Thomas® Low-Form Griffin Beakers have easy-to-read screened graduations plus size code, resin code, maximum use temperature and "No flame" symbol. Ribs make stacking easy.

NOTE: Beakers are not for use on hot plates.

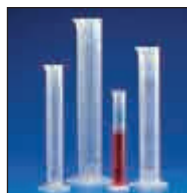
Thomas No.	Description	Qty./Uom
1224W20	Reusable Plastic Low Form Beaker, Polypropylene, 25 mL	6/PK
1224W21	Reusable Plastic Low Form Beaker, Polypropylene, 50 mL	6/PK
1224W22	Reusable Plastic Low Form Beaker, Polypropylene, 100 mL	4/PK
1224W23	Reusable Plastic Low Form Beaker, Polypropylene, 100 mL	4/PK

*See web for additional sizes

Globe Scientific Graduated Cylinder, Polypropylene, Printed Graduations

Graduated Measuring Cylinders

- Translucent polypropylene (PP)
- Blue printed graduations - mL
- Wide opening with a tapered pour spout
- Break-resistant and chemically resistant to most acids, bases and common solvents
- Continuous working environment up to 100°C
- Autoclavable at 121°C for 20 minutes
- These cylinders are ideal for safe and accurate measuring of all types of liquids
- They offer a tapered pour spout for easy pouring and filling



Thomas No.	Description	Qty./Uom
1193W12	Graduated cylinder, Polypropylene, 50 mL	1/EA
1216N86	Graduated cylinder, Polypropylene, 50 mL	30/PK

*See web for additional sizes

Globe Scientific Spectrophotometer Cuvette

These disposable standard and semi-micro cuvettes are designed for use in spectrophotometers.



- Produced from either optical polystyrene or UV grade PMMA
- Optimum transmittance through spectrum range from 340 to 800nm for the optical polystyrene and from 280-800nm for the UV Grade PMMA.
- These cuvettes are engineered for high reproducibility and offer variations within the range of $\pm 1\%$ absorption.

Cuvettes are packaged in dust-free PE foam trays. Each tray contains 100 cuvettes.

Thomas No.	Description	Qty./Uom
1202K84	Cuvette, Spectrophotometer, Square, 4.5 mL (10 mm), PS, 2 Clear Sides	1000/CS
1180W04	Cuvette, Spectrophotometer, Square, 4.5 mL (10 mm), PS, 2 Clear Sides	500/CS
1180W05	Cuvette, Spectrophotometer, Square, 4.5 mL (10 mm), PS, 4 Clear Sides	500/CS
1180W06	Cuvette, Spectrophotometer, Square, 4.5 mL (10 mm), UV Grade Methacrylate, 2 Clear Sides	1000/CS
1180W07	Cuvette, Spectrophotometer, Square, 4.5 mL (10 mm), UV Grade Methacrylate, 4 Clear Sides	500/CS
1180W08	Cuvette, Semi-Micro, 2.9 mL, with 2 Clear Sides, PS	500/CS
1180W09	Cuvette, Micro, 1.5 mL, with 2 Clear Sides, PS	500/CS
1180W10	Cuvette, Semi-Micro, 2.5 mL, with 2 Clear Sides, UV Grade Polymethylmethacrylate (P mmA)	500/CS
1180W11	Cuvette, Micro, 1.5 mL, with 2 Clear Sides, UV Grade Polymethylmethacrylate (P mmA)	500/CS

Thomas® Coliform Water Sampling Vials

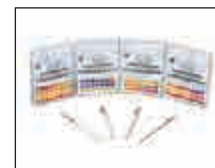
- Sterile
- Ideal when filtration or the Colilert® method is used
- Rigid vial is easier to fill than a bag - no spills
- Latching mechanism improved over competitive vials
- Will not open or leak in transit - positive thumb lock latches with an audible click
- Vials are sterile by process; locking arrow indicates an unbroken factory seal
- Superior clarity polypropylene allows use with colorimetric 73 methods



Thomas No.	Description	Qty./Uom
9853Q60	Vial, w/ Tablet	250/CS
9853Q57	Vial, Sterile	250/CS
1199Z27	Vial, w/ Tablet and Tie	200/CS

Ricca Chemical pH Test Strips

- Large indicator pad for easy matching to the color chart and precise pH determination
- Indicator dye is fixed to the test strip to reduce the risk of dye bleed into the sample
- Long sturdy handle protects the user from contact with the sample



Thomas No.	Description	Qty./Uom
1224M82	pH Test Strips, 0-14, Box/100	1/EA
1224M83	pH Test Strips, 0-6, Box/100	1/EA
1224M84	pH Test Strips, 2-9, Box/100	1/EA
1224M85	pH Test Strips, 4.5-10, Box/100	1/EA
1224M86	pH Test Strips, 7-14, Box/100	1/EA

Micro Essential Hydron Spectral 0-14 Plastic pH Strips

- Hydron (9800) Spectral 0-14 Plastic pH Strips: offer clear, bright single color matches at every 1.0 interval from pH 0.0-14.0.
- The color chart has pH matches at [0.0][1.0][2.0][3.0][4.0][5.0][6.0][7.0][8.0][9.0][10.0][11.0][12.0][13.0][14.0]



Thomas No.	Description	Qty./Uom
1211U09	Hydron (9800) Spectral 0-14 Plastic pH Strips	6/CS

*See web for additional ranges

Puritan Medical Products Environmental Sampling Swabs

Puritan's EnviroMax® and ESK® sampling kits will cover all of your sampling needs

ESK® Sampling Kit

- Choose from four standard media options or call us to discuss custom configuration

EnviroMax® (Dry) and EnviroMax Plus® (Pre-Moistened)

- This part of our environmental line includes larger swabs — you can specify a dry swab kit or one with a pre-moistened swab. These are an excellent choice for sample collection on larger surfaces

Thomas No.	Description	Qty./Uom
1216P32	Environmental Sample Kit Sterile BPW, 4 mL	50/CS
1216P20	Environmental Sample Kit Sterile BS, 4 mL	50/CS
1216P24	Environmental Sample Kit Sterile LB, 4 mL	50/CS
1216P28	Environmental Sample Kit Sterile NB, 4 mL	50/CS

*See web for additional swabs

3M Food Safety Clean-Trace™ Water - Free ATP

3M™ Clean-Trace™ Water-Free ATP AQF100 is a single-use test device that contains sample collection rings for the collection of an aqueous sample.

- Simple to use and ideal for busy production environments
- Rapid results allow immediate corrective action
- Provides an objective indication of cleanliness in water samples in seconds
- Flexibility to store the product at room temperature for up to 1 month or refrigerated for up to 12 months

Thomas No.	Description	Qty./Uom
1185X29	Clean-Trace Water - Free ATP	100/PK

3M Food Safety Clean-Trace™ Water Plus - Total ATP

3M™ Clean-Trace™ Water Plus - Total ATP AQT200 is designed to rapidly assess equipment sanitation processes and the efficiency of Clean in Place (CIP) procedures.

- Simple to use and ideal for busy production environments
- Rapid results allow immediate corrective action
- Flexibility to store the product at room temperature for up to 2 months or refrigerated for up to 12 months

Thomas No.	Description	Qty./Uom
1185X30	Clean-Trace Water Plus-Total ATP	100/PK

3M Food Safety Clean-Trace™ Surface ATP

Real-time ATP surface hygiene test which gives an objective indication of cleanliness in seconds.

- With its unique liquid stable enzyme, the test offers superior levels of repeatability
- Its performance and its incredible simplicity means customers throughout the world have put Clean-Trace™ at the heart of their hygiene monitoring programs

Thomas No.	Description	Qty./Uom
1186V51	Clean-Trace Surface ATP	100/PK

3M Food Safety Clean-Trace™ Surface Protein (Allergen) Test Swab

- Detects as little as 3 µg of protein on surfaces and in hard to reach areas
- Provides a tool to help assess and improve hygienic performance
- Visual reading of a color change indicates the level of cleanliness
- With the unique swab-click-read format and easy-to-read color change technology, this simple method of checking for removal of protein residues after cleaning

Thomas No.	Description	Qty./Uom
1185X37	Clean-Trace Surface Protein (Allergen)	60/CS



3M Food Safety 3M™ Gluten Protein Rapid Kit

The 3M™ Gluten Protein Rapid Kit is intended for screening for the presence of cashew proteins in clean-in-place (CIP) final rinse water, environmental swab samples, food ingredients and processed food products.

- Results visible at 11 ± 1 minute after application of the sample
- Rapid, qualitative immunochromatographic lateral flow test cartridges designed for the detection of allergenic food proteins
- Designed to detect both processed and unprocessed allergen protein
- Test can accommodate environmental swab, CIP rinse water, and food samples
- Limit of Detection: 5.0 ppm

Thomas No.	Description	Qty./Uom
1155N08	Gluten Protein Rapid Kit, 25 tests/kit	1/EA



Heathrow Parafilm® Sealing Film

Colorless, moisture-proof film molds to surface

Stretch film tight to seal beakers, flasks, tubes, and Petri dishes. Order a dispenser separately (Thomas Nos. 1222J96/J97/J98).

Thomas No.	Description	Qty./Uom
1222J99	Parafilm® 4"x125 ft (100 mm x 38 m)	1/EA
1222K00	Parafilm® 2"x250 ft (50 mm x 75 m)	1/EA
1222K01	Parafilm® 4"x250 ft (100 mm x 75 m)	1/EA
1216H89	Parafilm® Dispenser - Acrylic	1/EA



Thomas® 4-Channel Alarm Timer

- Easy on the eyes
- High-decibel alarm
- NIST Traceable® certificate
- Four channels
- Perfect for repetitive testing
- Accuracy is 0.01%
- Set any time from 99 hours, 59 minutes and 59 seconds, to one second
- Utilize all four channels at once in any combination to count down or up (stopwatch)
- At the touch of a button, the memory returns the display to the previously programmed countdown time
- Extra loud alarm sounds for one minute or may be silenced manually
- Magnetic back, flip open easel for standing upright, a spring fastener for clipping and an opening for lanyard, are the options for displaying

Thomas No.	Description	Qty./Uom
9371W52	4-Channel Alarm Timer	1/EA



Thomas® Traceable® Lollipop Shock/ Waterproof Thermometer

- Ideal for indoor/outdoor use
- Minimum/maximum memory
- Temperature range is -58° to 572°F and -50° to 300°C

Traceable® Lollipop thermometers are suitable for use indoors or outdoors, in wet labs and virtually all field applications. Temperature resolution is 0.1° from -20° to 200°, otherwise 1°. Accuracy is ±0.4°C or ±1°C between 0° and 100°C. Stainless steel dimensions are 8 x 0.14 inch diameter while overall size is 10 1/4" x 1 3/4" x 1/2". Weight is 7/8 of an ounce. Thermometers are provided with an individually serial numbered Traceable® certificate from an ISO 17025 calibration laboratory accredited by A2LA.

Thomas No.	Description	Qty./Uom
1235D30	Traceable® Waterproof Thermometer ±0.4°C Accuracy	1/EA



*See web for additional Traceable® Waterproof Thermometers



Thomas®

Traceable® Refrigerator/Freezer Thermometer

Accurately measures temperature in freezers, refrigerators, incubators, water baths and heating blocks

- Enclosed "temperature buffered" sensor
- Range: -50 to 70°C (-58 to 158°F)
- Resolution: 1°C; accuracy: ±1°C
- Glycol bottle insulates sensor from rapid temperature changes
- High-impact, chemical-resistant ABS case

Thermometer includes Traceable® certificate; Velcro™ and magnetic strips for mounting thermometer and bottle sensor; and one AA battery good for one year of "always on" monitoring. Dimensions: 2.75" x 4.25" x 0.75"; weight: 4 oz.

Recommended by the New York Restaurant Association.



Thomas No.	Description	Qty./Uom
9327L12	Traceable® Refrigerator / Freezer Thermometer with Bottle Probe	1/EA

DWK Life Sciences (Kimble)

Total Acidity Brewing Kit

- ASBC Methods of Analysis is a tool that ensures quality brewing results
- Includes a laminated copy of the full method instructions, lab glassware, and components needed to complete the test

Components for the Total Acidity Test Kit:

- (3) Class A Volumetric Pipets, 50 mL
- (1) Straight Buret with PTFE Stopcock, 50 mL
- (6) Tall Form Berzelius Beakers, 200 mL
- (1) Rubber Bulb
- (1) Buret Stand with Clamp



Thomas No.	Description	Qty./Uom
1162C55	Brewing Total Acidity Test Kit	1/EA

Raise Your Glass to Science!

Find this kit & more! Developed around the American Society of Brewing Chemists (ASBC) Method for Total Acidity - each kit includes a copy of the Method.

Visit thomassci.com and search **DWK Brewing Kit**.

Kit includes:

- Class A Volumetric Pipets 50mL
- Straight Buret with PTFE Stopcock, 50mL
- Tall Form Berzelius Beakers, 200mL
- Rubber Bulb
- Buret Stand with Clamp



GE Healthcare 13 mm GD/X Syringe Filters

Designed to facilitate manual filtration of viscous samples up to 10 mL

- Wide range of filter media
- Non-sterile
- 13 mm diameter
- Whatman GD/X disposable syringe filters are for the preparation of hard-to-filter samples
- Exceptional loading capacity with fast flow rates; this prevents the build-up of back pressure typically caused by the blocking of an unprotected membrane

The syringe filters have a pigment-free polypropylene housing to eliminate sample contamination and contain a pre-filtration stack of Whatman GMF 150 (graded density) and GF/F glass microfiber media, which allows users to filter even the most difficult samples with less hand pressure.



Thomas No.	Description	Qty./Uom
1231A30	GD / X 13 Syringe Filter, 0.2 mm Polypropylene	150/PK
1231A35	GD / X 13 Syringe Filter, 0.2 mm Cellulose Acetate	150/PK
1231A07	GD / X 13 Syringe Filter, 0.2 mm Polypropylene	150/PK
1231A11	GD / X 13 Syringe Filter, 0.2 mm Nylon	150/PK
1231A25	GD / X 13 Syringe Filter, 0.2 mm Polysulphone	150/PK
1231A20	GD / X 13 Syringe Filter, 0.2 mm PTFE	150/PK
1231A14	GD / X 13 Syringe Filter, 0.2 mm PVDF	150/PK
1231A36	GD / X 13 Syringe Filter, 0.45 mm Cellulose Acetate	150/PK
1231A52	GD / X 13 Syringe Filter, 0.45 mm Glass Microfibre	150/PK
1231A08	GD / X 13 Syringe Filter, 0.45 mm Nylon	150/PK
1231A12	GD / X 13 Syringe Filter, 0.45 mm Nylon	150/PK
1231A26	GD / X 13 Syringe Filter, 0.45 mm Polysulphone	150/PK
1231A31	GD / X 13 Syringe Filter, 0.45 mm Polypropylene	150/PK
1231A21	GD / X 13 Syringe Filter, 0.45 mm PTFE	150/PK

J.G. Finneran 25 mm Syringe Filters

Finneran 25 mm Syringe Filters are available in 0.2 µm and 0.45 µm pore size.

- Autoclavable



Thomas No.	Description	Qty./Uom
1190M80	25 mm Syringe Filter, 0.2 µm Mixed Esters Cellulose, Light Yellow	100/CS
1190M81	25 mm Syringe Filter, 0.45 µm Mixed Esters Cellulose, Dark Yellow	100/CS
1190M82	25 mm Syringe Filter, 0.2 µm PVDF, Light Red	100/CS
1190M83	25 mm Syringe Filter, 0.45 µm PVDF, Dark Red	100/CS
1190M84	25 mm Syringe Filter, 0.2 µm Nylon, Light Green	100/CS
1190M85	25 mm Syringe Filter, 0.45 µm Nylon, Dark Green	100/CS
1190M86	25 mm Syringe Filter, 0.2 µm PTFE, Light Blue	100/CS
1190M87	25 mm Syringe Filter, 0.45 µm PTFE, Dark Blue	100/CS
1190M88	25 mm Syringe Filter, 0.2 µm Polypropylene, Transparent	100/CS
1190M89	25 mm Syringe Filter, 0.45 µm Polypropylene, White	100/CS
1190M90	25 mm Syringe Filter, 0.2 µm Regenerated Cellulose, Light Brown	100/CS
1190M91	25 mm Syringe Filter, 0.45 µm Regenerated Cellulose, Dark Brown	100/CS
1190M92	25 mm Syringe Filter, 0.2 µm Cellulose Acetate, Light Orange	100/CS
1190M93	25 mm Syringe Filter, 0.45 µm Cellulose Acetate, Dark Orange	100/CS
1190M94	25 mm Syringe Filter, 0.2 µm Polyethersulfone, Light Purple	100/CS
1190M95	25 mm Syringe Filter, 0.45 µm Polyethersulfone, Dark Purple	100/CS
1190M96	25 mm Syringe Filter, 1.0 µm Glass Fiber, Grey	100/CS
1190M97	25 mm Syringe Filter, 2.0 µm Glass Fiber, Grey	100/CS
1190M98	25 mm Syringe Filter, 5.0 µm Glass Fiber, Grey	100/CS

GE Healthcare Grade 597 Qualitative Filter Papers

A standard grade filter used for a wide variety of analytical routine applications in different industries like food testing (e.g., determination of fat content) or removal of carbon dioxide and turbidity from beverages (e.g., beer analysis).

- Grade 597: 4-7 µm
- Available prepleated as Grade 597 ½



Thomas No.	Description	Qty./Uom
1213Y63	Grade 597 Qualitative Filter Paper, Circle, 12.7 mm	1000/PK

*See web for additional sizes



GE Healthcare Grade 3 Filter Paper

A standard grade filter used in qualitative analytical techniques to determine and identify materials. For use in Büchner funnels.

Grade 3: 6 µm

Double the thickness of Grade 1 with still finer particle retention and excellent loading capacity; more precipitate can be held without clogging. The extra thickness gives increased wet strength and makes this grade highly suitable for use in Büchner funnels. The high absorbency is particularly valuable when the paper is used as a sample carrier.



Thomas No.	Description	Qty./Uom
4712K30	Grade 3 Filter Paper, 11.0 cm	100/PK
4712K35	Grade 3 Filter Paper, 12.5 cm	100/PK
4712K40	Grade 3 Filter Paper, 15.0 cm	100/PK
0898592	Grade 3 Filter Paper, 18.5 cm	100/PK
0898591	Grade 3 Filter Paper, 24.0 cm	100/PK
4712K25	Grade 3 Filter Paper, 9.0 cm	100/PK

GE Healthcare Grade 40 Quantitative Filter Paper

High-purity filters support accurate analysis in applications sensitive to very low levels of background contamination and in gravimetric analysis where ash content might affect weight measurements of combusted samples.



- High-purity filters contain 0.007% maximum ash content
- Medium nominal particle retention rating of 8 µm
- Medium filtration speed (Herzberg 340 s)
- Particularly useful for gravimetric analysis
- Use as a clean-up filter for solutions prior to atomic absorption (AA) spectrometry

Thomas No.	Description	Qty./Uom
4716E25	Grade 40 Quantitative Filter Paper Ashless (Ash 0.007%), circle, 110 mm	100/PK
4716E30	Grade 40 Quantitative Filter Paper Ashless (Ash 0.007%), circle, 125 mm	100/PK
4716E35	Grade 40 Quantitative Filter Paper Ashless (Ash 0.007%), circle, 150 mm	100/PK
4716E40	Grade 40 Quantitative Filter Paper Ashless (Ash 0.007%), circle, 185 mm	100/PK
0898R97	Grade 40 Quantitative Filter Paper Ashless (Ash 0.007%), circle, 240 mm	100/PK
4716E15	Grade 40 Quantitative Filter Paper Ashless (Ash 0.007%), circle, 70 mm	100/PK
4716E20	Grade 40 Quantitative Filter Paper Ashless (Ash 0.007%), circle, 90 mm	100/PK

GE Healthcare Grade 597 ½ Qualitative Filter Papers

A prepleated filter used for a wide variety of analytical routine applications in different industries like food testing (e.g., determination of fat content) or removal of carbon dioxide and turbidity from beverages (e.g., beer analysis).



- Savings in time required to quadrant-fold circles to fit conical filter funnels in repetitive or multiple analyses
- Decreased overall filtration time because of the extra surface area exposed; the normal slow down of filtration speed due to the loading of particulate is postponed
- Increased total loading capacity as more filter area is available
- Maintained flow rate due to the reduction in filter paper contact with funnel side and the self-supporting shape of the filter itself
- The prepleating does not significantly affect any of the technical data, and the same figures may be used for the flat circles
- Time-saving Whatman qualitative grades are offered in this convenient form, which gives major advantages over flat circles
- A medium fast filter paper with medium to fine particle retention

Thomas No.	Description	Qty./Uom
1213Y55	Grade 597 ½ Qualitative Filter Paper, Folded, 125 mm	100/PK
1213Y56	Grade 597 ½ Qualitative Filter Paper, Folded, 150 mm	100/PK
1213Y57	Grade 597 ½ Qualitative Filter Paper, Folded, 185 mm	100/PK

GE Healthcare Grade 2555 ½ Qualitative Filter Paper

A medium fast filter paper used for the filtration of the mash for the determination of the extract in malt and wort and for removing carbon dioxide from beer.



- Decreased overall filtration time because of the extra surface area exposed; the normal slow down of filtration speed due to the loading of particulate is postponed
- Increased total loading capacity as more filter area is available
- Maintained flow rate due to the reduction in filter paper contact with funnel side and the self-supporting shape of the filter itself
- The prepleating does not significantly affect any of the technical data, and the same figures may be used for the flat circles
- Savings in time required to quadrant-fold circles to fit conical filter funnels in repetitive or multiple analyses
- Used for the filtration of the mash for the determination of the extract in malt and wort and for removing carbon dioxide from beer

Thomas No.	Description	Qty./Uom
1213Y94	Grade 2555 ½ Qualitative Filter Paper Folded (Prepleated), 320 mm	100/PK

Thermo Scientific Nalgene Reusable Filter Holders with Receivers

Polysulfone filter funnels

- For 47 mm diameter membrane filters
- Eliminates the need for a manifold and/or breakable glass vacuum flask
- Receiver is graduated
- Particularly useful for field work
- Autoclavable



Two side-arms allow connection to vacuum line; also accepts syringe filters. Tubing adapter can be stuffed with cotton for sterile venting; accepts 1/4" to 5/16" (6 to 8 mm) i.d. vacuum tubing.

Thomas No. 4618N60 funnel and receiver volumes are 250 mL. Dimensions: 180 mm H x 110 mm O.D.

Thomas No. 4618N70 funnel and receiver volumes are 500 mL. Dimensions: 230 mm H x 134 mm O.D.

Thomas No. 4618N80 funnel have a 500 mL funnel volume and a 1,000 mL receiver volume. Dimensions: 293 mm H x 134 mm O.D.

Thomas No.	Description	Qty./Uom
4618N60	Filter Holder with Receiver, PSF 47 mm, 250 mL	1/EA, 4/CS
4618N70	Filter Holder with Receiver, PSF 47 mm, 500 mL	1/EA, 4/CS
4618N80	Filter Holder with Receiver, PSF 47 mm, 1,000 mL	1/EA, 4/CS

DWK Life Sciences (Kimble) Bitterness Brewing Kit

ASBC Methods of Analysis is a tool that ensures quality brewing results. Includes a laminated copy of the full method instructions, lab glassware, and components needed to complete the test.



- ASBC Methods of Analysis is a tool that ensures quality brewing results
- Includes a laminated copy of the full method instructions, lab glassware, and components needed to complete the test
- Glassware is manufactured from 33 expansion, low extractable borosilicate glass conforming to USP Type I and ASTM E438, Type I, Class A requirements.

Components for the Bitterness Test Kit:

- (2) Class A Volumetric Pipets, 5 mL
- (2) Class A Volumetric Pipets, 10 mL
- (2) Class A Volumetric Pipets, 1 mL
- (2) Class A Volumetric Pipets, 20 mL
- (6) Heavy-Duty Centrifuge Tube with Screw Cap
- (1) Rubber Bulb
- (25) Transfer Pipets, PE, 5 mL

Thomas No.	Description	Qty./Uom
1162C56	Brewing Beer Bitterness Test Kit	1/EA





EQUIPMENT & INSTRUMENTS

Benchmark

Hotplates, Stirrers and Magnetic Stirrers

- Large Work Surface, 7.5 x 7.5 in.
- Space Saving Design, 8 x 9 in. Footprint
- Chemical Resistant White Ceramic Top Plate
- Safety LEDs Indicate When Heating or Stirring
- Quick and Easy Adjustment of Heating / Mixing



Benchmark hotplates, stirrers and hotplate-stirrers feature an exceptionally durable, chemical resistant white ceramic work surface. Their space-efficient design (8 X 9 in. footprint), makes them ideal for use on crowded bench tops and inside of bio-hoods.

Advanced microprocessor controls with convenient turn knobs allow quick, precise adjustment and maintenance of speed and temperature. With a square 7.5 in work surface, all three models are compatible with a wide variety of popular sizes of borosilicate glass beakers, flasks, bottles and other vessels. The hotplate/magnetic stirrer model (H4000-HS) comes complete with a support rod for mounting thermometers and temperature probes.

Thomas No.	Description	Qty./Uom
1227U97	Hotplate / Stirrer, 7.5" x 7.5", 120 V	1/EA
1227U98	Hotplate, 7.5" x 7.5", 120 V	1/EA
1227U99	Magnetic Stirrer, 7.5" x 7.5", 120 V	1/EA

Thermo Scientific Cimatec™ Stirring Hot Plates Series

Thermo Scientific™ Cimatec™ series digital stirring hotplates offer precise stirring control, exceptional safety and temperature performance for your routine protocols.



Advanced Technology

- Stir-Trac features innovative engineering for slow-speed stirring, consistent speed control, and strong magnetic coupling
- Temperature adjustable in 1 degree increments
- Hot Top warning system protects from accidental burns with prominent display when heating surface is above 50°C (122°F)

Flexible, Robust Design

- Top plate choices in ceramic or aluminum
- Easy-to-read LED display for heating and stirring
- Raised display design protects electronics from spills

Thomas No.	Description	Qty./Uom
1187P02	Cimatec+ Ceramic Top Hotplate Stirrer, 4 x 4", 100-120V, 50/60 Hz	1/EA
1187P04	Cimatec+ Ceramic Top Hotplate Stirrer, 7 x 7", 100-120V, 50/60 Hz	1/EA
1187P08	Cimatec+ Aluminum Top Hotplate Stirrer, 7 x 7", 100-120V, 50/60 Hz	1/EA
1187P10	Cimatec+ Ceramic Top Hotplate Stirrer, 10 x 10", 100-120V, 50/60 Hz	1/EA

Thomas® Hot Plates

- Microprocessor control
- LED temperature display
- Cool Touch, chemical-resistant housing



Thomas hot plates provide superior performance and repeatable results. Low-profile, spill-resistant housing channels fluids away from internal components. Microprocessor control regulates heating function. Ceramic top plate features a chemical-resistant, reflective white top plate surface that is easy to clean. Ceramic temperature range is ambient +5°C to 500°C. Two-year warranty on parts and labor.

Thomas No.	Description	Qty./Uom
1235A21	Hot Plate Stirrer, Ceramic, 7 x 7, 120 V	1/EA
1235A25	Hot Plate Stirrer, Ceramic, 7 x 7, 230 V	1/EA
1235A29	Hot Plate Stirrer, Ceramic, 10 x 10, 120 V	1/EA
1235A33	Hot Plate Stirrer, Ceramic, 10 x 10, 230 V	1/EA

Techne (Bibby Scientific US) Digital Dri-Block® Heaters

Techne® Dri-Block® heaters have been providing a safe, dry, constant temperature source in the laboratory for 50 years.



Key Features

- Small, light, compact footprint - flat top surface allows units to be stacked in storage
- Can hold any combination of aluminium insert blocks, depending on the model chosen
- Digital models enable highly accurate temperature precision
- High quality, precision-engineered blocks provide excellent thermal contact

Thomas No.	Description	Qty./Uom
1200Z71	Dri-Block Heater, Ambient + 5°C to 100°C, 2 Blocks, 115 V	1/EA
1200Z75	Dri-Block Heater, Ambient + 5°C to 200°C, 2 Blocks, 115 V	1/EA
1200Z77	Dri-Block Heater, Ambient + 5°C to 200°C, 3 Blocks, 115 V	1/EA
1200Z79	Dri-Block Heater, Ambient + 5°C to 100°C, 3 Blocks, 115 V	1/EA
1200Z81	Dri-Block Heater, Ambient + 5°C to 100°C, 4 Blocks, 115 V	1/EA

*See web for additional sizes

Techne (Bibby Scientific US) Aluminium Dri-Block® Inserts

- Manufactured from anodised aluminium, Techne Dri-Block® inserts are either single-width to accommodate a wide variety of tubes and vials, or double-width to accommodate microtitre and PCR plates or triple width to accommodate select consumables



Thomas No.	Description	Qty./Uom
5891L29	Block, 25 mm, 6 Holes (48 mm deep & conical)	1/EA

*See web for additional sizes

Benchmark BenchMixer™

Best Value!

The BenchMixer™ sets the new standard in vortex mixing. With advanced Q-Drive™ technology, the BenchMixer™ provides smooth instant vortexing of even the largest sample sizes, including full 50 mL tubes.



- Powerful motor for INSTANT vortexing
- Continuous or "touch" operation
- Q-Drive™ dynamic balancing system
- Variable speed from 200 to 3200 rpm
- Wide variety of accessories

Thomas No.	Description	Qty./Uom
1227U58	Vortex Mixer Benchmixer 120 V	1/EA
1227U59	Vortexer Flat Head	1/EA
1227U60	Vortexer Combo Head	1/EA
1213F87	Horizontal head attachment for BenchMixer Vortexer; 4 x 15 mL tubes	1/EA
1213F86	Horizontal head attachment for BenchMixer Vortexer; 12 x 1.5 mL tubes	1/EA
1213F88	Horizontal head attachment for BenchMixer Vortexer; 2 x 50 mL tubes	1/EA

Benchmark Vornado™ Miniature Vortex Mixers

Powerful is the best word to describe this mini vortexer. With a 4 mm orbit and fixed speed of 2800 rpm, the Vornado instantly vortexes even the largest samples, including nearly full 50 mL tubes. Despite its powerful motor, the Vornado has a footprint of less than 4x4 inches, allowing it to fit on even the most crowded bench.



Thomas No.	Description	Qty./Uom
1199K42	Vornado Miniature Vortexer, Grey Cup Head, 115 V	1/EA
1199K43	Vornado Miniature Vortexer, Blue Cup Head, 115 V	1/EA
1199K44	Vornado Miniature Vortexer, Green Cup Head, 115 V	1/EA
1199K45	Vornado Miniature Vortexer, Purple Cup Head, 115 V	1/EA
1199K46	Vornado Miniature Vortexer, Red Cup Head, 115 V	1/EA

Bioscience International SAS Super 100 & 180 Microbial Air Samplers



Key Benefits

- Full traceability - records day, time, site, volume of air sampled, and operator's name to ensure full traceability
- Low running cost & operational flexibility - no need to purchase expensive, proprietary media strips, cassettes, or plates. Standard 55 mm contact plates or 90 mm petri dishes can be used
- Data transfer & reporting according to GLP-GMP-RS232 output for PC printer connection
- Interval sampling, delayed start, & remote control options - programmable start time, time between aspirations, volume of air for each aspiration, and total air volume to be sampled; can be controlled by infrared remote control
- Durable construction - molded polyresin housing for added strength and operational life; 99% of the SAS units sold since 1979 in North America are still in use today

Thomas No.	Description	Qty./Uom
8250A57	Aluminum Head and Adapter, for standard 90 mm plates	1/EA
8250A55	Aluminum Head, for 55 mm contact plates	1/EA
8250A59	Revit Charger, 110 v	1/EA
8250A61	Revit Charger, 220 v	1/EA
1179T87	SAS Air Sampler Battery Charger, 110-220v	1/EA
1171U40	SAS Disposable Sampling Heads, individually bagged & irradiated	1/EA
8250A50	SAS Super 100 Air Sampler	1/EA
0217A05	SAS Super 180 Air Sampler	1/EA
8250A64	Stainless Steel Head Adapter, for standard 90 mm plates	1/EA
8250A63	Stainless Steel Head, for 55 mm contact plates	1/EA

Hach IntelliCAL™ LDO101 Standard Luminescent/Optical Dissolved Oxygen (LDO) Probe



- Hach IntelliCAL™ LDO is a revolutionary breakthrough in the measurement of dissolved oxygen, eliminating the numerous reliability and maintenance concerns inherent of older DO measurement technologies
- IntelliCAL™ digital probes alert the user when re-calibr IntelliCAL™ digital probes can be moved between meters without the need to re-calibrate or re-enter measurement setting

Thomas No.	Description	Qty./Uom
1181P25	IntelliCAL LDO101 Standard Luminescent/Optical Dissolved Oxygen (LDO) Probe, 1 meter cable	1/EA
1181P26	IntelliCAL LDO101 Standard Luminescent/Optical Dissolved Oxygen (LDO) Probe, 3 meter cable	1/EA

Hach IntelliCAL™ CDC401 Standard Conductivity Probe



- IntelliCAL™ CDC401 is a digital, graphite, 4-pole conductivity probe
- Provide ultimate traceability in conductivity measurement history

Thomas No.	Description	Qty./Uom
1189P79	IntelliCAL CDC401 Standard Conductivity Probe, 1 meter cable	1/EA
1189P80	IntelliCAL CDC401 Standard Conductivity Probe, 3 meter cable	1/EA

Hach IntelliCAL™ PHC201 Standard Gel Filled pH Electrodes



- IntelliCAL™ PHC201 is a digital, combination pH probe with a non-refillable, gel-filled double-junction reference and built-in temperature sensor
- PHC201 has a ceramic pin reference junction and is ideal for measuring pH in general water quality applications

Thomas No.	Description	Qty./Uom
1185M27	IntelliCAL PHC201 Standard Gel Filled pH Electrode, 1 meter cable	1/EA

Thermo Scientific Orion Waterproof Green pH Electrodes

Free of lead and mercury unlike many
pH electrodes allowing easy disposal



- Meets all RoHS requirements
- Durable plastic body that can be used under rugged conditions
- Waterproof BNC connector is impervious to water

Thomas No.	Description	Qty./Uom
1229X41	Electrode, Single Junction, Gel Filled w / BNC Connector	1/EA
1229X42	Electrode, Double Junction, Gel Filled w / BNC Connector	1/EA
1229X44	Electrode, Double Junction, Refillable w / BNC Connector	1/EA

Thermo Scientific Orion ROSS® Sure-Flow® pH Electrodes



- Junction can be cleaned easily between measurements
- Pressing down on the cap allows filling solution to flow through the junction, carrying away any contamination that may interfere with measurement

Thomas No.	Description	Qty./Uom
1234Y71	ROSS® Sure-Flow® Combination Electrode, Epoxy Body, Waterproof, BNC Connector	1/EA
1234Y72	ROSS® Sure-Flow® Combination Electrode, Waterproof, BNC Connector	1/EA
1234Y73	Combination Semi-Micro Electrode, BNC	1/EA

Thermo Scientific Orion STAR A121 pH Portable Meter



- Large, informative screen clearly shows the main information, including pH or mV reading, temperature, meter mode, calibration information and battery life
- Don't miss a reading – AUTOREAD™ locks in the stable reading on your screen and ready indicator alerts when readings are stable
- Up to 3 point pH calibration
- Non-volatile memory holds up to 50 data points
- Four AA batteries (included) provide over 2000 hours of operation or purchase the universal power adapter (sold separately) to run meter on AC power
- 3 year meter manufacturer's replacement warranty

Thomas No.	Description	Qty./Uom
1218X24	STAR A121 pH Hand-Held Meter with Electrode Stand	1/EA
1218X25	STAR A121 pH Hand-Held Meter with Electrode Stand; 9107BNMD Gel-filled Epoxy pH/ATC Triode with 1.5 Meter Cable; 916099 pH Buffer 60 mL Kit (pH 4, 7, 10 Buffer, Storage and Cleaning Solutions); 911110 Rinse Solution Pouches; STARA-CS Star A Hand-Held Meter Hard Carrying Case; STARA-AR Star A Hand-Held Meter Armor with Stand and Electrode Holders	1/EA

Thermo Scientific Orion Orion AQUAfast AQ3010 Turbidity Meter



Perfect for the plant, field or even in a lab, this simple, yet powerful turbidity meter offers impressive features. Auto-ranging from 0 to 1000 NTUs, the AQ3010 meter generates an accurate turbidity reading in seconds. Results are easy to read and record from the large, bright LCD display in a variety of work environments.

This infrared LED measurement has no temperature effects to change the sample during testing, no maintenance due to a consistent light source, plus better results for colored samples benefits over tungsten meters.

Ergonomic IP67 turbidity meter for lab or field use

- Meets ISO 7027 and offers consistent light source for greater accuracy
- No mixing or diluting with EPA-approved polymer bead primary standards for faster calibration
- Three year manufacturer's warranty

Thomas No.	Description	Qty./Uom
1224B94	Orion Aquafast AQ3010 Turbidity Meter Kit	1/EA

Thermo Scientific Orion Star A323 Dissolved Oxygen Portable Meter

The Thermo Scientific Orion Star A323 RDO/Dissolved Oxygen Portable Meter is the top choice for advanced measurements on location. Get the information you need quickly and easily from the large, backlit graphic LCD display. Informative display shows dissolved oxygen in percent saturation or concentration with temperature and electrode status, time, date, sample ID, user ID and calibration points. Advanced features such as stability and averaging options provide additional options allowing for laboratory accuracy everywhere you need it.

- Anyone can use this meter with its plain language screen prompts, soft keys that update for easy selection and a multilingual interface that supports English, Spanish, French, Italian, German and Chinese
- No need to worry about DO probe compatibility – the meter accepts and automatically recognizes Orion polarographic and RDO optical/luminescence-based probes
- Accurate results are easy with automatic temperature, manual salinity and automatic/manual barometric pressure compensation
- Don't miss a reading – auto-read locks in the stable reading on your screen, ready indicator alerts when readings are stable and timed reading gathers data in specific time intervals
- Non-volatile memory holds up to 5000 data points with time and date stamp
- Easily transfer data and keep meter software up-to-date with the USB and RS232 ports and complimentary data analysis software
- Four AA batteries (included) provide over 800 hours of operation or purchase the universal power adapter (sold separately) to use AC power
- Perfectly portable, waterproof and protected to take anywhere with a IP67-rated housing

Certifications: CE, TUV, FCC Class A limits

Thomas No.	Description	Qty./Uom
1218X61	Star A323 RDO/DO Hand-Held Meter; 087010MD RDO Optical DO Probe with 3 Meter Cable; STARA-CS Star A Hand-Held Meter Hard Carrying Case; STARA-AR Star A Hand-Held Meter Armor with Stand and Electrode Holders	1/EA

Hach Portable pH, Conductivity, Optical Dissolved Oxygen (DO), ORP, and ISE Multi-Parameter Meter

Designed for your water applications, the Hach HQ40d portable meter is an advanced meter that takes the guesswork out of measurements. HQd™ meters connect with smart probes that automatically recognize the testing parameter, calibration history, and method settings to minimize errors and setup time.

- Portable meter measures critical water quality parameters - without the need for multiple instruments
- Intuitive user interface for simple operation and accurate results
- Trust your measurements - IntelliCAL™ smart probes store all calibrations in the probe
- Guided calibration and check standard routines reduce calibration errors while stabilization alerts and visual measurement lock ensure that you can trust the accuracy of the results
- Calibration status indicator and custom calibration alerts ensure accurate results
- Calibration history allows quick and easy change out of probes without re-calibrating
- All connections between the meter and the probe are secure and waterproof
- Meter kit includes field case, 4 AA batteries, protective meter glove, power adapter, USB/DC power adapter for data transfer, quick-start guide, user manual, and documentation CD

Thomas No.	Description	Qty./Uom
1189N42	Portable pH, Conductivity, Optical Dissolved Oxygen (DO), ORP, and ISE Multi-Parameter Meter	1/EA



Oakton pH 5+ Meter

High ±0.01 pH accuracy at economical prices

- Reads pH and temperature
- Automatic Temperature Compensation (ATC)
- All push button operation
- Three-point pH calibration
- Auto buffer recognition
- Use with most pH electrodes with BNC connectors

The microprocessor-based pH 5+ meter is Oakton's most economical portable pH meter, yet it gives you the same high accuracy and reliability of our other portable meters! Use this meter to take routine pH and temperature measurements. Meter includes a protective rubber boot that also acts as a meter stand.

Thomas No.	Description	Qty./Uom
1200M04	pH 5+ Meter with ATC probe, rubber boot, and batteries	1/EA
1200M05	pH 5+ Meter with single-junction, sealed, epoxy-body electrode, ATC probe, rubber boot, and batteries	1/EA
1200M06	pH 5+ Meter kit with "all-in-one" pH electrode, pH buffer solutions, sample bottles, rubber boot, batteries, and carrying case	1/EA



labForce (a Thomas Scientific Brand) PH200 Portable Meter Kit for Beverage Making

The labForce TS-B200 Portable pH Meter is designed for professional pH measurement of for brewing, such as beer, wine, kombucha, juice, etc. No need to worry about DO probe compatibility – the meter accepts and automatically recognizes Orion polarographic and RDO optical/ luminescence-based probes

- 3-in-1 Glass pH/Temperature Electrode adopts a Long-Life reference system, and a patented pH/Temperature Dual sensor structure
- Its rugged design incorporates a white backlit large LCD, foldable stand (for benchtop use), soft silicon case giving you a good grip, connector protection cap, IP57 waterproof, battery and/or USB power supply
- Includes Meter, 3-in-1 Glass pH/Temperature Electrode, buffers, USB cable, software disk & carrying case

Thomas No.	Description	Qty./Uom
1147H86	Portable pH Meter for Beverage Making (PH200 Meter, 3-in-1 pH/Temp. Electrode, buffers, USB cable, software disk & Carrying Case)	1/EA



Thermo Scientific Orion Orion Star A123 Dissolved Oxygen Portable Meter

Thermo Scientific Orion Star A123 Dissolved Oxygen Portable Meters combine simplicity with accuracy. A large LCD displays dissolved oxygen readings along with temperature. Icons provide quick updates on battery life and completed calibration status. Simple button layout and onscreen messages help with calibration and setup menu choices.

- Large, informative screen clearly shows the main information, including DO reading in mg/L or % saturation, temperature in °C or °F, meter mode and battery life
- Automatic temperature, manual salinity input and manual barometric pressure compensation for an accurate result
- Don't miss a reading – AUTOREAD™ locks in the stable reading on your screen and ready indicator alerts when readings are stable
- Accepts Thermo Scientific Orion polarographic dissolved oxygen probes
- Non-volatile memory holds up to 50 data points
- Four AA batteries (included) provide over 2000 hours of operation or purchase the universal power adapter (sold separately) to run meter on AC power
- Perfectly portable, waterproof and protected to take anywhere with a IP67-rated housing
- 3 year manufacturer's meter replacement warranty

Thomas No.	Description	Qty./Uom
1218X32	Star A123 DO Hand-Held Meter with Electrode Stand	1/EA



MilliporeSigma Spectroquant® Prove 300 UV/VIS Spectrophotometer

Spectroquant® Prove 300 is an incredibly robust UV/VIS spectrophotometer, optimized for sensitive measurements such as the analysis of drinking water and beverages. Programmed for over 180 reagent tests and free methods, capable of both UV and VIS measurements, and equipped with a long-lasting xenon lamp, Prove 300 is the ideal tool for rapid, reliable results.

Preprogrammed with Free Methods

Prove 300 is preprogrammed for an extensive range of Spectroquant® reagent and cell tests to speed up your work. Plus, it is compatible with 10, 20 or 50 mm cuvettes to suit a variety of measuring ranges. Our latest test kits for drinking water and beverage analysis include: sulfate tests with an extended measuring range, and manganese tests that offer accuracy without turbidity.

To further facilitate your analysis, Prove 300 also offers free, pre-programmed application procedures, such as bromate in drinking water, as well as ICUMSA and brewery methods.

Live ID for Maximum Security

Each Spectroquant® reagent test kit contains an AutoSelector with a Live ID code. This new identification system not only transfers more data than other barcodes, but “live” data – thanks to automatic, complimentary calibration updates.

Just insert the reagent cell and AutoSelector into the spectrophotometer. Thanks to ambient light protection, you don't even have to close the lid. Prove 300 will detect the test method, lot number, expiry date, and calibration updates from the Live ID code, and calculate results accordingly. This ensures faster analyses of drinking water and beverages, secure, fully traceable results and simpler audits.

Robust and Easy to Clean

Spectroquant® Prove 300 is built to last and resistant to most chemicals used in drinking water analysis. Even if something is spilled in the sample compartment, you can simply remove the cell holder, rinse the compartment with water and wipe it clean.

Easy Verification with AQA Prime

AQA Prime makes analytical quality assurance extremely secure and easy. You have a clear overview of AQA status, information, updates and options. You can select individual settings and measurements for each AQA. And you have complete verification and documentation for all stages of quality control: AQA 1 (instrument check), AQA 2 (system check), and Pipette Check.

Data on Demand

Accurate documentation is essential in the drinking water and beverage industry. Prove 300 makes it safer and simpler than ever before. The smart screen provides a clear list of all results, which can be easily filtered by date, time, spectra, method, sample ID, keyword or user.

Once you have your results, you can export the data in your preferred form from brief overview to complete protocol. Prove 300 offers multiple ways to securely transfer data. Use the USB ports to connect the spectrophotometer to your printer or to save selected data on a flash drive.

Thomas No.	Description	Qty./Uom
1183B87	Spectroquant® Prove 300 UV/VIS Spectrophotometer	1/EA



MilliporeSigma Spectroquant® Prove 600 UV/VIS Spectrophotometer

Equipped with high-end UV/Vis optics, and the capability to hold cells of up to 100 mm, the Spectroquant® Prove 600 packs great power into a compact size. The Spectroquant® Prove 600 delivers excellent resolution and sensitivity for use with test kits, complex kinetics or spectral measurements.

- The Spectroquant® Prove family are a series of cutting edge spectrophotometers for easy analysis of water, food and beverage, and environmental samples
- All Spectroquant® Prove instruments are pre-programmed for over 200 Test Kits and automatic bar code recognition which ensures the correct method parameters are applied
- Automatic calibration updates are recorded, making the use of analytical Test Kits as easy as never before

Thomas No.	Description	Qty./Uom
1144A74	Prove 600 UV/VIS Spectrophotometer, 1.8 nm spectral bandwidth	1/EA



Hach DR 3900 Benchtop Spectrophotometer

Expert water analysis made simple

Simplicity throughout: The DR3900 spectrophotometer provides the simplest way to perform tests for water analysis. Used together with TNTplus™ test kits testing steps are reduced.

Simple Preparation

- TNTplus™ vials use Dosicaps (freeze-dried reagents integrated into sealed cap) that are easier to use than Powder Pillows or liquid reagents, without any risk of contamination

Fast Execution

- A 2D barcode on the TNTplus™ vial is automatically read by the Hach DR spectrophotometer to identify the appropriate method and take the measurement

Comprehensive Documentation

- Measurement results are documented on the detailed level with timestamp, operator ID, absorbance reading, and calculated concentration
- The 2D barcode delivers the lot number and expiry date, logged with every result

*RFID currently available only in US, Canada, Puerto Rico, Australia, New Zealand, and Colombia. Customers in other countries should order LPV440.99.00002. Please contact your Thomas Scientific Sales Representative.

Thomas No.	Description	Qty./Uom
1189G94	DR 3900 Benchtop Spectrophotometer with RFID Technology	1/EA

*See web for additional options



Hach DR 6000™ UV VIS Spectrophotometer

The industry's most advanced lab spectrophotometer

The DR6000™ is the industry's most advanced laboratory spectrophotometer for water testing. It offers high-speed wavelength scanning across the UV and Visible Spectrum, and comes with over 250 pre-programmed methods including the most common water and environmental testing methods used today. With optional accessories allowing for high-volume testing via a carousel sample changer, and increased accuracy with a sample delivery system that eliminates optical difference errors, this instrument ensures you are ready to handle your wide-ranging water testing needs.

- Your water and environmental testing needs, all in one spectrophotometer
- A carousel sample changer allows up to seven sequential measurements
- The DR6000™ comes with integrated QA software for scheduling, documenting and interpreting all of your needed quality measurements

Thomas No.	Description	Qty./Uom
1145T00	DR 6000™ UV VIS Spectrophotometer with RFID Technology	1/EA

*See web for additional options



Thermo Scientific UV-Vis GENESYS™ 30 VIS Spectrophotometer

The Thermo Scientific™ GENESYS™ 30 is the most thoughtfully designed spectrophotometer available today. Its high resolution color display, large sample compartment, and data export options meet modern expectations.

Designed for usability

- Large removable and washable sample compartment
- Familiar keypad controls for easy routine use

Backed by a two-year warranty and skilled technical support

- Quality and Dependability from a global leader

Data any way you want it

- USB data export
- Snap-on thermal printer

Thomas No.	Description	Qty./Uom
1182H18	GENESYS 30 VIS Spectrophotometer, 100-240V	1/EA

*See web for additional options



Hach

TitraLab® AT1000 Series Automatic Titrators

The AT1000 models are accurate, reliable and easy to use instruments for performing titrations in the laboratory. This titrator was designed in Germany as part of the Hach Titralab® AT1000 family of automatic titrators.



- Titrator is delivered preassembled for easy installation and does not require complex programming like other titration systems on the market
- System offers superb dependability so you don't suffer from downtime and it is easy to use for all skill levels
- Tip: If you plan to run multiple application packs on one instrument you will need to order the highest number instrument model to ensure you can run all applications on the one instrument

Thomas No.	Description	Qty./Uom
1147M14	TitraLab® AT1000 Series Potentiometric Titrator, 1 Burette	1/EA
1147M15	TitraLab® AT1000 Series Potentiometric Titrator, 1 Burette, 1 Pump	1/EA
1147M16	TitraLab® AT1000 Series Potentiometric Titrator, 1 Burette, 2 Pumps	1/EA
1147M17	TitraLab® AT1000 Series Potentiometric Titrator, 2 Burettes, 2 Pumps	1/EA

Hach

Titration Application Packs for AT1000 Series Automatic Titrators

- Suited for Titralab® AT1000 Series Automatic Titrators



Thomas No.	Description	Qty./Uom
1147M26	Titration Application Pack Food & Beverage: pH & Total Acidity (Milk, Tomato Sauce, Fruit Juice) (for models AT1102/AT1112/AT1122/AT1222)	1/EA

Hach

TL23 Series Laboratory Turbidimeters

The TL23 Series laboratory turbidimeters for a wide range of turbidity applications feature the trusted technology of Hach's legacy benchtop turbidimeters and improved functionality to simplify testing. These features include a color touch screen, a USB port for data transfer, self-diagnostics for quality assurance, and single point calibration for measurements under 40 NTU/FNU.



- The TL23 Series' large full color touch screen display and intuitive user interface accelerate setup, calibration and measurement
- The TL23 Series ensures stable readings and accurate analysis by capturing turbidity readings once the device detects sample stability
- With a USB port for easy data export, sample identification for traceability, and self-diagnostics for quality assurance, Hach® makes it easy to Be Right

Thomas No.	Description	Qty./Uom
1177N33	TL2300 Tungsten Lamp Turbidimeter, EPA, 0 - 4000 NTU	1/EA
1159F51	TL2350 Tungsten Lamp Turbidimeter, EPA, 0 - 10000 NTU	1/EA

Hach

2100Q Portable Turbidimeter

Meets EPA Method 180.1

- Single-standard RapidCal™ calibration offers the simplest solution for low-level measurements
- Single-step verification and on-screen assisted calibration eliminates the need to reference complicated manuals
- Exclusive algorithm in the Rapidly Settling Turbidity™ mode provides accurate, repeatable measurements for rapidly settling, difficult-to-measure samples while eliminating the need for redundant measurements and estimating
- Hach 2100Q and 2100Q is Portable Turbidimeters provide confidence your measurements are right every time. On-screen assisted calibration and verification save you time and ensure accuracy



Thomas No.	Description	Qty./Uom
1224Y43	2100Q Portable Turbidimeter	1/EA
1224Y45	Power module (includes: universal power supply, instruction sheet)	1/EA

Benchmark

Autoclave 120V Bioclave

Despite the space-saving exterior dimensions of the Bioclaves, the stainless steel chambers are surprisingly large, accommodating a variety of liquids, media, instruments, glassware, plasticware and other common laboratory items. Both of these benchtop models include a mechanical and electrical safety interlock that prevents the door from being opened until the pressure has reached zero PSI.



With large digital displays and fully automatic operation, all segments of the cycle (fill, sterilize, exhaust and dry) commence and run to completion by simply pressing the start button. An optional thermal mini-printer is also available for providing a record of sterilization parameters (compatible with BioClave 16 only).

BioClave Mini™ Autoclave Oven

- The 8 liter BioClave Mini is pre-programmed to meet basic sterilization needs

BioClave 16™ Autoclave Oven

- The 16 liter BioClave offers three cycle options (standard programs), which are preset for use with liquids, wrapped instruments or unwrapped instruments/plasticware

Thomas No.	Description	Qty./Uom
1227W09	Autoclave 8L Mini Research 120V Bioclave	1/EA
1227W10	Autoclave 16L Research 120V Bioclave	1/EA

Hach

TNTplus Nutrients Basic Reagent Set

Nutrients Basic Reagent Set, TNTplus-includes 25 tests of each of the following:

- Nitrogen
- Total, LR
- Phosphorus, Total and Reactive (ortho), LR



Thomas No.	Description	Qty./Uom
C753T81	Nutrients Basic Reagent Set, TNTplus	1/EA
C753T82	Nutrients Advanced Reagent Set, TNTplus	1/EA

Hach

Chemical Oxygen Demand (COD) Reagent, TNTplus, HR, 25 tests

For determination of Chemical Oxygen Demand (COD) by the Reactor Digestion Method, using TNTplus vials. Hach Method 8000. Range: 20-1500 mg/L COD.



- TNTplus COD High Range (20-1500 mg/L) vial tests with automatic method detection
- No reagent blank necessary
- Innovative vial and reagent delivery

Thomas No.	Description	Qty./Uom
C995F08	Chemical Oxygen Demand (COD) Reagent, TNTplus, HR, 25 tests	25/PK
C939L89	Chemical Oxygen Demand (COD) Reagent, TNTplus, UHR, 25 tests	25/PK
C939L90	Chemical Oxygen Demand (COD) Reagent, TNTplus, UHR, 150 tests	150/PK

Hach

VDK (Vicinal Diketones) TNTplus Vial Test

Features include:

- Ready-to-use, high-precision pre-dosed cuvette tests
- Reduction of errors due to bar-coded vials
- RFID technology to document the shelf life of the cuvettes and ensure traceability of your analyses



Thomas No.	Description	Qty./Uom
C753T94	VDK (vicinal diketones) TNTplus Vial Test (0.015-0.5 mg/kg)	25/PK
C974X17	Chemical Oxygen Demand (COD) TNTplus Vial Test, LR (3-150mg/L COD), 25 tests	25/PK

LaMotte Coliform Test Kit

- Yes/No qualitative test
- Sensitivity less than 2.2 per 100 mL of sample
- No incubation equipment required; only room temperature



Thomas No.	Description	Qty./Uom
9859R20	Coliform Test Kit	1/EA

Reichert Technologies Brix/RI-Chek Refractometer

The Brix/RI-Chek is a versatile refractometer that raises the bar for performance and value. It is easy to operate and provides quick results. The Brix/RI-Chek has an IP65 Dustproof/Water resistant rating so it can be used in virtually any environment.



The Brix/RI-Chek features a 5-digit, full view screen that displays all pertinent measurement data in one view. This feature reduces the costs associated with reading errors and eliminates the time associated with waiting for scrolling values.

Reichert Brix/RI-Chek Key Features:

- 3 measurement scales
- Brix includes Automatic Temperature Correction (ATC)
- Refractive index with automatic temperature
- Refractive index at actual temperature
- 5-digit, full view LCD screen

Thomas No.	Description	Qty./Uom
1228M84	Brix/RI-Chek Refractometer	1/EA

Atago Digital Refractometer, Wine Must, WM-7

- Digital accuracy
- Compact size
- Push button operation
- Automatic temperature compensation



The Atago Model WM-7 digital refractometer provides the scales used in all wine-making regions of the world in one easy-to-select unit. The user only needs to choose one of the scales by pressing the SELECT button, placing one or two drops of Must on the prism and pressing the START button. The reading is shown on the large LCD within two seconds. Calibration is accomplished by placing a couple drops of water on the prism and pressing the ZERO button. Stable LED light source ensures accuracy and repeatability between users. With rugged construction, water-resistant design and light weight, this unit will provide years of reliable use in the fields, even in harsh, humid conditions. Complete with carrying case, plate screwdrivers, 9V battery and instructions. Dimensions: 9 x 17 x 4 (L x W x H, cm); Weight: 300 g.

Thomas No.	Description	Qty./Uom
8045F41	Digital Refractometer, Wine Must, WM-7	1/EA

Labnet Spectrafuge™ 6C Compact Research Centrifuge

- The Spectrafuge™ 6C has been designed for quick production of PPP (Platelet Poor Plasma) and PRP (Platelet Rich Plasma)
- The included 6 place rotor is capable of running round or conical bottom 15 mL or 10 mL tubes. Adapters for smaller tube sizes are available separately
- Time can be set as low as 30 seconds and to the "On" position for a continuous run. The Spectrafuge™ 6C is the smallest centrifuge in its class. The 8x9 inch footprint makes it ideal for almost any laboratory and it can easily be transported from lab to lab.



Thomas No.	Description	Qty./Uom
1215J64	Spectrafuge™ 6C, Research Centrifuge	1/EA

Hettich Hettich Rotofix 32 A Benchtop Centrifuge

The ROTOFIX 32 A is a rugged, versatile and indispensable centrifuge and can also play a vital role in cytology. With its wide variety of accessories, the ROTOFIX 32 A can also be used for the preparation of samples. Tubes that are suitable for chrome bath testing are also available.



Features:

- Rugged, versatile, indispensable benchtop for routine laboratory tasks in doctors' practices and small hospitals
- The ROTOFIX 32 A supports the Hettich Cyto-system which means there is no need to change your method or your accessories
- Five year warranty
- Hettich's 12-place Clip Rotor is capable of spinning 0.2 to 6 mL single, double or large funnel formats with optional bio-containment
- **Max Capacity:** 4 x 100 mL / 6 x 94 mL
- **Max. RPM/RCF:** 6,000/4,226
- **Temperature Control:** Ambient

Thomas No.	Description	Qty./Uom
1211P71	Rotofix 32A Centrifuge, 16/4 Places, 15/50 mL, 90° Swing-out, 115V	1/EA
1211P72	Rotofix 32A Centrifuge, 6 Places, 15/50 mL, 90° Swing-out, 115V	1/EA

EMD Millipore Scepter 2.0 Handheld Automated Cell Counter

The Scepter Cell Counter delivers rapid cell counts in a handheld easy to use format. Its on screen instructions guide you through the sampling process and in less than 40 seconds.



- Coupled with precision liquid handling channels and electronics, the Scepter sensor accurately and reliably provides cell population statistics
- The 40 µm Scepter Sensors are designed to count particles between 3 µm & 17 µm on the Scepter 2.0 Cell Counter
- The 60 µm Scepter Sensors are for counting particles between 6 µm & 36 µm on the Scepter 2.0 Cell Counter

The Scepter cell counter's screen displays:

- Cell concentration
- Average cell size
- Average cell volume
- This system is intended for research use only and has been tested with cell types representative of those in use today

Thomas No.	Description	Qty./Uom
1193G83	Scepter 2.0 Handheld Automated Cell Counter, w/ 50 pk of 40 µm Sensors	1/EA

Adam Equipment Core® Compact Portable Balances

The Core series from Adam Equipment is the best choice for simple operation and economy.



Features

- 9 weighing units
- Full range tare
- Zero tracking
- Simple 4 button operation
- Backlit LCD display
- Stainless steel pan
- ShockProtect™ overload three-point protection
- AC adapter

Thomas No.	Description	Qty./Uom
1224C72	Core™ Compact Portable Balance, 250 g x 0.1 g, 4.7" dia. Platform, 110V	1/EA

*See web for additional Adam Equipment Balance options

Adam Equipment

Nimbus Precision Balances

Nimbus offers 19 models that deliver a full range of precision readabilities, from 0.1mg to 0.1g. Innovative design requires less space but retains the highest level of performance. The weighing system is fabricated using hardened materials, helping the Nimbus tolerate rigorous laboratory use. Highly efficient mechanics plus improved processing power of the electronics leads to more accurate results.



The internal mechanism is fabricated using hardened materials, helping the Nimbus tolerate rigorous laboratory use.

- Vivid, backlit LCD easily visible in any lighting conditions
- Sealed keypad protects against dirt and spills
- The weighing sensor in the Nimbus is crafted from a single block, and contains fewer parts than a traditional force motor balance
- Color-coded keys facilitate quick recognition of the most frequently used buttons
- Robust metal housing protects internal components in harsh environments
- USB and RS-232 interfaces provide easy communication with computers and printers
- Printouts include date and time for data tracking within Good Laboratory Practices (GLP) guidelines
- **Operating Temperature:** 15° to 35°C / 59° to 95°F
- **Overall Dimensions:** 8.7"x12.2"x3.5" / 220x310x90 mm (WxDxH)
- **Construction:** Extruded aluminum base with a die-cast aluminum case

Nimbus balances are suitable for use in universities, medical laboratories and vets.

Thomas No.	Description	Qty./Uom
1191R24	Nimbus Precision Balance, 8200 g x 0.1 g, 6.3" pan, 115V	1/EA

*See web for additional Adam Equipment Balance options

labForce (a Thomas Scientific Brand)

TS-T Series Advanced Laboratory Balances

Advanced weighing performance
Maximum ease of operation

Ease of operation due to 5" capacitive touchscreen

The labForce TS-T Series balances feature the latest generation display maximizing comfort of use right at your fingertips. The clear menu and practical arrangement of the display guarantee the best ergonomics for your everyday tasks.

Personalization taken to the next level

The labForce TS-T Series is the only balance available on the market that provides the option to design the display using a wide selection of widgets. The customizable display of the series offers direct access to the results of your work and other important information directly from the home screen.

Unlimited possibilities of communication

A wide array of available interfaces allow for multiple means of communication with peripheral devices.

Ergonomics of operation

Built-in IR sensors allow numerous operations (e.g., tarring, transmitting the result to a printer or selecting successive steps of a process, etc.) to be performed by simply moving a hand across the sensor.

Data safety

The balances feature ALIBI memory that is a warranty for safety and automatic recording of your measurements. Options such as data preview, copying and archiving are available to users as well.

Weighing Data Management

The USB interface facilitates quick transfer and copying of any results of your work (measurements, reports, databases) to another balance.

Five year warranty included on all models.

Thomas No.	Description	Qty./Uom
1160T77	Analytical Balance, 160 g x 0.1 mg, 100-240V	1/EA
1160T78	Analytical Balance, 220 g x 0.1 mg, 100-240V	1/EA
1160T79	Analytical Balance, 310 g x 0.1 mg, 100-240V	1/EA



Thermco

Rascher & Betzold A.S.B.C. High Precision Top Reading Hydrometers

A.S.B.C. Top Reading Pyrex® Brand Glass Hydrometers High precision A.S.B.C. (American Society of Brewing Chemists) hydrometers used for the determining extract of beer and wort specified and described in Methods of Analysis of the American Society of Brewing Chemists.

Readings are made on hydrometers at the top of the meniscus when overflowing in a clean special PYREX® brand glass cylinder. They check laboratory determinations made with the Boot or Reischauer pycnometer. All instruments and cylinders must be kept clean.

The top reading hydrometers are accurate to within one scale division



Thomas No.	Description	Qty./Uom
1179Y09	A.S.B.C. Small Laboratory Type Hydrometer, -2/6 x 0.1	1/EA
1179Y10	A.S.B.C. Small Laboratory Type Hydrometer, 0/8 x 0.1	1/EA
1179Y11	A.S.B.C. Small Laboratory Type Hydrometer, 8/16 x 0.1	1/EA
1179Y12	A.S.B.C. Small Laboratory Type Hydrometer, 16/24 x 0.1	1/EA
1179Y13	A.S.B.C. Large Laboratory Type Hydrometer, 0/8 x 0.1	1/EA
1179Y14	A.S.B.C. Large Laboratory Type Hydrometer, 8/16 x 0.1	1/EA
1179Y15	A.S.B.C. Large Laboratory Type Hydrometer, 16/24 x 0.1	1/EA
1179Y16	A.S.B.C. Large Plant Type Hydrometer, 0/14 x 0.1	1/EA
1179Y17	A.S.B.C. Large Plant Type Hydrometer, 12/26 x 0.1	1/EA
1179Y18	A.S.B.C. Large Strong Plant Type Hydrometer, 2/8 x 0.1	1/EA
1179Y19	A.S.B.C. Large Strong Plant Type Hydrometer, 8/14 x 0.1	1/EA
1179Y20	A.S.B.C. Large Strong Plant Type Hydrometer, 10/16 x 0.1	1/EA
1179Y21	A.S.B.C. Large Strong Plant Type Hydrometer, 0/10 x 0.1	1/EA
1179Y22	A.S.B.C. Large Strong Plant Type Hydrometer, 10/20 x 0.1	1/EA
1179Y23	A.S.B.C. Special Strong Plant Type Hydrometer, -1/2 x 0.05	1/EA
1179Y24	A.S.B.C. Special Strong Plant Type Hydrometer, 2/5 x 0.05	1/EA
1179Y25	A.S.B.C. Special Strong Plant Type Hydrometer, 6/9 x 0.05	1/EA
1179Y26	A.S.B.C. Special Strong Plant Type Hydrometer, 9/12 x 0.05	1/EA
1179Y27	A.S.B.C. Special Strong Plant Type Hydrometer, 11/14 x 0.05	1/EA
1179Y28	A.S.B.C. Special Strong Plant Type Hydrometer, 12/15 x 0.05	1/EA
1179Y29	A.S.B.C. Special Strong Plant Type Hydrometer, 14/17 x 0.05	1/EA

Bel-Art Products

DURAC® Triple Scale Beer and Wine Hydrometers

Perfect beer brewing and wine making results

- Monitor fermentation process to see if variables should be altered
- Calculate approximate alcohol content of the finished product

Available in 3 styles:

- Shatterproof
- Polycarbonate
- Glass



Thomas No.	Description	Qty./Uom
1162D77	Triple Scale Beer and Wine Hydrometer, Polycarbonate	1/EA
1162D78	Triple Scale Beer and Wine Hydrometer, Shatterproof Plastic	1/EA
1162D79	Triple Scale Beer and Wine Hydrometer, Glass	1/EA

Thomas®

Specific Gravity Plain Form Hydrometer

- For liquids heavier than water

Specific gravity plain form hydrometers cover a variety of ranges and are for liquids heavier than water. Plain form hydrometers measure 165 mm (6.5") length, have 0.005 divisions and temperature of standardization is 60°F/60°F.



Thomas No.	Description	Qty./Uom
1234K71	Hydrometer, Specific Gravity, Plain Form, 1.400 To 1.650	1/EA
1234K72	Hydrometer, Specific Gravity, Plain Form, 1.600 To 1.850	1/EA

*See web for additional sizes

H-B Instrument

FRIO-Temp® Precision Liquid-In-Glass Verification Thermometers

Ideal for chemical industry, petro chemistry, pharmaceutical, medical, cosmetic, producers of chemicals, university, dairies, breweries, distillers, beer cellars, refrigeration house, hot houses, scientific institutes, blood banks, refrigeration/freezer/incubator/oven equipment producers and producers of laboratory equipment.

Features

- Fluoropolymer coating for safety, individual serial numbers
- A multi-language (English, French, German, Italian, Portuguese and Spanish) Statement of Accuracy indicating accuracy traceable to NIST and DAkkS
- Designed to be very easy to read celsius-scale
- 100% nontoxic, nonhazardous, biodegradable and green
- All thermometers are filled with Enviro-Safe liquid and supplied with a unbreakable plastic bottle filled with Enviro-Safe liquid or glass beads
- Insert thermometer into the bottle and place near the samples for best results

Thomas No.	Description	Qty./Uom
1212P64	FRIO-Temp® Precision Liquid-In-Glass Verification Thermometer, Blood Bank, 20/70 °F x 1°F	1/EA



Sartorius (Biohit Family) mLINE Adjustable Volume Pipettors

mLINE is Sartorius' most advanced mechanical pipette that offers a unique combination of novel and patented features for effortless accuracy and precision. It is lightweight, comfortable to use, and is recommended by Health & Safety officers.

- Patented volume lock design prevents sampling error
- Ejection collar and tip cone can be removed without tools for easy cleaning and maintenance
- Stepless volume adjustment
- Effortless tip ejection
- Easy to recalibrate
- High accuracy and precision, also in repetitive, long-lasting pipetting
- Excellent ergonomics to protect from injuries with the exceptionnally light pipetting and tip ejection forces



All mLINES include a three-year warranty and are fully autoclavable without recalibration. Unique Optiload System securely seals and loads disposable tips and makes tip ejection effortless. Pipettors are available in 7 volume ranges from 0.1 to 5,000 µL. All but the 3 and 10 µL models can accommodate replaceable tip cone filters to help prevent contamination and damage with thumb activated tip cone filter ejection.

This liquid handling device is designed and manufactured to be used as general purpose laboratory equipment. Before operating it is recommended to read the user manual, which contains useful information e.g. for good pipetting practice.

Dimensions (WxDxH): 280 × 85 × 45 mm

Thomas No.	Description	Qty./Uom
7733Q52	mLINE Mechanical Pipettor, 1-Channel, 0.5-10 µL	1/EA
7733Q54	mLINE Mechanical Pipettor, 1-Channel, 2-20 µL	1/EA
7733Q58	mLINE Mechanical Pipettor, 1-Channel, 10-100 µL	1/EA
7733Q60	mLINE Mechanical Pipettor, 1-Channel, 20-200 µL	1/EA
7733Q64	mLINE Mechanical Pipettor, 1-Channel, 100-1000 µL	1/EA
7733Q68	mLINE Mechanical Pipettor, 1-Channel, 500-5000 µL	1/EA
1228M58	mLINE Mechanical Pipettor, 1-Channel, 1-10 mL	1/EA
7733Q70	mLINE Carousel Stand	1/EA

Hach

HQ430d Benchtop Single Input, Multi-Parameter Meter

Designed for water quality experts, the Hach HQ430d Laboratory Multi-Meter is an advanced laboratory meter that takes the guesswork out of measurements. HQD laboratory meters connect with smart IntelliCAL™ electrodes that automatically recognize the testing parameter, calibration history, and method settings to minimize errors and setup time. The advanced HQD Laboratory Meter is designed to withstand years of continuous lab use. HQD bench meters feature a simple user interface that does not require manuals or training to operate. The HQD digital meter is ideal for any of the following measurement parameters as a pH meter, a mV/RedOx/ORP meter, an Ion Selective (ISE) meter, a Dissolved Oxygen (DO) meter, a Biochemical Oxygen Demand (BOD) meter, a conductivity meter for measuring electrical conductivity, salinity, resistivity, or total dissolved solids (TDS), in wastewater, drinking water or general water quality applications, soil, and food or beverages applications. A wide range of IntelliCAL™ electrodes, cell, probes and sensors are available to perform accurate measurements in any sample media types.

- Intuitive user interface for simple operation, reliable and accurate results
- Trust your measurements - IntelliCAL™ smart probes store all calibrations in the probe
- Enhance data connectivity with easy to read results
- Improve productivity and save laboratory space
- Flexible benchtop meter makes your lab testing of critical water quality parameters more efficient
- Intuitive user interface for simple operation and accurate results
- Trust your measurements - IntelliCAL™ smart probes store all calibrations in the probe
- Enhance productivity with an ultra-bright screen and large font size for easy to read results
- Guided calibration and check standard routines reduce calibration errors while stabilization alerts and visual measurement lock ensure that you can trust the accuracy of the results
- Internal USB ports simplify data transfer, peripherals, and software updates and connection to PCs printer and keyboards
- Calibration history allows quick and easy change out of probes without re-calibrating
- Convenient kit includes everything you need to start testing
- Includes: meter, 4 AA batteries, universal power adapter, USB cable for data transfer, quick start guide and user manual

Thomas No.	Description	Qty./Uom
1184H78	HQ430d Benchtop Single Input, Multi-Parameter Meter - pH, Conductivity, Optical Dissolved Oxygen, ORP, and ISE	1/EA



Visit **ThomasSci.com**

Need a Meter?

Thomas has the meter that will fit your beer and wine making needs.

We carry a variety of meters such as:
Single Input, Multi-Parameter Meter - pH, Conductivity, ORP, ISE and Optical Dissolved Oxygen meters.

Hach

HQ440d Benchtop Dual Input, Multi-Parameter Meter - pH, Conductivity, Optical Dissolved Oxygen, ORP, and ISE

Multiparameter: Plug-and-Play any Two IntelliCAL Probes!



Designed for your water applications, the Hach HQ430d laboratory meter is an advanced meter that takes the guesswork out of measurements. HQd meters connect with IntelliCAL™ probes that automatically recognize the testing parameter, calibration history, and method settings to minimize errors and setup time.

Input channels for simultaneous measurement of pH, Conductivity, Total Dissolved Solid (TDS), Optical Dissolved Oxygen (DO), Biochemical Oxygen Demand (BOD), Oxydo Reduction Potential (ORP/RedOx), Temperature and Ion Selective Electrode (ISE).

- Improve productivity and save workspace
- Guided calibration and check standard routines reduce calibration errors while stabilization alerts and visual measurement lock ensure that you can trust the accuracy of the results
- Enhance productivity with an ultra-bright screen and large font size for easy to read results
- Switching parameters is fast and easy with the HQ440d
- Convenient kit includes everything you need to start testing
- Includes: meter, 4 AA batteries, universal power adapter, USB cable for data transfer, quick start guide and user manual

Thomas No.	Description	Qty./Uom
1188U54	HQ440d Benchtop Dual Input, Multi-Parameter Meter	1/EA

Thermo Scientific Orion Star A213 Dissolved Oxygen Benchtop Meter

Thermo Scientific Orion Star A213 Dissolved Oxygen (DO) Benchtop Meter is the ideal choice for any lab. Get the information you need quickly and easily from the large, backlit graphic LCD display. Informative display shows dissolved oxygen in percent saturation or concentration and temperature along with time, date, sample ID, user ID and calibration information.



For advanced users, features such as stability and averaging options and flash expansion through the USB provide additional options. Anyone can use this meter with its plain language screen prompts, soft keys that update for easy selection and a multilanguage interface that supports English, Spanish, French, Italian, German and Chinese.

- Accurate results are easy with automatic temperature, manual salinity and your choice of automatic or manual barometric pressure compensation
- Non-volatile memory holds up to 2000 data points with time and date stamp
- Easily transfer data and keep meter software up-to-date with the USB and RS232 ports and included data analysis software
- Calibrate using water-saturated air, air-saturated water, a Winkler titration or zero point calibration
- Works with almost every AC power source with the included universal power adapter, or use four AA batteries (sold separately) to run the meter on DC power
- 3 year meter replacement warranty
- Dimensions: 24 cm x 18 cm x 11 cm (9.5 in. x 7.1 in. x 4.3 in.)

Certifications: CE, TUV, FCC Class A limits

Thomas No.	Description	Qty./Uom
1218X43	Star A213 RDO/DO BT Meter with Electrode Stand	1/EA
1218X44	Star A213 RDO/DO BT Meter with Electrode Stand; 083005MD Polarographic DO Probe with 1.5 Meter Cable and Calibration Sleeve; 080513 Probe Maintenance Kit; 970802 BOD Funnel and Stirrer; 080360 BOD Adapter	1/EA
1218X45	Star A213 RDO/DO BT Meter with Electrode Stand; 086030MD AUTO-STIR DO/BOD Probe with 2 Meter Cable; 080514 Polarographic Electrolyte Solution; 080513 Probe Maintenance Kit	1/EA

Mettler Toledo

Densito/DensitoPro Handheld Density Meters

Made for use in the lab and on-the-go, the Densito and DensitoPro are perfect for all applications: from quality control of incoming goods to at-line quality assurance of intermediate or final products.



Temperature compensation factors correct the measurement value to the desired temperature, ensuring accurate results no matter the temperature.

The Densito Pro offers additional RFID and barcode reader.

- These handheld instrument features Densito's bright, color display, excellent visibility both indoors and outdoors
- The built-in electric sampling pump means that filling and emptying the measurement cell is performed completely automatically at the press of the button
- EasyDirect Software offers data management on the PC. Results can be reviewed and filtered, and graphs can be created to monitor samples over time

Thomas No.	Description	Qty./Uom
1158K05	Densito Handheld Density Meter	1/EA
1158K06	DensitoPro Handheld Density Meter	1/EA

Ohaus

Pen pH Meters

After more than a century of perfecting the art of measurement through our durable weighing products, OHAUS precision is now available in a line of pen meters that provide accurate measurement of pH, oxidation-reduction potential (ORP), conductivity, salinity, and total dissolved solids (TDS).



- Simple, fast, straightforward, no-frills operation time and time again
- Durable ABS housing, a protective sensor cap, and automatic shutdown feature that preserves battery life

Thomas No.	Description	Qty./Uom
1185M78	ST10 Pen pH Meter 0.1pH-No Cal	1/EA
1186U99	ST20 Starter Pen Meter, 0 – 14 pH Range, 0.01 pH Resolution	1/EA

Sper Scientific Dissolved Oxygen Pen

- Designed for simple one-hand operation with automatic temperature compensation and calibration to air
- Simultaneously displays dissolved oxygen and temperature readings
- Comes ready to use in a soft carrying case with belt loop, two spare probe heads, electrolyte and 4 AAA batteries. Dim: 8 x 2 x 1 1/2 inch (180 x 40 x 40 mm). Weight: 6 oz (175 g).



Thomas No.	Description	Qty./Uom
1229F18	Dissolved Oxygen Pen	1/EA

Hach

Application Software: Brewery Analysis



The application software LZV942 contains 12 brewery assays that conveniently upload to a DR6000 via USB. Assays are based on published and observed brewing methods according MEBAK and include procedures and calculations for: anthocyanogens, iron, steam volatile phenols, Bitterness Units, Photometric Iodine, Thiobarbituric Acid Number (TAN), free amino nitrogen, Reductones, Vicinal Diketones.

- Keep control of time depending multiple measurements - a timer function alerts about the next step and starts evaluation of multiple samples automatically

Thomas No.	Description	Qty./Uom
1145T30	Application Software Brewery Analysis	1/EA

Thermo Scientific Orion Orion® pH Buffers

Orion pH buffers are manufactured under ISO 9000 quality standards. Buffers are color-coded for ease of use, packaged with buffer/temperature tables for accurate calibrations and NIST traceability.



Thomas No.	Description	Qty./Uom
1226E76	pH 4.01 Buffer, Color Coded Pink, 60 mL	5/PK
4120L75	pH 4.01 Buffer, Color Coded Pink, 475 mL	1/EA
1226E78	pH 7.00 Buffer, Color Coded Yellow, 60 mL	1/EA
4120L80	pH 7.00 Buffer, Color Coded Yellow, 475 mL	5/PK
4120L85	pH 10.01 Buffer, Color Coded Blue, 475 mL	1/EA

Thermo Scientific Orion pH Electrode Solutions

Electrode Storage Solution

- 475 mL plastic bottle
- pH of solution is 6.2 to 7.4
- For short term storage of all electrodes from one day to a week



Electrode Filling Solution

Internal filling solution for Ross-type electrodes (3M KCl). In packages of five 50 mL bottles.

Thomas No.	Description	Qty./Uom
1234J80	Ross pH Electrode Storage Solution, 475 mL	1/EA
1234J81	Electrode Storage Bottle	3/PK
4153W25	Orion pH Electrode Storage Solution, 475 mL	1/EA
4153W50	Orion Reference Fill Solution 3M KCl	5/CS

Hach MEL/MPN Total Coliform and E. coli Laboratory

- Perfect for field or lab analysis
- Contains all equipment and accessories necessary to perform microbiological analysis
- Includes: portable Incubator, portable UV lamp, marker, thermometer and sampling/filtration consumables for 50 tests
- Includes: portable Incubator, portable UV lamp, marker, thermometer and sampling/filtration consumables for 50 tests



This MEL provides all the hardware to carryout the Most Probable Number (MPN) method. In addition to potable water, the MPN method is ideal for waste-water samples and nonpotable samples, because the analyst can accommodate highly turbid samples which would otherwise require filtration. MEL/MPN Total Coliform and E. Coli Laboratory.

Thomas No.	Description	Qty./Uom
1155M46	MEL/MPN Total Coliform and E. coli Laboratory	1/EA

LaMotte Peracetic Acid Kit

This peracetic acid test kit tests for peracetic acid and hydrogen peroxide using the dropper bottle method



- The hydrogen peroxide equivalence is 1 drop = 50 ppm
- The peracetic acid equivalence can be modified to test different concentrations by using a different sample size
- **Applications:** Industrial Water Boiling and Cooling, Water and Wastewater

Thomas No.	Description	Qty./Uom
1230Y77	Peracetic Acid Kit	1/EA

MilliporeSigma HybriScan™D Beer

HybriScan™D Beer is a rapid molecular test system for the detection of all beer-spoiling microorganisms in only one test. Specifically for the detection of all relevant beer spoilage organisms of *genus Lactobacillus*, *Pediococcus*, *Pectinatus* and *Megasphaera*.



- The target molecules of the beer contaminants contained in the sample are captured in a specific microtiter binding plate
- All other unbound sample components are removed by several washing steps, so that only beer-spoiling microbes are detected in a highly specific way. In addition to the capture probe, a detection probe is coupled to the target molecule.
- An enzyme is attached afterwards in a subsequent incubation step
- After several washing steps, reaction with a colour substrate gives a blue colouration, which changes to yellow after the addition of a stop solution
- Comparison is made with the standard solutions contained in the test kit
- Sufficient for 96 reactions

Thomas No.	Description	Qty./Uom
C752R83	HybriScan™D Beer, 96 tests	1/EA

LaMotte BrewLab™ Test Kit

The BrewLab™ test kit for Home Brewers quantifies 6 important test factors. Included is a digital pH meter for monitoring batches from start to finish. Experts agree water conditions affect your final product, so take the mystery out of great beer. Trust LaMotte, the water analysis experts since 1919, to help you control your most important ingredient...water!



Better Chemistry... Better Beer!

6 Essential Test Factors - PLUS a high quality pH Meter (included with Thomas No. C985K37)

- Total Hardness
- Calcium Hardness (Magnesium Hardness)
- Total Alkalinity
- Sulfate
- Chloride
- Sodium

(BrewLab PLUS • CODE #7188-01 (Thomas No. C985K37))

Test Factor	Range	Number of Tests
Total & Calcium Hardness	0-200 ppm* as CaCO ₃	50 at 200 ppm
Alkalinity	0-200 ppm* as CaCO ₃	50 at 200 ppm
Sulfate	0-200 ppm sulfate	50
Chloride	1 drop = 10, 25 ppm	Approx. 80
pH	0.0 - 14.0 pH	unlimited
Sodium	calculation	----

*and higher

BrewLab Basic • CODE #7189-01 (Thomas No. C985K38 - pH Meter not included)

Test Factor	Range	Number of Tests
Total & Calcium Hardness	0-200 ppm* as CaCO ₃	50 at 200 ppm
Total Alkalinity	0-200 ppm* as CaCO ₃	50 at 200 ppm
Sulfate	0-200 ppm sulfate	50
Chloride	1 drop = 10, 25 ppm	Approx. 80
Sodium	calculation	----

*and higher

Thomas No.	Description	Qty./Uom
C985K37	BrewLab Plus	1/EA
C985K38	BrewLab Basic (without pH Meter)	1/EA



Thermo Scientific Heracell™ VIOS 160i CO₂ Incubators


Achieve your next breakthrough. The Thermo Scientific™ Heracell™ VIOS CO₂ incubator is specifically designed to deliver the performance reliability, ease of operation, and value required to support a range of culturing needs from basic research to the demanding, leading-edge applications, so you're ready for whatever comes next. Our CO₂ incubators with pure copper interior chambers provide the ideal in-vitro environment.

Better solutions for optimal cell growth. Get added culturing flexibility with our CO₂ incubators with variable oxygen control (tri-gas).

Specifications (Thomas No. 1105R04)

Chamber Material	100% solid copper
CO ₂ Concentration Range	1 to 20%
CO ₂ Sensor Technology	TC180 sensor
Oxygen Control	Optional 1-21% or 5-90%
Humidity Delivery	Covered integrated water reservoir
Relative Humidity	≥93% at 37°C
Temperature Range (Metric)	Ambient +3° to 55°C
Data Outputs	USB, and optional 4-20mA
Certifications/Compliance	CE, CSA
Dimensions (D x W x H) Interior	22.7 x 18.5 x 23.9 in. (57.6 x 47 x 60.7 cm)
Capacity	5.8 cu. ft., 165 L
Electrical Requirements	120V 50/60 Hz
Dimensions (L x W x H) Exterior	34.6 x 25.1 x 35.4 in. (88 x 63.7 x 90 cm)
Description	Single 165 L incubator, standard model
Net Weight	183 lb, 83 kg

Thomas No.	Description	Qty./Uom
1191X45	Heracell VIOS 160i CO ₂ incubator single chamber, 100% solid copper inner chamber with HEPA filtration, Steri-Run sterilization cycle, TC180 CO ₂ sensor 120V 50/60Hz	1/EA



thermoscientific

Thermo Scientific Heracell VIOS CO₂ Incubators

Designed to achieve your next breakthrough!

- THRIVE Active Airflow Technology
- Advanced in-situ sensor technology
- Choice of accurate and reliable CO₂ sensor technology
- Variable oxygen control
- Condensation free humidification system

Better Solutions for Optimal Cell Growth

Visit ThomasSci.com
Search: 1191X45

Complete Contamination Control

- High-temperature sterilization with push button simplicity
- HEPA Air Filtration
- 100% solid copper

Enhanced Simplicity

- iCAN™ Touchscreen interface
- Optimized chamber design for easy maintenance and monitoring
- Data collection software disc included with each unit.



Thermo Scientific Heracell™ 150i and 240i CO₂ Incubators with Stainless-Steel Chambers

Protect valuable samples while optimizing cell growth. Thermo Scientific™ Heracell™ 150i and 240i CO₂ Incubators with Stainless-Steel Chambers provide the ideal in-vitro environment. Clean, reliable and easy to use, they feature fast recovery characteristics and a convenient touchscreen user-interface.

iCAN™ Touchscreen Control

- Door-mounted for easy accessibility and viewing
- Convenient on-screen user prompts for simplified measurement and control navigation
- Choice of languages
- Changes in culture environment visible on screen logs and usage recording
- Visual monitor alarm

TC or IR CO₂ Sensor

- Standard thermal conductivity (TC) sensor features accurate gas sensor technology
- Infrared (IR) sensor features exclusive split-beam technology for precise CO₂ control in fluctuating temperature and humidity conditions
- Rapid humidity recovery
- Large, directly heated water reservoir
- Recovery times are up to five times faster than conventional water pans
- Water level alarm with audible and visual alerts

O₂ Control with Auto-Cal

- Two O₂ control ranges precisely control oxygen concentration
- Ideal for applications requiring decreased or increased O₂ conditions

Specifications (1105R04)

Chamber Material	Electropolished stainless steel
CO ₂ Concentration Range	0 to 20%
CO ₂ Sensor Technology	TC sensor
Oxygen Control	Not Included
Humidity Delivery	Integrated water reservoir
Relative Humidity	>90% at 37°C
Temperature Range (Metric)	Ambient +3° to 55°C
Data Outputs	RS232
Dimensions (D x W x H) Interior	20.9 x 18.5 x 23.9 in. (53 x 47 x 60.7 cm)
Electrical Requirements	120V 50/60Hz
Description	Dual 150L Stack, 2 x 51026282 with roller base
Net Weight	154 lb, 70kg per chamber

Specifications (1105R07)

Chamber Material	Electropolished stainless steel
CO ₂ Concentration Range	0 to 20%
CO ₂ Sensor Technology	TC sensor
Oxygen Control	Not Included
Humidity Delivery	Integrated water reservoir
Relative Humidity	>90% at 37°C
Temperature Range (Metric)	Ambient +3° to 55°C
Data Outputs	RS232
Dimensions (D x W x H) Interior	20.9 x 18.5 x 23.9 in. (53 x 47 x 60.7 cm)
Electrical Requirements	120V 50/60Hz
Description	Dual 150 L Stack, 2 x 51026282 with roller base
Net Weight	154 lb, 70 kg per chamber

Thomas No.	Description	Qty./Uom
1185R04	HERAccl 150i Direct Heat CO ₂ Incubator, Stainless Steel, dual stack with TC Sensor, high temp decon, 120V 50/60Hz	1/EA
1185R07	CO ₂ Gas Regulator, 2-Stage, for gas tank for HERAccl 150i Direct Heat CO ₂ Incubator	1/EA





PCR

Bio Basic Inc.

Rapid Yeast Genomic DNA Extraction Kit

The kit is designed for rapid small-scale extraction of high quality genomic DNA from yeast. Yeast cell wall is digested by Snailase (or lyticase, zymolyase). Whole cell is lysed by a special buffer and DNA is then precipitated and washed by alcohol. Purified DNA can be used for many downstream applications such as PCR, restriction enzyme digestion, hybridization and other applications.



Thomas No.	Description	Qty./Uom
C861B57	Rapid Yeast Genomic DNA Extraction Kit, 50 Preps	1/EA

GE Healthcare

illustra ExoProStar

Enzymatic PCR clean up technology with illustra Exonuclease I and Alkaline Phosphatase to remove unincorporated primers and dNTPs. For maximum flexibility comes in two separate tubes.



- Enzymes optimized to work together for high efficiency removal of unincorporated primers and nucleotides
- Enzymes provided in two separate tubes; just two simple pipetting steps are needed to prepare the reaction
- Fast 30 minute protocol
- Complete heat inactivation of the enzymes within 15 minutes

Thomas No.	Description	Qty./Uom
C987R64	illustra ExoProStar	1/EA
C987R65	illustra ExoProStar	1/EA
C987R66	illustra ExoProStar	1/EA
C987R67	illustra ExoProStar	1/EA
C987R68	illustra ExoProStar	1/EA

GE Healthcare

illustra Ready-To-Go RT-PCR Beads

Pre-dispensed, freeze-dried beads that include the reagents necessary for one-step reverse transcription-PCR with high sensitivity and reproducibility



- Each lot of RT-PCR Beads is function tested for its ability to generate highly specific PCR products to ensure lot-to-lot reproducibility

Thomas No.	Description	Qty./Uom
C752R68	illustra Ready-To-Go RT-PCR Beads (0.5 mL Tubes)	1/EA
C752R69	illustra Ready-To-Go RT-PCR Beads (0.2 mL Tubes)	1/EA
C752R70	illustra Ready-To-Go RT-PCR Beads (0.2 mL Hinged Tube with Cap)	1/EA

GE Healthcare

illustra NAP Columns

Disposable columns prepacked with Sephadex G-25 DNA Grade which require only gravity to run.



- For rapid and efficient purification of DNA and oligonucleotides (10-mers) in less than 15 minutes by gravity flow
- Useful for small-scale purification, desalting and buffer exchange
- Prepacked with Sephadex G-25 DNA Grade in distilled water containing 0.15% Kathon CG/ICP Biocide
- Available in three sizes depending on sample volume: 0.5 mL (NAP-5), 1 mL (NAP-10) or 2.5 mL (NAP-25)

Thomas No.	Description	Qty./Uom
C987R95	illustra NAP-5 Columns	20/EA
C987R96	illustra NAP-5 Columns	50/EA
C987R97	illustra NAP-10 Columns	20/EA
C987R98	illustra NAP-10 Columns	50/EA
C987R99	illustra NAP-25 Columns	20/EA
C987T00	illustra NAP-25 Columns	50/EA

Accuris Instruments

myGel™ Mini Electrophoresis System



The Accuris myGel™ Mini electrophoresis system includes all of the equipment that you need to get up and running - gel tank, power supply and two casting sets. This gel box/power supply combination is compact and easy to use.

- The safety lid is vented to help dissipate heat generated during electrophoresis, and features a viewing area above the gel
- The myGel™ mini gel box attaches directly to the power supply for a secure connection everytime
- Trays and casting stands for both 10.5 x 6 cm and 5 x 6 cm gels are included with the myGel™
- The smaller tooth combs are compatible with multichannel pipettes
- Casting is quick and easy - just place the tray in the casting stand and pour
- Trays feature a dark contrast strip to help visualize wells while loading and lines that fluoresce under UV and blue light to track progress of the run

Thomas No.	Description	Qty./Uom
1191L34	myGel™ Mini Electrophoresis System, 115V	1/EA
1191L35	myGel™ Mini Electrophoresis System, 230V (includes transformer)	1/EA
1191L36	Gel Casting Stand for 10.5x6 cm gels, includes 2 trays, and 2 combs (22/12 teeth)	1/EA
1191L37	Reversible Combs, 22/12 teeth, for E1101-CS1 Casting Stand	1/EA
1191L38	Gel Casting Stand for 5x6 cm gels, includes 4 trays, and 2 combs (18/10 teeth)	1/EA
1191L39	Reversible Combs, 18/10 teeth, for E1101-CS2 Casting Stand	1/EA

Bioline

MyTaq™ HS Mix



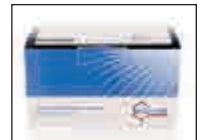
A convenient mastermix containing a new generation of hot-start polymerase that delivers improved specificity, yield, speed and robustness when amplifying targets from any template

- MyTaq™ HS Mix is recommended for PCR assays containing complex and low copy number targets as well as multiplex PCR
- MyTaq™ HS Mix is comprised of MyTaq HS DNA Polymerase and a novel buffer system that deliver very high yield PCR amplification over a wide range of PCR templates

Thomas No.	Description	Qty./Uom
C755F43	MyTaq HS Mix, 2x (200 x 50 µL reactions)	1/EA
C755G95	MyTaq HS Mix, 2x (1000 x 50 µL reactions)	1/EA

Bioline

MyTaq™ Red Mix



A convenient mastermix containing a new generation of hot-start polymerase that delivers improved yield, sensitivity, speed and robustness when amplifying targets from any template

- MyTaq™ HS Red Mix is recommended for PCR assays containing complex and low copy number targets as well as multiplex PCR.

Thomas No.	Description	Qty./Uom
C755G96	MyTaq HS Red Mix, 2x (200 x 50 µL reactions)	1/EA
C755G97	MyTaq HS Red Mix, 2x (1000 x 50 µL reactions)	1/EA

Bioline

MyTaq™ Plant-PCR Kit



MyTaq™ Plant-PCR Kit offers fast, highly-specific, direct PCR from a wide range of plant leaf samples. The novel buffer system circumvents the need for additional PCR stabilizers and traditional purification steps, thereby avoiding a complex extraction process.

- MyTaq™ Plant PCR Kit is recommended for fast, specific and direct PCR from a wide range of plant leaf samples.

Thomas No.	Description	Qty./Uom
C755H02	MyTaq™ Plant-PCR Kit (250 reactions)	1/EA
C755H03	MyTaq™ Plant-PCR Kit (500 reactions)	1/EA

SAFETY

United Scientific Supplies White Lab Coats

Knee-length lab coats made of easy care white cotton blend fabric (65% Polyester, 35% Cotton). Our coats feature one upper left breast pocket, two roomy lower pockets, side slit openings, and an adjustable back belt. A good value combined with comfort and style. Available in both men's and women's sizes.



Thomas No.	Description	Qty./Uom
1223G81	Men's Lab Coat, Medium, Size 40	1/EA
1223G82	Men's Lab Coat, Large, Size 44	1/EA
1223G83	Men's Lab Coat, Extra Large, Size 48	1/EA
1223G84	Women's Lab Coat, Small, Size 36	1/EA
1223G85	Women's Lab Coat, Medium, Size 40	1/EA
1223G86	Women's Lab Coat, Large, Size 42	1/EA

Alpha Pro Tech Critical Cover® SureGrip™ Shoe Covers

- Outstanding anti-skid properties
- Clean and durable
- Suitable for dry environments
- Unmatched performance and overall value
- Serged seams for added strength, traction and a snug fit for safety

SureGrip™ anti-skid properties, provide you with a blend of unmatched performance and overall value

Available in two styles: serged seam and conductive to meet any/all market applications

Thomas No.	Description	Qty./Uom
1230Q97	Shoe Covers, non-skid, serged seams, blue, universal	300/CS
1230Q98	Shoe Covers, non-skid, serged seams, blue, XL	300/CS
1230Q99	Shoe Covers, non-skid, serged seams, blue, 2XL	300/CS



American CleanStat XtraClean™ Basic Economy Polypropylene Shoe Covers

These economical shoe covers are made out of 38 gm polypropylene. Available in plain and non-slip Z-Pattern stamped bottoms, these shoe covers fit most regular shoe styles. Both styles feature a 2-piece traditional surge seam design, while the anti-skid welded version features a 1-piece sea mLess bottom design.

Thomas No.	Description	Qty./Uom
1145F44	XtraClean Basic Polypropylene Shoe Cover, Plain Bottom, Large	300/CS

*See web for additional style/sizing options



American CleanStat XtraClean™ Basic Polypropylene Facemasks

XtraClean™ face masks are made from a 3-layer construction of non-woven polypropylene and feature a flexible (sealed) aluminum nose bridge. These quality facemasks are 7" wide, providing a 99% bacterial filtration efficiency and 99% particulate filtration efficiency.



Thomas No.	Description	Qty./Uom
1147D73	XtraClean Facemask, 3-Layer Polypropylene, Blue, Earloop Style	500/CS
1147F43	XC Basic Polypropylene Bouffant Caps, 21", White	1000/CS
1147H52	XC Basic Polypropylene Bouffant Caps, 21", Blue	500/CS

*See web for additional style/sizing options

American CleanStat XtraClean™ Basic Cleanroom Polypropylene Bouffant Caps

XtraClean™ bouffant caps are made from lightweight, 100% virgin hydro-entangled (spunbonded) polypropylene fabric. A latex-free elastic band helps secure the cap to the user's head. Packed in sealed polyethylene bags and separate inner-case polybag liner, these bouffant caps are ISO Class 5 compatible.

- **Material:** 100% Virgin Polypropylene Hydro-Entangled Fabric
Synthetic Latex Free RubberElastic, 100% Polyester Thread

Thomas No.	Description	Qty./Uom
1147G81	XC Basic Polypropylene Bouffant Caps, 21", White	500/CS
1147D75	XC Basic Polypropylene Bouffant Caps, 21", White	1000/CS
1145F40	XC Basic Polypropylene Bouffant Caps, 21", Blue	500/CS
1147D72	XC Basic Polypropylene Bouffant Caps, 24", White	500/CS
1147D71	XC Basic Polypropylene Bouffant Caps, 24", White	1000/CS
1147F85	XC Basic Polypropylene Bouffant Caps, 24", Blue	500/CS
1145F41	XC Basic Polypropylene Bouffant Caps, 24", Blue	1000/CS
1145F42	XC Basic Polypropylene Bouffant Caps, 24", Green	1000/CS



American CleanStat XtraClean™ Cleanroom Polypropylene Beard Covers

XtraClean™ cleanroom beardcovers, like the bouffant caps, are made from 14gm hydro-entangled polypropylene fabric and have a latex-free elastic band. Packaged in a Class 100 cleanroom environment, the beardcovers are sealed in outer polyethylene bags as well as a separate inner-case, poly-bag liner. Size is universal and the color is white.

Available in either 500 or 1,000 beard covers per case.

- **Material:** 100% Virgin Polypropylene Hydro-entangled Fabric
Synthetic Latex Free Rubber, 100% Polyester Thread

Thomas No.	Description	Qty./Uom
1147F17	XtraClean Beard Covers, Light Weight, White, Spunbound Polypropylene, Non-Latex Elastic Headband; 100 per pack, 5 packs per case (500)	500/CS
1147D74	XtraClean Beard Covers, Light Weight, White, Spunbound Polypropylene, Non-Latex Elastic Headband; 100 per pack, 10 packs per case (1000)	1000/CS



Visit **ThomasSci.com**

for a wide selection of
Lab Coats, Shoe Covers,
Facemasks, Bouffant Caps
and Beard Covers.



Thomas
Scientific

American CleanStat

XtraClean™ XC6000 Microporous Disposable Polypropylene Coveralls

XtraClean™ Microporous Disposable Coveralls are lightweight, strong, durable, comfortable provide an economical alternative to other more expensive materials.

Featuring a front zipper, elastic wrists and ankles, these low cost coveralls are rated Class 1000 and meet ISO Level 7-8 requirements.



Thomas No.	Description	Qty./Uom
1145G00	Coveralls, XtraClean®, Microporous PE Laminate. Elastic Wrists and Ankles, Zipper Front. Exceptionally low cost disposable garment. 25 per case. Size: Small	25/CS
1145G01	Coveralls, XtraClean®, Microporous PE Laminate. Elastic Wrists and Ankles, Zipper Front. Exceptionally low cost disposable garment. 25 per case. Size: Medium	25/CS
1147F87	Coveralls, XtraClean®, Microporous PE Laminate. Elastic Wrists and Ankles, Zipper Front. Exceptionally low cost disposable garment. 25 per case. Size: Large	25/CS
1147F88	Coveralls, XtraClean®, Microporous PE Laminate. Elastic Wrists and Ankles, Zipper Front. Exceptionally low cost disposable garment. 25 per case. Size: X-Large	25/CS
1147F89	Coveralls, XtraClean®, Microporous PE Laminate. Elastic Wrists and Ankles, Zipper Front. Exceptionally low cost disposable garment. 25 per case. Size: 2X-Large	25/CS
1147H54	Coveralls, XtraClean®, Microporous PE Laminate. Elastic Wrists and Ankles, Zipper Front. Exceptionally low cost disposable garment. 25 per case. Size: 3X-Large	25/CS
1145G02	Coveralls, XtraClean®, Microporous PE Laminate. Elastic Wrists and Ankles, Zipper Front. Exceptionally low cost disposable garment. 25 per case. Size: 4X-Large	25/CS
1145G03	Coveralls, XtraClean®, Microporous PE Laminate. Elastic Wrists and Ankles, Zipper Front. Exceptionally low cost disposable garment. 25 per case. Size: 5X-Large	25/CS

American CleanStat

XtraClean™ XC6000 Protective Frocks

XtraClean Microporous Disposable Frocks are lightweight, durable, and comfortable.

Constructed from a higher basis weight polypropylene and coated with a specially formulated polyethylene film laminate, these unique frocks are long lasting, have static dissipative qualities, and create an excellent barrier to most liquids.

Featuring a mandarin collar and elastic wrists, these low cost frocks are rated Class 1000, and suitable for use in ISO Level 7-8 cleanrooms.



Thomas No.	Description	Qty./Uom
1147F18	XtraClean® Cleanroom Frocks, Microporous, Polyethylene Film Laminated Polypropylene, Elastic Wrists, Snap Front, Mandarin Collar, Size: Small, White	30/CS
1147D78	XtraClean® Cleanroom Frocks, Microporous, Polyethylene Film Laminated Polypropylene, Elastic Wrists, Snap Front, Mandarin Collar, Size: Medium, White	30/CS
1147G82	XtraClean® Cleanroom Frocks, Microporous, Polyethylene Film Laminated Polypropylene, Elastic Wrists, Snap Front, Mandarin Collar, Size: Large, White	30/CS
1147D79	XtraClean® Cleanroom Frocks, Microporous, Polyethylene Film Laminated Polypropylene, Elastic Wrists, Snap Front, Mandarin Collar, Size: X-Large, White	30/CS
1147F19	XtraClean® Cleanroom Frocks, Microporous, Polyethylene Film Laminated Polypropylene, Elastic Wrists, Snap Front, Mandarin Collar, Size: 2X-Large, White	30/CS
1147F86	Coveralls, XtraClean®, Microporous PE Microporous. Elastic Wrists and Ankles, Zipper Front. Exceptionally low cost disposable garment. 25 per case. Size: 3X-Large	30/CS

Bradley

Vertical Drench Shower

- Spintec drench shower
- Vertical supply
- Plastic shower head
- Galvanized Steel Pipe with Yellow polyurethane paint
- 1in. NPT Water Supply
- SEI Certified To ANSI Z358.1-2009

WARNING: This product can expose you to chemicals including lead, which are known to the State of California to cause cancer and birth defects or other reproductive harm. For more information go to www.P65Warnings.ca.gov.



Thomas No.	Description	Qty./Uom
1204M52	Spintec Drench Shower, Vertical Supply, Plastic Shower Head, Galvanized Steel Pipe w/ Yellow Polyurethane Paint, 1in. NPT Water Supply, SEI Certified To ANSI Z358.1-2009	1/EA

Justrite

Flammable Liquid Storage Cabinets

- Protects flammable liquids from flash fires, prevents excessive internal temperatures in the event of external fires and contains spilled liquids to prevent fires from spreading
- Features double-wall, 18-gauge steel with 37 mm (1 1/2") insulating airspace
- 8246B09, doors held open by a fusible link that melts at 71°C (160°F), closing door automatically
- Each unit has one shelf, adjustable in 25 mm (1") increments and accommodates a maximum of 15 gallons
- Meets OSHA and NFPA code 30 requirements



Thomas No.	Description	Qty./Uom
8246B05	Safety Cabinet, 12 Gal., 1 Shelf	1/EA
8246B09	Safety Cabinet, Self-Closing, 12 Gal., 1 Shelf	1/EA
1233W07	Safety Cabinet, Self-Closing, Countertop, 4 Gal.	1/EA
1233W08	Safety Cabinet, Manual, Compac, 15 Gal.	1/EA

Thomas®

Universal Spill Kit

- Neutralizes acids and bases
- Color-coded
- Non-toxic
- Safe to handle
- Easy-to-store and Easy-to-use

Ampho-Mag™ is a rapid response powder that safely adsorbs and treats any spill and produces less heat and spattering than any other neutralizer available. This product can be used on acids, bases, organics, hydrocarbons, water reactive liquids, poisons, air reactive liquids, oxidizers, reducing agents and a host of other types of chemicals. Designed to change colors, red is for acid, blue is for base and yellow/green is neutral. It is easy to use and requires no additional training or safety equipment and is safe to handle, requiring no special precautions.



Thomas No.	Description	Qty./Uom
8238N05	Universal Spill Kit	1/EA

Evolution Sorbent Products Hazmat Spills Kits

- Absorb toxic and aggressive chemical spills, including flammable, corrosive and unknown liquids
- Contain high-performance meltblown sorbents made with 100% polypropylene fiber



Thomas No.	Description	Qty./Uom
1208U76	Meltblown 5-Gallon Spill Kits Yellow HazMat	1/EA
1208U77	Meltblown 20-Gallon Polydrums HazMat	1/EA
1208U78	Meltblown 55-Gallon Polydrums HazMat	1/EA
1208U79	Meltblown 95-Gallon Polydrums HazMat	1/EA

North by Honeywell

First Aid Kit Laboratory

Laboratory First Aid Kit Designed for use in classrooms, research or clinical laboratories, this kit contains all of the components necessary to treat common issues found in a laboratory environment.



- Kit is latex free and ANSI Z308.1-2003 compliant
- Includes: (16) 1" x 3" Adhesive Bandages, (1) Eyewash, (4) Eye Pads, (4) Strips, (1) Forceps, (1) Scissor, (1) Instant Cold Pack, (1) Non-Sterile Triangular Bandage, (1) 4" x 4" Water Jel Burn Dressing, (1) 4" Compress Bandage, (2) 1/2" x 2-1/2 yd. Adhesive Tape, (4) 3" x 3" Sterile Gauze Pads, (6) XL Adhesive Bandages, (6) 1/8 oz. Burn Jel

Thomas No.	Description	Qty./Uom
1215E22	First Aid Kit Laboratory	1/EA

NPS

Multi-Purpose Lab Soakers

Spilfyter® Soakers provide absorption protection against spills and cushioning to minimize breakage. Soakers are made with multiple layers of 100% recycled tissue and a plastic poly backing for diaper-like characteristics. Heavy duty models feature durable fabric top.



Thomas No.	Description	Qty./Uom
1233K17	Lab Soaker, Light Duty Roll, 400' x 20"	2/CS
1233K18	Lab Soaker, Light Duty Pad, 20" x 16"	250/CS
1233K19	Lab Soaker, Heavy Duty Roll w / Fabric Top, 200' x 20"	2/CS
1233K20	Lab Soaker, Heavy Duty Pad w / Fabric Top, 20" x 16"	200/CS

American CleanStat

M1 Technology C30L Lite Premium Cleanroom Polycellulose Wipers

The C30L Cleanroom Wiper is a nonwoven, hydro-entangled wiper made of 55% cellulose and 45% polyester and it is lighter weight than it's sister product, the C30 Wiper. It is soft, absorbent and the material is low linting. The extractables are 0.010 for deionized water and 0.073 for isopropyl alcohol.



- This material is outstanding for its absorbency and low values of particulates and non-volatile residues
- The ultra-clean cellulose portion imparts this grade with its high absorbency and body, while the long polyester fibers contribute to dimensional stability, strength and wicking action
- Grade C30L is produced using the process of hydroentanglement and is thus free of chemical binders

Thomas No.	Description	Qty./Uom
1147D01	M1 Technology C30L Cleanroom Polycellulose Lightweight Wipers, 9" x 9"	300/PK
1147C96	Lighter weight and more economical wiper of 55% polyester and 45% cellulose. Soft, absorbent and low linting material, minimal extractables. 150 per pack. Size 12x12	150/PK
1147C98	Lighter weight and more economical wiper of 55% polyester and 45% cellulose. Soft, absorbent and low linting material, minimal extractables. 75 per pack. Size 18x18	75/PK

American CleanStat

M1 Technology Pre-Saturated Polypropylene Cleanroom Wipers

M1 pre-saturated wipes provide very low levels of contamination with a pure polypropylene substrate and added benefit of precise solvent saturation to ensure optimal particle removal, retention, and solvent usage. Comes in a convenient re-sealable pouch to meet various process cleaning applications.



Thomas No.	Description	Qty./Uom
1147G77	Presaturated Polypropylene Non-woven Wipers, 9" x 11", 70% IPA / 30% DI Water	50/PK

Moldex

Mellows® Foam Ear Plugs

Mellows® earplugs are made of extra-soft, extra-light foam. Their tapered shape fits easily in the ear canal, and seals gently and snugly without pressure. They're so comfortable you'll forget you're wearing earplugs.



Soft comfortable fit

Mellows® earplugs are made of extra-soft, extra-light foam. Their tapered shape fits easily in the ear canal, and seals gently and snugly without pressure. They're so comfortable you'll forget you're wearing earplugs.

All-day wear

The low pressure, smaller design of Mellows is perfect for extended periods of wear. Mellows® provide maximum foam comfort with the appropriate protection for mid to high level noise areas.

Features

- Extra-soft, extra-light foam for superior all-day comfort
- High visibility colors make compliance checks quick and easy
- Tapered shape for easy insertion and removal
- Shaped to fit even very small ear canals
- 100% PVC-Free
- Independently tested to ANSI S3.19-1974, NRR 30

Thomas No.	Description	Qty./Uom
1200J97	Mellows®, Uncorded, 200 Pairs per Box	200/BX
1200J98	Mellows®, Corded, 100 Pairs per Box	100/BX

Microflex

MidKnight™ Black Nitrile Gloves

Offers the superior combination of durability and protection against day-to-day hazards in a comfortable nitrile glove



- Powder-free
- Fully textured for enhanced tactile sensitivity and a consistent grip

Black examination glove is designed to mask the toughest of stains while providing the durability, comfort and protection typical of nitrile gloves.

Recommended for:

- Sample taking and processing
- Blending, compounding solids and liquids

Length: 9 1/2 in.; palm thickness: 4.7 mils; finger thickness: 5.5 mils

Thomas No.	Description	Qty./Uom
1229F24	Gloves, Black Nitrile, Extra Small	100/PK, 1000/CS
1229F25	Gloves, Black Nitrile, Small	100/PK, 1000/CS
1229F26	Gloves, Black Nitrile, Medium	100/PK, 1000/CS
1229F27	Gloves, Black Nitrile, Large	100/PK, 1000/CS
1229F28	Gloves, Black Nitrile, Extra Large	100/PK, 1000/CS
1229F29	Gloves, Black Nitrile, 2X-Large	100/PK, 1000/CS

Microflex

Supreno® SE Nitrile Gloves

Designed for exceptional comfort, strength and durability

- No latex sensitivity concerns
- Textured fingertips
- Ambidextrous gloves are 9.4 inches long with a beaded cuff
- Thickness is 3.9 mils at the cuff, 4.7 mils in the palm and 7.1 mils in the textured fingertips



Thomas No.	Description	Qty./Uom
5761Q31	Supreno SE, X-Small	100/BX, 1000/CS
5761Q35	Supreno SE, Small	100/BX, 1000/CS
5761Q39	Supreno SE, Medium	100/BX, 1000/CS
5761Q43	Supreno SE, Large	100/BX, 1000/CS
5761Q47	Supreno SE, X-Large	100/BX, 1000/CS

Kimberly Clark Purple Nitrile* Gloves

- Ambidextrous, 9.5"
- Beaded cuffs to prevent roll-down
- Excellent dexterity and tactile sensitivity with textured fingertips
- Superior quality, AQL 1.5 (exceeds the ASTM 2.5 standard for critical defects or pinholes)



Thomas No.	Description	Qty./Uom
5761R13	Purple Nitrile Exam Gloves, 5.9 Mil, Ambidextrous, 9.5", XS	100/BX, 1000/CS
5761R17	Purple Nitrile Exam Gloves, 5.9 Mil, Ambidextrous, 9.5", Small	100/BX, 1000/CS
5761R21	Purple Nitrile Exam Gloves, 5.9 Mil, Ambidextrous, 9.5", Medium	100/BX, 1000/CS
5761R27	Purple Nitrile Glove from KC-Safeskin. 9.5 inch Length, Textured Fingertip, 5-7 mil thickness	100/BX, 1000/CS
5761R46	Purple Nitrile Exam Gloves, 5.9 Mil, Ambidextrous, 9.5", XL	100/BX, 1000/CS

Kimberly Clark Spring Green Nitrile Powder-Free Exam Glove

- Ambidextrous, 9.5"
- Beaded cuffs to prevent roll-down
- Strong grip (wet or dry), with textured fingertips for dexterity in fine motor skills
- Superior quality, AQL 0.65 (exceeds the ASTM 2.5 standard for critical defects or pinholes)



Thomas No.	Description	Qty./Uom
1190Y71	Spring Green Nitrile Exam Gloves, 4.7 Mil, Ambidextrous, 9.5", XS	200/BX, 2000/CS
1190Y72	Spring Green Nitrile Exam Gloves, 4.7 Mil, Ambidextrous, 9.5", Small	200/BX, 2000/CS
1190Y73	Spring Green Nitrile Exam Gloves, 4.7 Mil, Ambidextrous, 9.5", Medium	200/BX, 2000/CS
1190Y74	Spring Green Nitrile Exam Gloves, 4.7 Mil, Ambidextrous, 9.5", Large	200/BX, 2000/CS
1190Y75	Spring Green Nitrile Exam Gloves, 4.7 Mil, Ambidextrous, 9.5", XL	200/BX, 2000/CS

Imagine a Different Future for Your Waste Stream

RightCycle
by KIMBERLY-CLARK PROFESSIONAL

www.KCProfessional.com/RightCycle

©1997 Trademark of Kimberly-Clark Worldwide, Inc. or its affiliates. Marques de commerce de Kimberly-Clark Worldwide, Inc. ou de ses sociétés affiliées. © KOWW. TREA0B 3/19

National Marker (NMC) Danger, Ear Protection Required In This Area Graphic Sign

Graphical ANSI Signs are the perfect way to alert your employees and guests when a hazard is present in your facility. Keep your facility safe, buy an ANSI sign today and prevent an accident tomorrow.



Thomas No.	Description	Qty./Uom
1215T08	Danger, Ear Protection Required In This Area With Graphic, 10x7, PS Vinyl	1/EA

**See web for additional signage options*

National Marker (NMC) Danger, Eye Protection Required In This Area Graphic Sign

Graphical ANSI Signs are the perfect way to alert your employees and guests when a hazard is present in your facility. Keep your facility safe, buy an ANSI sign today and prevent an accident tomorrow.



Thomas No.	Description	Qty./Uom
1215T16	Danger, Eye Protection Required In This Area With Graphic, 10x7, PS Vinyl	1/EA

**See web for additional signage options*

Uvex XV100 Series Safety Glasses

- 10-base, wrap-around uni-lens for great peripheral vision and protection
- Molded, universal nosepiece for easy fit
- Lightweight design and thin, shaped temples for all-day comfort
- Anti-scratch Hardcoat lenses for maximum durability
- Optional Fog-Ban® anti-fog coating available (Thomas No. 1208Y50)
- Meets ANSI Z87+ (High Impact) standard



Thomas No.	Description	Qty./Uom
1208Y47	Eyewear, Frosted Frame, Clear Lens, Anti-Scratch Coating	10/CS
1208Y50	Eyewear, Frosted Frame, Clear Lens, Fog-Ban Anti-Fog Coating	10/CS

**See web for additional eyewear options*

Protective Industrial Products Bouton® Optical The Scout Visitor Specs

Features

- Polycarbonate unilens
- Over-the-glass design fits over all prescription eyewear
- Molded nose bridge design to fit the vast majority of users
- Indirect vent temples to reduce fogging



Thomas No.	Description	Qty./Uom
1200W90	The Scout Eyewear, Visitor Specs, Clear Temple, Clear Lens, Anti-Scratch	12/PK, 144/CS
1200W91	The Scout Eyewear, Visitor Specs, Gray Temple, Gray Lens, Anti-Scratch	12/PK, 144/CS
1200W92	The Scout Eyewear, Visitor Specs, Clear Temple, Clear Lens, Uncoated	12/PK, 144/CS

Superior Manufacturing (AKRO®) 411 Sof-Tred™ 3/8" Floor Matting

Sof-Tred™ features an embossed pebble-texture top surface that enhances slip resistance while providing increased worker fatigue relief. The PVC closed cell foam construction relieves leg and back discomfort while providing a barrier to cold floors.



Thomas No.	Description	Qty./Uom
1216U21	411 Sof-Tred 3/8" Floor Matting 2' x 3', Black	1/EA
1216U22	411 Sof-Tred 3/8" Floor Matting 3' x 5', Black	1/EA
1216U23	411 Sof-Tred 3/8" Floor Matting 2' x 3', Black	1/EA
1216U24	411 Sof-Tred 3/8" Floor Matting 2' x 3', Black	1/EA



FURNITURE

Thomas®

Polyurethane Medium Bench Height Chairs with Black Nylon Bases

Our ergonomic polyurethane chairs adjust to fit most body types and workstations

- Choose from black rolling, non-marring casters (suitable for both hard and carpeted floors) or black, non-marring bell glides (suitable for both hard and carpeted floors) on a nylon reinforced fiberglass base



Thomas No.	Description	Qty./Uom
1207B41	Polyurethane Medium Bench Height Chair with Black Nylon Base, No Tilt, No Arms, Chrome Foot Ring, Casters	1/EA
1207B42	Polyurethane Medium Bench Height Chair with Black Nylon Base, with Tilt, No Arms, Chrome Foot Ring, Casters	1/EA
1179X38	Polyurethane Medium Bench Height Chair with Black Nylon Base, No Tilt, No Arms, Black Foot Ring, Casters	1/EA
1179X39	Polyurethane Medium Bench Height Chair with Black Nylon Base, No Tilt, No Arms, Black Foot Ring, Glides	1/EA
1179X40	Polyurethane Medium Bench Height Chair with Black Nylon Base, No Tilt, No Arms, Chrome Foot Ring, Glides	1/EA
1179X41	Polyurethane Medium Bench Height Chair with Black Nylon Base, No Tilt, No Arms, No Foot Ring, Casters	1/EA
1179X42	Polyurethane Medium Bench Height Chair with Black Nylon Base, No Tilt, No Arms, No Foot Ring, Glides	1/EA
1179X43	Polyurethane Medium Bench Height Chair with Black Nylon Base, No Tilt, Adjustable Arms, Black Foot Ring, Casters	1/EA
1179X44	Polyurethane Medium Bench Height Chair with Black Nylon Base, No Tilt, Adjustable Arms, Black Foot Ring, Glides	1/EA
1179X45	Polyurethane Medium Bench Height Chair with Black Nylon Base, No Tilt, Adjustable Arms, Chrome Foot Ring, Casters	1/EA
1179X45	Polyurethane Medium Bench Height Chair with Black Nylon Base, No Tilt, Adjustable Arms, Chrome Foot Ring, Casters	1/EA
1179X46	Polyurethane Medium Bench Height Chair with Black Nylon Base, No Tilt, Adjustable Arms, Chrome Foot Ring, Glides	1/EA
1179X47	Polyurethane Medium Bench Height Chair with Black Nylon Base, No Tilt, Adjustable Arms, No Foot Ring, Casters	1/EA
1179X48	Polyurethane Medium Bench Height Chair with Black Nylon Base, No Tilt, Adjustable Arms, No Foot Ring, Glides	1/EA
1179X49	Polyurethane Medium Bench Height Chair with Black Nylon Base, with Tilt, No Arms, Black Foot Ring, Casters	1/EA
1179X50	Polyurethane Medium Bench Height Chair with Black Nylon Base, with Tilt, No Arms, Black Foot Ring, Glides	1/EA
1179X51	Polyurethane Medium Bench Height Chair with Black Nylon Base, with Tilt, No Arms, Chrome Foot Ring, Glides	1/EA
1179X52	Polyurethane Medium Bench Height Chair with Black Nylon Base, with Tilt, No Arms, No Foot Ring, Casters	1/EA
1179X53	Polyurethane Medium Bench Height Chair with Black Nylon Base, with Tilt, No Arms, No Foot Ring, Glides	1/EA
1179X54	Polyurethane Medium Bench Height Chair with Black Nylon Base, with Tilt, Adjustable Arms, Black Foot Ring, Casters	1/EA

*See web for additional options

Eagle Group Stem Caster Carts

Chrome four-shelf cart with patented QuadTruss® design open-grid wire shelves, 63" posts, includes plastic split sleeves & donut bumpers, chrome-plated finish, (2) swivel & (2) swivel/brake 5" stem casters with poly tread. Unit shipped knocked down.



Thomas No.	Description	Qty./Uom
1160Z45	Stem Caster Cart, 4-tier, 36"W x 18"D x 68"H, 4 wire shelves	1/EA
1160Z46	Stem Caster Cart, 4-tier, 48"W x 18"D x 68"H, 4 wire shelves	1/EA
1160Z47	Stem Caster Cart, 4-tier, 60"W x 18"D x 68"H, 4 wire shelves	1/EA
1160Z48	Stem Caster Cart, 4-tier, 36"W x 21"D x 68"H, 4 wire shelves	1/EA
1160Z49	Stem Caster Cart, 4-tier, 48"W x 21"D x 68"H, 4 wire shelves	1/EA
1160Z50	Stem Caster Cart, 4-tier, 60"W x 21"D x 68"H, 4 wire shelves	1/EA
1160Z51	Stem Caster Cart, 4-tier, 36"W x 24"D x 68"H, 4 wire shelves	1/EA
1160Z52	Stem Caster Cart, 4-tier, 48"W x 24"D x 68"H, 4 wire shelves	1/EA
1160Z53	Stem Caster Cart, 4-tier, 60"W x 24"D x 68"H, 4 wire shelves	1/EA

Eagle Group

Stainless Steel Cleanroom Tables with Undershelf

Cleanroom table features heavy gauge type 304 all stainless steel construction, 14 gauge brushed stainless steel top with 1.5" - diameter rolled down edges at front and rear, ends turned down 90° at 1.5" providing for flush installations, patented uni-lok stainless steel gusset system, with solid stainless steel fixed undershelf and 1" adjustable stainless steel bullet feet. Includes stainless steel assembly hardware. Shipped knocked-down.



Thomas No.	Description	Qty./Uom
1160Z54	Cleanroom Table, with Brushed Stainless Steel Top and Solid Stainless Steel Fixed Undershelf, 24"W x 24"L	1/EA
1160Z55	Cleanroom Table, with Brushed Stainless Steel Top and Solid Stainless Steel Fixed Undershelf, 24"W x 36"L	1/EA
1160Z56	Cleanroom Table, with Brushed Stainless Steel Top and Solid Stainless Steel Fixed Undershelf, 24"W x 48"L	1/EA
1160Z57	Cleanroom Table, with Brushed Stainless Steel Top and Solid Stainless Steel Fixed Undershelf, 24"W x 60"L	1/EA
1160Z58	Cleanroom Table, with Brushed Stainless Steel Top and Solid Stainless Steel Fixed Undershelf, 24"W x 72"L	1/EA
1160Z59	Cleanroom Table, with Brushed Stainless Steel Top and Solid Stainless Steel Fixed Undershelf, 24"W x 84"L	1/EA
1160Z60	Cleanroom Table, with Brushed Stainless Steel Top and Solid Stainless Steel Fixed Undershelf, 24"W x 96"L	1/EA
1160Z61	Cleanroom Table, with Brushed Stainless Steel Top and Solid Stainless Steel Fixed Undershelf, 30"W x 30"L	1/EA
1160Z62	Cleanroom Table, with Brushed Stainless Steel Top and Solid Stainless Steel Fixed Undershelf, 30"W x 36"L	1/EA
1160Z63	Cleanroom Table, with Brushed Stainless Steel Top and Solid Stainless Steel Fixed Undershelf, 30"W x 48"L	1/EA
1160Z64	Cleanroom Table, with Brushed Stainless Steel Top and Solid Stainless Steel Fixed Undershelf, 30"W x 60"L	1/EA
1160Z65	Cleanroom Table, with Brushed Stainless Steel Top and Solid Stainless Steel Fixed Undershelf, 30"W x 72"L	1/EA

*See web for additional options

Laboratory Furniture

The Complete Solution

From Design > Installation

Thomas Scientific

ThomasSci.com/Furniture



CHEMICALS



Hardy Diagnostics, Inc. manufactures and distributes laboratory and microbiology supplies for clinical, industrial, and molecular

biology research laboratory applications. Its product line includes rapid test kits, prepared media (plates, tubes, bottles, and flasks), and dehydrated culture media in the powder form). Culture media is used to detect and identify pathogenic microorganisms, such as *E. coli*, *Candida*, *Salmonella*, *Staphylococcus*, *Listeria*, and *Streptococcus*. Over 2,700 different products manufactured by Hardy are used in the microbiology laboratory.

Microbiological Media

Thomas No.	Mfg. No.	Description	Qty./Uom
C752R71	C9250	Universal Beer Agar (UBA), CRITERION Dehydrated Culture Media, Mylar zip-pouch to make 2L	1/EA
C752R72	C9251	Universal Beer Agar (UBA), CRITERION Dehydrated Culture Media, 500gm wide-mouth bottle	1/EA
C752R73	C9253	Universal Beer Agar (UBA), CRITERION Dehydrated Culture Media, 10kg bucket	1/EA
C752R74	SRK100	EnviroTrans Barney Miller Broth (swab not included), 5 mL tube	20/PK
C752R75	G93	Barney Miller Medium, 15 x 60 mm plate	10/PK
C860G53	ETB100	Compact Dry ETB, 25 packs of 4 plates	100/PK
C860G13	TPC100	Compact Dry TC, 25 packs of 4 plates	100/PK
C860G14	YM100	Compact Dry YM, 25 packs of 4 plates	100/PK
C814C83	EC100	CompactDry™ EC, 25 packs of 4 plates	100/PK
C814M68	XSA100	CompactDry X-SA, <i>Staphylococcus aureus</i> , 100 trays per box	100/PK
1756U26	D590	Dilu-Lok II, Butterfield's Buffer, dilution blank, 90 mL fill, 145 mL polypropylene bottle with hinged cap	50/CS
1756U28	D599	Dilu-Lok II, Butterfield's Buffer, dilution blank, 99 mL fill, 145 mL polypropylene bottle with hinged cap	50/CS
1756U30	D290	Peptone Water 0.1%, 90 mL HDx, 145 mL DL btl, GI	50/CS
1756U32	D299	Peptone Water 0.1%, 99 mL, 145 mL DL btl, GI	50/CS
1188R96	G35	MacConkey Agar, 15x100 mm Plate	10/PK
C838P15	W51	Nutrient Agar Plate, deep fill, 15x100 mm plate	10/PK
C838P16	W60	Potato Dextrose Agar, USP, deep fill, 15x100 mm plate	10/PK
C838P17	W70	Sabdex (Sabouraud Dextrose) Agar, USP, 15x100 mm plate	10/PK
C838N09	C7341	Yeast Extract, 500 g	1/EA
C838N10	C7342	Yeast Extract, 2 kg	1/EA
C838N11	C7343	Yeast Extract, 10 kg	1/EA
C851E84	C6461	Nutrient Agar, 500 g	1/EA
C855E39	W64	Tryptic Soy Agar (TSA), USP, 26 mL, 15 x 100 mm Plate	10/PK
C859T22	P34	Tryptic Soy Agar (TSA) with Lecithin and Tween 80, USP, contact plate with friction lid	10/PK
C838L90	C5031	APT Agar, 500 g	1/EA
C838L93	C5081	Baird Parker Agar Base, 500 g	1/EA
C838L94	C5082	Baird Parker Agar Base, 2 kg	1/EA
C838L96	C5121	Brain Heart Infusion Agar, 500 g	1/EA
C838L97	C5122	Brain Heart Infusion Agar, 2 kg	1/EA
C838M04	C5211	Bismuth Sulfite Agar, 500 g	1/EA
C838M08	C5321	CRITERION Buffered Peptone Water, 500 g	1/EA
C838M24	C5781	Fraser Broth Base, 500 g	1/EA
C838M25	C5782	Fraser Broth Base, 2 kg	1/EA
C838M38	C5981	Lauryl Tryptose Broth, 500 g	1/EA
C846A57	C5982	Lauryl Tryptose Broth, 2 kg	1/EA
C838M41	C6051	CRITERION LBS Agar, 500 g	1/EA

Microbiological Media (continued)

Thomas No.	Mfg. No.	Description	Qty./Uom
C931M61	C6052	CRITERION LBS Agar, 2 kg	1/EA
C931M62	C6053	CRITERION LBS Agar, 10 kg	1/EA
C838M43	C6131	MacConkey Agar, 500 g	1/EA
C838M44	C6132	MacConkey Agar, 2 kg	1/EA
C838M45	C6133	MacConkey Agar, 10kg	1/EA
C838M58	C6811	Nutrient Broth, 500 g	1/EA
C838M59	C6472	Nutrient Broth, 2 kg	1/EA
C851E84	C6461	Nutrient Agar, 500 g	1/EA
C931M64	C6621	CRITERION Potato Dextrose Agar, 500 g	1/EA
C931M65	C6622	CRITERION Potato Dextrose Agar, 2 kg	1/EA
C931M66	C6811	CRITERION Sabdex (Sabouraud Dextrose) Agar, 500 g	1/EA
C931M67	C6612	CRITERION Sabdex (Sabouraud Dextrose) Agar, 2 kg	1/EA
C931M68	C7561	Sabdex (Sabouraud Dextrose) Broth, 500 g	1/EA
C838N25	C7562	Sabdex (Sabouraud Dextrose) Broth, 2 kg	1/EA
C931N13	680494-1G	4-Bromophenylboronic acid n-butylidethan 1 g, UN 2811 6.1/pg 3	1/EA
C931M65	C6622	CRITERION Potato Dextrose Agar, 2 kg	1/EA
C931M66	C6811	CRITERION Sabdex (Sabouraud Dextrose) Agar, 500 g	1/EA
C931M67	C6612	CRITERION Sabdex (Sabouraud Dextrose) Agar, 2 kg	1/EA
C931M68	C7561	Sabdex (Sabouraud Dextrose) Broth, 500 g	1/EA
C838N25	C7562	Sabdex (Sabouraud Dextrose) Broth, 2 kg	1/EA
C931N13	680494-1G	4-Bromophenylboronic acid n-butylidethan 1g, UN 2811 6.1/pg 3	1/EA
C931M65	C6622	CRITERION Potato Dextrose Agar, 2 kg	1/EA
C931M66	C6811	CRITERION Sabdex (Sabouraud Dextrose) Agar, 500 g	1/EA
C931M67	C6612	CRITERION Sabdex (Sabouraud Dextrose) Agar, 2 kg	1/EA
C931M68	C7561	Sabdex (Sabouraud Dextrose) Broth, 500 g	1/EA
C838N25	C7562	Sabdex (Sabouraud Dextrose) Broth, 2 kg	1/EA
C931N13	680494-1G	4-Bromophenylboronic acid n-butylidethan 1 g, UN 2811 6.1/pg 3	1/EA



RICCA CHEMICAL COMPANY is the leading manufacturer of analytical testing solutions and standards in North America. Built on the commitment to consistently deliver

exceptional quality backed with superior service, we offer the largest product offering of ready-to-use analytical solutions and extensive custom manufacturing capabilities. Ricca Chemical's robust system, breadth of line and custom capabilities get you the right products when you need them.

Stains & Dyes

Thomas No.	Mfg. No.	Description	Pkg. Size
C998P58	4850-4	Methylene Blue, 1% w/v	120 mL
C998P59	4850-16	Methylene Blue, 1% w/v	500 mL

Reagents

Thomas No.	Mfg. No.	Description	Qty./Uom
C415C45	3973-32	Iodine, 0.020 Normal (N/50)	1/EA
C027B28	7450-32	Sodium Hydroxide, 1.00 N 1 L	1/EA
C000M50	8170-32	Sulfuric Acid, 25% aq. Sol., 1 L UN2793	1/EA
C864T43	9150-1	Water, Deionized 4 L	1/EA, 4/CS
C999S66	2546.70-1	Reagent Alcohol, 70% (v/v) 4 L UN1987	1/EA
C998Y89	8371-32	Tartaric Acid, 10% w/v 1 L	1/EA



pH Buffers

Thomas No.	Mfg. No.	Description	Pkg. Size
4120R50	1501-16	Color-Coded pH Buffer, Red, Poly bottle	500 mL
4120R52	1501-32	Color-Coded pH Buffer, Red, Poly bottle	1 L
4120R53	1501-1CT	Color-Coded pH Buffer, Red, Cubitainer®	4 L
4120R56	1551-16	Color-Coded pH Buffer, Yellow, Poly bottle	500 mL
4120R58	1551-32	Color-Coded pH Buffer, Yellow, Poly bottle	1 L
4120R59	1551-1CT	Color-Coded pH Buffer, Yellow, Cubitainer®	4 L
4120R62	1601-16	Color-Coded pH Buffer, Blue, Poly bottle	500 mL
4120R64	1601-32	Color-Coded pH Buffer, Blue, Poly bottle	1 L
4120R65	1601-1CT	Color-Coded pH Buffer, Blue, Cubitainer®	4 L

Acidity Testing

Thomas No.	Mfg. No.	Description	Qty./Uom
C716D60	7350-32	Sodium Hydroxide, 0.100 N (N / 10) 1 L	1/EA
C716D64	7350-2.5	Sodium Hydroxide, 0.100 N (N / 10) 10 L	1/EA
C716D66	7350-5	Sodium Hydroxide, 0.100 N (N / 10) 20 L	1/EA
C716D62	7350-1	Sodium Hydroxide, 0.100 N (N / 10) 4 L	1/EA
0805A12	5620-32	Phenolphthalein, 1%/95% Alcohol 1 L	1/EA
C999S52	5620-4	Phenolphthalein, 1%/95% Alc 120 mL UN1987	1/EA
C999S53	5620-1	Phenolphthalein, 1%/95% Alc 4 L UN1987	1/EA
C999S54	5620-16	Phenolphthalein, 1%/95% Alc 500 mL UN1987	1 L
C998R18	5870-1	Potassium Acid Phthalate, 0.05 N 4 L	1/EA
C604H30	5870-16	Potassium Acid Phthalate, 0.05N Solution (APHA), 500 mL	1/EA
C604H32	5870-32	Potassium Acid Phthalate, 0.05N Solution (APHA), 1L	1/EA



MilliporeSigma is a leading Life Science and High Technology company whose biochemical, organic chemical products,

kits and services are used in scientific research, including genomic and proteomic research, biotechnology, pharmaceutical development, the diagnosis of disease and as key components in pharmaceutical, diagnostics and high technology manufacturing. They provide scientists and engineers with best-in-class lab materials, technologies and services. With the 2015 combination of EMD Millipore and Sigma-Aldrich, they now have a broad portfolio of 300,000 products and an expanded global footprint

Standards, Acids, Antibiotics

Thomas No.	Mfg. No.	Description	Pkg. Size
C909C82	N3503-5MU	SIGMA Nystatin	5 MU
C909C83	N3503-25MU	SIGMA Nystatin	25 MU
C979Q16	T400-25G	ALDRICH DL-Tartaric acid, ReagentPlus®, 99%	25 g
C979Q17	T400-100G	ALDRICH DL-Tartaric acid, ReagentPlus®, 99%	100 g
C979Q18	T400-500G	ALDRICH DL-Tartaric acid, ReagentPlus®, 99%	500 g
C988C50	95280-1L	FLUKA Water, purified water (Aqua Purificata), Ph Eur	1 L
C989D63	46401-100MG-R	FLUKA Cycloheximide, PESTANAL®, analytical standard	100 mg
C989D64	46401-U	FLUKA Cycloheximide, PESTANAL®, analytical standard	1 mL
C998Y89	8371-32	Tartaric Acid, 10% w/v	1 L
C998Y90	8371-16	Tartaric Acid, 10% w/v	500 mL



With a presence in more than 140 countries HiMedia is amongst the top three brands in microbiology in the world. HiMedia,

a company established by professionals and technologists for manufacturing high quality culture media for microbiology. They have the broadest range of Vegetable Hydrolysate based microbiology culture media (HiVeg™), in the world. With firm commitment to excellence in work Culture and products, HiMedia has its own in-house bulk raw materials manufacturing plant. This enables them to deliver consistent quality products that conform to ISO 9001:2015 and ISO 13485:2012 and WHO: GMP. They also honour custom manufacturing requests for small product quantities

Microbiological Media

Thomas No.	Mfg. No.	Description	Pkg. Size
C992B20	FD057-5VL	TTC Solution 1%	5 x 10 mL vials
C992B21	FD057-5XSVL	TTC Solution 1%	25 x 10 mL vials

Agar Media

Thomas No.	Mfg. No.	Description	Pkg. Size
C979X84	M058-500G	Actidione Agar Base w/out Actidione®	500 g
C977C72	M400-500G	Actidione Agar Base w/ Actidione	500 g
C977K00	M642-500G	Lysine Medium Base	500 g
C983U00	FD123-5VL	50% Potassium Lactate	5 x 10 mL vials
C978Z32	M253-500G	Malt Agar	500 g
C978U84	M1605-500G	Modified NBB Agar (Pedi-Lacto Selective Beer Agar)	500 g
C978T01	M1483-500G	Universal Beer Agar, Modified	500 g
C977D08	M415-500G	Universal Beer Agar (UB Agar)	500 g
C978E06	M115-500G	WL Nutrient Medium	500 g
C978B28	M1060-500G	WL Differential Agar	500 g

Liquid Media

Thomas No.	Mfg. No.	Description	Pkg. Size
C975C81	M978-500G	Anaerobic Fermentation Media Base	500 g
C975A20	M885-500G	Andrade Peptone Water	500 g
C975A74	M909-500G	Andrade Peptone Water w/ Meat Extract	500 g
C977C75	M401-500G	Blue Agar	500 g
C977K54	M676-500G	Bromo Cresol Purple Broth Base (Yeast Fermentation Broth Base)	500 g
C979W92	M028-500G	Peptone Water	500 g
C978M29	M1332-500G	Universal Liquid Medium, Modified	500 g
C978B28	M1060-500G	WL Differential Agar	500 g
C977C96	M410-500G	WL Differential Broth	500 g
C979X65	M050-500G	WL Nutrient Broth	500 g
C977B16	M333-500G	Wort Broth	500 g

Coliforms

Thomas No.	Mfg. No.	Description	Pkg. Size
C979W86	M026-500G	Fluid Lactose Medium	500 g
C992B88	M081-500G	MacConkey Agar with 0.15% Bile Salts, CV and NaCl	500 g
C992B94	M083-500G	MacConkey Broth Purple w/ BCP	500 g
C978L88	M1316-500G	Super Broth	500 g
C977C96	M410-500G	WL Differential Broth	500 g
C979X65	M050-500G	WL Nutrient Broth	500 g
C977B16	M333-500G	Wort Broth	500 g



Lactobacilli/Yeasts

Thomas No.	Mfg. No.	Description	Pkg. Size
C978Q39	M1384-500G	Lactic Acid Bacteria Selective Broth Base (Raka Ray No. 3 Broth Base)	500 g
C983T23	FD055-SVL	Lactic Supplement	5 x 10 mL vials
C978C18	M1087-500G	Lactic Bacteria Differential Agar	500 g
C978C15	M1086-500G	Lactic Bacteria Differential Broth	500 g
C978M32	M1333-500G	Lee's Multidifferential Agar	500 g
C992D37	M609-500G	Litmus Milk	500 g
C977K00	M642-500G	Lysine Medium Base	500 g
C983U00	FD123-SVL	50% Potassium Lactate	5 x 10 mL vials
C978T45	M1504-500G	M-BCG Yeast and Mold Agar	500 g
C978D45	M1130-500G	M-BCG Yeast and Mold Broth	500 g
C977J97	M641-500G	MRS Agar (Lactobacillus MRS Agar)	500 g
C977J91	M639-500G	Oxytetra Glucose Yeast Agar Base	500 g
C983R94	FD032-SVL	Oxytetra Selective Supplement	5 x 10 mL vials
C983R95	FD032-SXSVL	Oxytetra Selective Supplement	25 x 10 mL vials
C978L67	M130-500G	Rogosa SL Agar	500 g
C977J94	M640-500G	Rose Bengal Chloramphenicol Agar	500 g
C978M26	M1331-500G	SCHWARZ Differential Medium	500 g
C976Y80	M829-500G	Tomato Juice Medium Base	500 g
C983T70	FD098-SVL	Lactobacilli Supplement	5 x 10 mL vials
C983T71	FD098-SXSVL	Lactobacilli Supplement	25 x 10 mL vials
C977D08	M415-500G	Universal Beer Agar (UB Agar)	500 g
C978T01	M1483-500G	Universal Beer Agar, Modified	500 g
C978M29	M1332-500G	Universal Liquid Medium, Modified	500 g
C978B28	M1060-500G	WL Differential Agar	500 g
C977C96	M410-500G	WL Differential Broth	500 g
C979X65	M050-500G	WL Nutrient Broth	500 g
C978E06	M115-500G	WL Nutrient Medium	500 g
C977D17	M424-500G	Yeast Malt Agar (YM Agar) (ISP Medium No. 2)	500 g

**Millipore
Sigma**

At MilliporeSigma, we provide scientists and engineers with best-in-class lab materials, technologies and services. With the 2015 combination of EMD Millipore and Sigma-

Aldrich, we now have a broad portfolio of 300,000 products, an expanded global footprint and an industry-leading eCommerce platform.

For Yeast Growing - Beer

Thomas No.	Mfg. No.	Description	Qty./Uom
C919P03	84605-500G	SD Agar for Microbiology 500 g	1/EA
C901Y97	Y1250-250G	Yeast Nitrogen Base with Amino Acids 250 g	1/EA
C901Y84	Y0626-250G	Yeast Nitrogen Base without Amino Acids 250 g	1/EA
C901Y85	Y0626-1KG	Yeast Nitrogen Base without Amino Acids 1 kg	1/EA
C987Q80	Y1751-20G	SIGMA Yeast Synthetic Drop-out Medium Supplements, without histidine, 20 g	1/EA
C987Q82	Y2001-20G	SIGMA Yeast Synthetic Drop-out Medium Supplements, without histidine, leucine, tryptophan and uracil, 20 g	1/EA
C987Q78	Y1376-20G	SIGMA Yeast Synthetic Drop-out Medium Supplements, without leucine, 20 g	1/EA

For Yeast Growing - Beer (continued)

Thomas No.	Mfg. No.	Description	Qty./Uom
C987Q70	Y0750-20G	SIGMA Yeast Synthetic Drop-out Medium Supplements, without leucine and tryptophan, 20 g	1/EA
C987Q79	Y1501-20G	SIGMA Yeast Synthetic Drop-out Medium Supplements, without uracil, 20 g	1/EA
C901Z11	Y1771-20G	YEAST SYNTHETIC DROP-OUT MEDIUM SUPP 20 g	1/EA
C901Z12	Y1896-20G	YEAST SYNTHETIC DROP-OUT MEDIUM SUP 20 g	1/EA
C901Z13	Y2021-20G	YEAST SYNTHETIC DROP-OUT MEDIUM SUPP 20 g	1/EA
C901Z14	Y2146-20G	YEAST DROP-OUT MEDIUM W/O HLW 20 g	1/EA
C987Q77	Y1500-250G	YPD Aga, 250 g	1/EA
C901Z02	Y1500-1KG	YPD AGAR 1 kg	1/EA
C987Q75	Y1375-250G	SIGMA YPD Broth, for microbiology, 250 g	1/EA
C987Q76	Y1375-1KG	SIGMA YPD Broth, for microbiology, 1 kg	1/EA

Solvents

Thomas No.	Mfg. No.	Description	Qty./Uom
C990Q70	34863-1L	Riedel-de Haen 2-Propanol CHROMASOLV®, 99.9%, 1 L	1/EA
C001X81	AX0145P-6	Acetonitrile HPLC Poly 1 L UN1648	1/EA
C001F00	MX0475P-6	Methanol HPLC Polycrtd 1 L UN1230	1/EA, 6/CS
C973V04	270733-4L	Water, for HPLC, 4 L	1/EA

Standards

Thomas No.	Mfg. No.	Description	Qty./Uom
C047E12	PAS1KN-100	Arsenic ICAP Standard, 1000 ppm As (Arsenic In 3% Nitric Acid), 100 mL	1/EA
C203E12	PCU1KN-100	Copper ICAP Standard, 1 mL = 1 mg Cu, 1000 ppm Cu, Copper In 3% Nitric Acid	1/EA
C442B12	PPB1KN-100	Lead ICAP Standard, 1 mL = 1 mg Pb, 1000 ppm Pb, Lead In 3% Nitric Acid, 10	1/EA



Innovators in Water Technology Since 1985

SpectroPure® proudly presents the finest water purification systems and equipment available.

Our products are produced in a dedicated manufacturing facility using only the highest quality components and innovative designs.

Standards

Thomas No.	Mfg. No.	Description	Qty./Uom
C858E76	S8399000-100N	Sodium ICP Standard, 1000 ppm Na in 3% HNO ₃ , 100 mL	1/EA

Visit **ThomasSci.com**
for all your
chemistry needs.

**Thomas
Scientific**



30

