

Lab Supplies & Consumables Catalog





Thomas Scientific's labForce® brand is the preferred choice for scientists who strive for efficiency in attaining the most accurate results, while conducting research and experiments without breaking the bank. All labForce® consumable products are manufactured to Thomas Scientific's strict quality standards under ISO 9001 certifications. LabForce® branded products are used in multiple industries including, but not limited to, Academia, Biotech, Pharmaceutical, Industrial, Semi-Conductor, Bioprocessing, Cannabis, Food, Beverage, Clinical and Molecular Diagnostics.

Thomas Scientific is committed to the development and expansion of its laboratory supplies and consumables portfolio. New product designs are in development to support our scientific community. If you are unable to find the exact product or specifications you need in this product guide, search our entire line of over 400,000 lab supplies and consumables at www.ThomasSci.com or contact your local Thomas Scientific Laboratory Specialist.

Table of Contents

Lab Supplies and Consumables

Liquid Handling: Pipette Tips

- Sharp Elite™ Pgs 3-4
- Sharp Classic™Pg 5
- Sharp Elite™ LTS® CompatiblePg 6

Liquid Handling: Pipettors

- Single, Motorized & Multi-Channel.....Pg 7
- Pipettor Stands & Racks.....Pg 8

PCR Consumables:

- Amplifyt™ PCR Plate Compatibility..... Pgs 9-11
- PCR: PlatesPg 12
- PCR: Plates & SealsPg 13
- PCR: Strip TubesPg 14
- PCR: Tubes & Caps.....Pg 15
- PCR: Deep Well Plates.....Pg 16

Cell Culture Supplies:

- Serological Pipettes.....Pg 17
- Petri Dishes, Plates, FlasksPg 18
- Parafilm Box Top DispenserPg 19
- Premium Cell StrainerPg 19
- Flow Tubes™Pg 20

Sample Storage:

- Cryovials.....Pg 21
- Storage Racks.....Pg 22
- Microcentrifuge Tubes.....Pg 23
- Centrifuge TubesPg 24
- Screw Cap TubesPg 25
- Screw Cap Tube Assemblies.....Pg 26
- Freezer Boxes.....Pg 27

Benchtop Supplies:

- Tube Racks.....Pg 28
- Vials & Racks.....Pg 29
- Laboratory Wipes.....Pg 30
- Nitrile Gloves.....Pg 31
- Wash Bottles.....Pg 32

Bottles:

- BottlesPgs 33-36
- Boston RoundPg 37
- Packer BottlesPg 38

Jars & Jugs.....Pg 39

Carboys.....Pg 40

Weigh Boats, Dishes.....Pgs 41-42

Accessories.....Pg 43

Erlenmeyer Flasks.....Pg 44

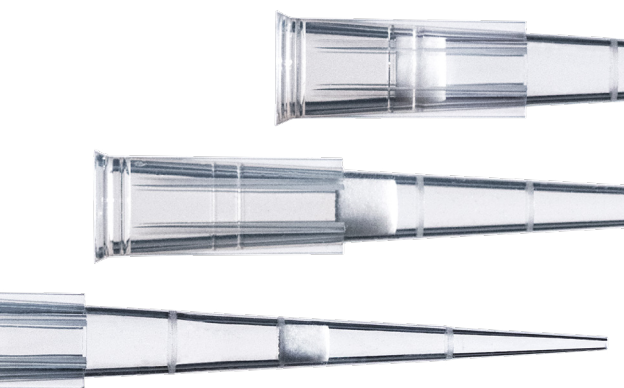
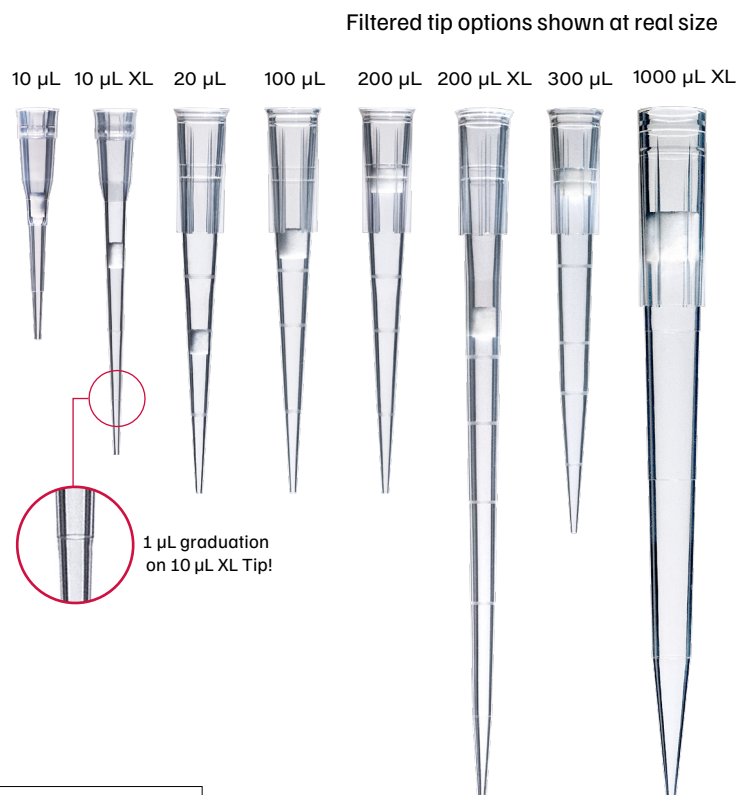


Low-Retention Pipette Tips

- Low fluid retention
- Minimize sample loss
- Universal soft fit
- Fine point tip for faster liquid release
- Certified DNase, RNase, and pyrogen free

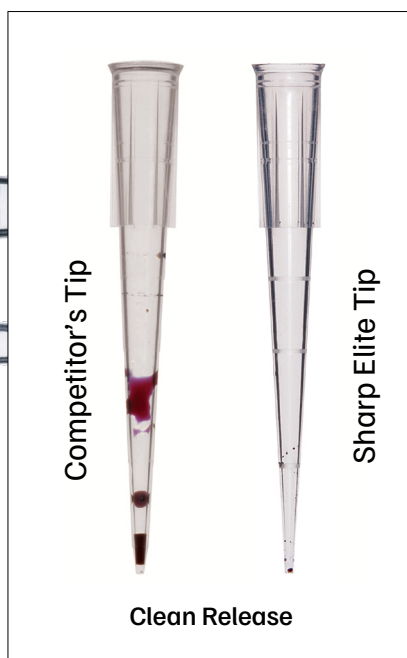
Graduations

10 μ L: 2 & 10 μ L
 10 μ L XL: 1, 2, & 10 μ L
 20 μ L: 10 μ L
 100 μ L: 10, 50, & 100 μ L
 200 μ L: 10, 50, & 100 μ L
 200 μ L XL: 10, 50, 100, 150 & 200 μ L
 300 μ L: 10, 50, 100, & 200 μ L
 1000 μ L XL: 100, 500, & 1000 μ L



Barrier Tips

Filtered Pipette Tips offer an extra level of confidence and control by providing a hydrophobic, non-absorbing barrier between the pipettor and the sample.



Sharp Elite pipette tips incorporate a specially-formulated resin to guarantee less fluid retention and deliver the highest level of liquid handling performance. Thinner walls and finely tapered tip construction eliminate the need to touch off and improves liquid release.



A Superior Rack

- Racks are labeled with volume and lot information for easy identification.
- Plastic rack labels are autoclavable and 100% recyclable.
- Branding on rack lids is permanently bonded—no yellowing or bubbling with autoclaving.

Pipette Tips



Low-Retention Pipette Tips



Barrier Tips, Sterile, Racked

Thomas No.	Volume	Quantity
1149J69	10 µL	960 Tips/Pk, 4800 Tips/Cs
1149J70	10 µL XL	960 Tips/Pk, 4800 Tips/Cs
1149J71	20 µL	960 Tips/Pk, 4800 Tips/Cs
1149J88	100 µL	960 Tips/Pk, 4800 Tips/Cs
1149J72	200 µL	960 Tips/Pk, 4800 Tips/Cs
1138W95	200 µL XL	960 Tips/Pk, 4800 Tips/Cs
1149J73	300 µL	960 Tips/Pk, 4800 Tips/Cs
1145N16	1000 µL XL	960 Tips/Pk, 3840 Tips/Cs

Racked Tips

Thomas No.	Volume	Quantity
1149J90	10 µL	960 Tips/Pk, 4800 Tips/Cs
1149J93	10 µL XL	960 Tips/Pk, 4800 Tips/Cs
1149K10	200 µL	960 Tips/Pk, 4800 Tips/Cs
1138M55	200 µL XL	192 Tips/Pk, 960 Tips/Cs
1138M56	300 µL	960 Tips/Pk, 4800 Tips/Cs
1145N14	1000 µL XL	960 Tips/Pk, 3840 Tips/Cs

Sterile, Racked Tips

Thomas No.	Volume	Quantity
1149J91	10 µL	960 Tips/Pk, 4800 Tips/Cs
1148B42	10 µL XL	960 Tips/Pk, 4800 Tips/Cs
1148F34	200 µL	960 Tips/Pk, 4800 Tips/Cs
1138W98	200 µL XL	192 Tips/Pk, 960 Tips/Cs
1148B83	300 µL	960 Tips/Pk, 4800 Tips/Cs
1145N15	1000 µL XL	960 Tips/Pk, 3840 Tips/Cs



Bulk Tips

Thomas No.	Volume	Quantity
1149J97	10 µL	1000 Tips/Pk, 10000 Tips/Cs
1148B39	10 µL XL	1000 Tips/Pk, 10000 Tips/Cs
1149J98	200 µL	1000 Tips/Pk, 20000 Tips/Cs
1148F60	300 µL	1000 Tips/Pk, 10000 Tips/Cs
1145N12	1000 µL XL	1000 Tips/Pk, 10000 Tips/Cs

Reload Systems

Save time & money!

- Reduce waste by reusing autoclavable tip boxes.
 - Budget friendly—less expensive than pre-racked tips.
 - Reload 96 tips in 3 seconds or less!
- 100% recyclable.

Bench Pack Reloads

Bench Pack reloads are housed in paperboard packaging which is preferred in some recycling programs.

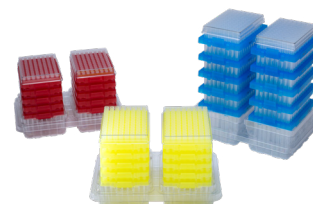


Bench Pack Reloads

Thomas No.	Volume	Quantity
1138M50	10 µL	960 Tips/Pk, 9600 Tips/Cs
1138M51	10 µL XL	960 Tips/Pk, 9600 Tips/Cs
1138M52	200 µL	960 Tips/Pk, 9600 Tips/Cs
1148B79	300 µL	960 Tips/Pk, 9600 Tips/Cs
1145N13	1000 µL XL	768 Tips/Pk, 3840 Tips/Cs

Clean Pack Reloads

Clean Pack reloads are housed in clean, durable PET packaging and are 100% particulate-free.



Clean Pack Reloads

Thomas No.	Volume	Quantity
1149J75	10 µL	960 Tips/Pk, 9600 Tips/Cs
1149J96	10 µL XL	960 Tips/Pk, 9600 Tips/Cs
1149K11	200 µL	960 Tips/Pk, 9600 Tips/Cs
1148B86	300 µL	960 Tips/Pk, 9600 Tips/Cs
1148F58	1000 µL XL	960 Tips/Pk, 9600 Tips/Cs



Clean Pack, Barrier Tip Reloads

Thomas No.	Volume	Quantity
20A00F769	10 µL	192 Tips/Pk, 4800 Tips/Cs
20A00F768	10 µL XL	192 Tips/Pk, 4800 Tips/Cs
1138M54	20 µL	192 Tips/Pk, 4800 Tips/Cs
20A00F770	100 µL	192 Tips/Pk, 4800 Tips/Cs
1138W96	200 µL	192 Tips/Pk, 4800 Tips/Cs
1138W97	1000 µL XL	192 Tips/Pk, 2880 Tips/Cs

Empty Racks

Thomas No.	Volume	Quantity
1138W11	10 µL - 300 µL	20 Empty Racks/Pk
1138W12	1000 µL XL	20 Empty Racks/Pk

Pipette Tips



1158U42



1158U34



1158U30

SHARP™ Classic Low Retention Pipet Tips

Thomas No.	Description	Qty
1158U42	SHARP™ Classic Low Retention Pipet Tips, 10µL Racked Tip, Non-Sterile	960/Pk 4800/Cs
1158U43	SHARP™ Classic Low Retention Pipet Tips, 10µL Racked Tip, Sterile	960/Pk 4800/Cs
1158U44	SHARP™ Classic Low Retention Pipet Tips, 10µL XL Racked Tip, Non-Sterile	960/Pk 4800/Cs
1158U45	SHARP™ Classic Low Retention Pipet Tips, 10µL XL Racked Tip, Sterile	960/Pk 4800/Cs
1158U46	SHARP™ Classic Low Retention Pipet Tips, 10µL XL, bulk packaging	1000/Pk 10000/Cs
1158U39	SHARP™ Classic Low Retention Pipet Tips, 1250µL Racked Tip, Non-Sterile	576/Pk 2304/Cs
1158U40	SHARP™ Classic Low Retention Pipet Tips, 1250µL Racked Tip, Sterile	576/Pk 2304/Cs
1158U37	SHARP™ Classic Low Retention Pipet Tips, 200µL, bulk packaging	1000/Pk 10000/Cs
1158U38	SHARP™ Classic Low Retention Pipet Tips, 200µL Racked Tip, Non-Sterile	960/Pk 4800/Cs
1159M44	SHARP™ Classic Low Retention Pipet Tips, 200µL Racked Tip, Sterile	960/Pk 4800/Cs

SHARP™ Classic Precision Barrier Tips

Thomas No.	Description	Qty
1158U34	SHARP™ Classic Precision Barrier Tips, Standard Length for P-2 and P-10, 10µl, (10 racks of 96)	960/Pk 4800/Cs
1159M41	SHARP™ Classic Precision Barrier Tips, Extra Long for P-2 and P-10, 10µl, (10 racks of 96)	960/Pk 4800/Cs
1159M43	SHARP™ Classic Precision Barrier Tips, For P-20, 20µl, (10 racks of 96)	960/Pk 4800/Cs
1158U33	SHARP™ Classic Precision Barrier Tips, For P-100, 100µl, 960 (10 racks of 96)	960/Pk 4800/Cs
1159M40	SHARP™ Classic Precision Barrier Tips, For P-200, 200µl, (10 racks of 96)	960/Pk 4800/Cs
1158U10	SHARP™ Classic Precision Barrier Tips, For most 250µl and 300µl Multichannels from Denville, BioHit, 960 (10 racks of 96)	960/Pk 4800/Cs
1159M42	SHARP™ Classic Precision Barrier Tips, For P-1000 and Eppendorf 1000, 1250µl, (6 racks of 96)	576/Pk 2304/Cs

SHARP™ precision barrier tips eliminate false signals and cross contamination caused by aerosols. SHARP tips feature low retention polymer technology that virtually eliminates sample retention.

The inert hydrophobic barrier prevents pipettor contamination without trapping liquid or contaminating samples. These tips provide the most accurate sample delivery in the industry. They contain no nucleic acids, PCR inhibitors, detectable nucleases or endotoxins.

All sizes are natural color, presterilized and free of metallic content.

SHARP™ Classic Refills (formerly Woodpecker Reloads), Tip Transfer System

Thomas No.	Description	Qty
1158U30	SHARP™ Classic Refills, Tip Transfer System, Empty rack for above 10µl tips (P2102)	1/Ea 165/Cs
1158U35	SHARP™ Classic Refills, Tip Transfer System, 10µl Natural tips in preloaded carriers, with one free rack	960/Pk 9600/Cs
1158U55	SHARP™ Classic Refills, Tip Transfer System, 10µl Natural tips in preloaded carriers, without free rack	960/Pk 9600/Cs
1158U61	SHARP™ Classic Refills, Tip Transfer System, 10µl extra long (45mm) tips in preloaded carriers, with rack	960/Pk 9600/Cs
1158U36	SHARP™ Classic Refills, Tip Transfer System, 200µl Natural tips in preloaded carriers, with rack	960/Pk 9600/Cs
1158U41	SHARP™ Classic Refills, Tip Transfer System, 200µl Yellow tips in preloaded carriers	960/Pk 9600/Cs
1158U56	SHARP™ Classic Refills, Tip Transfer System, 200µl Natural tips in preloaded carriers, without rack	960/Pk 9600/Cs
1158U29	SHARP™ Classic Refills, Tip Transfer System, Empty hinged lid rack for above 200µl tips and P2104	1/Ea 129/Cs
1158T93	SHARP™ Classic Refills, Tip Transfer System, Empty hinged rack for 1250µl tips	1/Ea 60/Cs
1158U31	SHARP™ Classic Refills, Tip Transfer System, 1250µl Natural tips in preloaded carriers	576/Pk 4608/Cs

Pipette Tips



Sharp Elite™ LTS®-Compatible Pipette Tips

- Compatible with Rainin® single- and multi-channel LiteTouch® pipettors
- Light force required to add or eject tips
- LTS tips are made from medical-grade virgin polypropylene
- Seamless upgrade to your pipetting experience

Manufactured in the USA, these LTS-Style tips deliver the accuracy and precision that provides consistent and reliable results.

Thomas No.	Description	Qty.
23A00V212	Sharp Elite™, 20 µL Rainin* style pipette Tips for LTS Pipettors, Reloads	960/Pk - 9600/Cs
23A00V213	Sharp Elite™, 20 µL Rainin* style pipette Tips for LTS Pipettors, Reloads, Sterile	960/Pk - 9600/Cs
23A00V214	Sharp Elite™, 20 µL Rainin* style pipette Tips for LTS Pipettors, Racked	960/Pk - 4800/Cs
23A00V215	Sharp Elite™, 20 µL Rainin* style pipette Tips for LTS Pipettors, Racked, Sterile	960/Pk - 4800/Cs
23A00V216	Sharp Elite™, 20 µL Rainin* style barrier pipette Tips for LTS Pipettors, Racked, Sterile	960/Pk - 4800/Cs
23A00V217	Sharp Elite™, 200 µL Rainin* style pipette Tips for LTS Pipettors, Reloads	960/Pk - 9600/Cs
23A00V218	Sharp Elite™, 200 µL Rainin* style pipette Tips for LTS Pipettors, Reloads, Sterile	960/Pk - 9600/Cs
23A00V219	Sharp Elite™, 200 µL Rainin* style pipette Tips for LTS Pipettors, Racked	960/Pk - 4800/Cs
23A00V220	Sharp Elite™, 200 µL Rainin* style pipette Tips for LTS Pipettors, Racked, Sterile	960/Pk - 4800/Cs
23A00V221	Sharp Elite™, 200 µL Rainin* style barrier pipette Tips for LTS Pipettors, Racked, Sterile	960/Pk - 4800/Cs
23A00V222	Sharp Elite™, 300 µL Rainin* style pipette Tips for LTS Pipettors, Reloads	960/Pk - 9600/Cs
23A00V223	Sharp Elite™, 300 µL Rainin* style pipette Tips for LTS Pipettors, Reloads, Sterile	960/Pk - 9600/Cs
23A00V224	Sharp Elite™, 300 µL Rainin* style pipette Tips for LTS Pipettors, Racked	960/Pk - 4800/Cs
23A00V225	Sharp Elite™, 300 µL Rainin* style pipette Tips for LTS Pipettors, Racked, Sterile	960/Pk - 4800/Cs
23A00V226	Sharp Elite™, 300 µL Rainin* style barrier pipette Tips for LTS Pipettors, Racked, Sterile	960/Pk - 4800/Cs
23A00V227	Sharp Elite™, 1000 µL XL Rainin* style pipette Tips for LTS Pipettors, Reloads	768/Pk - 3840/Cs
23A00V228	Sharp Elite™, 1000 µL XL Rainin* style pipette Tips for LTS Pipettors, Reloads, Sterile	768/Pk - 3840/Cs
23A00V229	Sharp Elite™, 1000 µL XL Rainin* style pipette Tips for LTS Pipettors, Racked	960/Pk - 3840/Cs
23A00V230	Sharp Elite™, 1000 µL XL Rainin* style pipette Tips for LTS Pipettors, Racked, Sterile	960/Pk - 3840/Cs
23A00V231	Sharp Elite™, 1000 µL XL Rainin* style barrier pipette Tips for LTS Pipettors, Racked, Sterile	960/Pk - 3840/Cs
23A00V232	Sharp Elite™, Empty Racks, for 20-200 µL LTS®-Compatible Pipette Tips	20/Cs
23A00V233	Sharp Elite™, Empty Racks, for 300 µL LTS®-Compatible Pipette Tip	20/Cs
23A00V234	Sharp Elite™, Empty Racks, for 1000 µL XL LTS®-Compatible Pipette Tips	20/Cs



Thomas No.	Description	Qty
1159Z40	Sharp™ 8-Channel Pipettor, 0.5-10µL	1/Ea
1159Z41	Sharp™ 8-Channel Pipettor, 20-200µL	1/Ea
1159Z42	Sharp™ 8-Channel Pipettor, 50-300µL	1/Ea
1159Z43	Sharp™ 8-Channel Pipettor, 5-50µL	1/Ea

Sharp™ Multi Channel Pipettor

- Dual volume setting system
- Adjustable ejector (NEW “klik-to-fix” system)
- Universal shaft
- Durable sealing system effective for 60,000 cycles
- Fully autoclavable, UV resistant
- Large pipetting pushbutton, color coded
- Contoured handle
- Soft spring system minimizes hand fatigue



Sharp™ Pipettors provide both accurate and precise liquid dispensing in a comfortable ergonomic design, dual volume setting and a volume lock to avoid volume changes during routine pipetting.

*For more sizes, please visit thomassci.com

www.thomassci.com/Equipment/Multichannel-Pipettors/ /Denville-Ultra-EZpette-Multichannel-High-Precision-Digital-Pipettors

SHARP™ Single Channel High Precision Pipettors

- Dual volume setting system
- Adjustable ejector (NEW “klik-to-fix” system)
- Universal shaft
- Durable sealing system effective for 60,000 cycles
- Fully autoclavable, UV resistant
- Large pipetting pushbutton, color coded
- Contoured handle
- Soft spring system minimizes hand fatigue

SHARP™ Pipettor is fully autoclavable. Eight models cover the volume range from 0.1µL to 10,000µL. A calibration tool is included with each unit for easy in-lab recalibration. Pipettes are individually tested and supplied with a certificate of quality.

*For more sizes, please visit thomassci.com

www.thomassci.com/Equipment/Single-Channel-Pipettors/ /Denville-Ultra-EZpette-Single-Channel-High-Precision-Digital-Pipettors



Thomas No.	Description	Qty
1159Z23	SHARP™ Single Channel Pipettor, 1,000-10,000µL	1/Ea
1159Z25	SHARP™ Single Channel Pipettor, 100-1,000µL	1/Ea
1159Z27	SHARP™ Single Channel Pipettor, 10-100µL	1/Ea
1159Z29	SHARP™ Single Channel Pipettor, 0.5-10 µL	1/Ea

Thomas No.	Description	Qty
1159Z16	labForce® Motorized Pipette Controller	1/Ea

labForce® Motorized Pipette Controller

- Lightweight, ergonomic
- 0.5 to 100 mL pipette range
- Large LCD display
- Autoclavable
- Motorized and Ergonomic

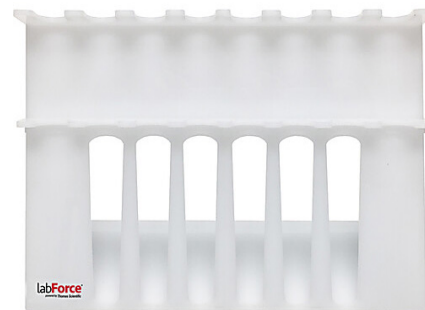


Lightweight and ergonomically shaped motorized pipette controller designed for work with glass or plastic serological pipettes from 0.5 to 100 ml range. Conveniently positioned switches allow choosing different operation modes and speed depending on the volume of the serological pipette and liquid viscosity.

Pipettor Stands & Racks



labForce®
powered by *Thomas Scientific*



labForce® Pipette Stand

labForce® Multi-Channel Capable Pipette racks are unique in their ability to accommodate multi-channel pipettes without sacrificing any of the stability of a traditional acrylic rack. The patent pending “windows” allow the user to insert the multi-channel head long ways through the rack, while keeping the body of the pipette stable by securing the pipette at two points; under the finger hook, and near the bottom of the handle. SureStand is available in 3 versions; a 3-place rack that accepts one multi-channel, a 5-place rack that accepts two multi-channels, and a 6-place rack that accepts four multichannels. Each SureStand is also outfitted with four non-skid rubber “feet” for extra stability. SureStand is guaranteed to be the sturdiest and most versatile pipette rack in your lab.

- Universal – Fits all popular pipettes
- 5mm acrylic – 40% thicker
- Non-skid rubber feet
- Multi-channel “window” slots

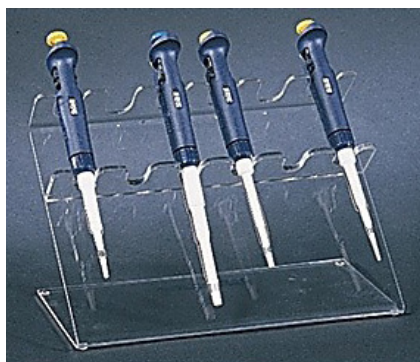
US Patent No 872,300
Pipettes Not Included

Thomas No.	Description	Qty
23A00A618	labForce® Pipette Stand for 3 pipettes, up to one multi-channel, acrylic	1/Ea
23A00A619	labForce® Pipette Stand for 5 pipettes, up to two multi-channels, acrylic	1/Ea
23A00A620	labForce® Pipette Stand for 6 pipettes, up to four multi-channels, acrylic	1/Ea
23A00A621	labForce® Pipette Stand for 8 pipettes, up to six multi-channels, acrylic	1/Ea

6-Place Pipette Stand

labForce® six place pipette holder that accepts most major brands of pipettes. The pipette stand is made of durable, 3/16" acrylic for years of use.

The skid resistant feet will prevent the stand from sliding on your bench top.
Dimension: 11"W x 9.25"H X 6"D



Thomas No.	Description	Qty
1140H35	Pipette Stand, 6-Place, Clear Acrylic	1/Ea

Thomas No.	Description	Qty
21A00D417	labForce® Drying Rack Set, Wall/Bench Mount	1/Ea 2/Cs
21A00D418	Drying Rack Replacement Basket, Clear	2/Pk
21A00D419	Drying Rack Replacement Pegs (5 Long, 5 Short)	10/Pk
21A00D420	Drying Rack Replacement Draining Set	1/Ea

Drying Rack

- Features channels designed for more configuration and to protect against breakage
- Drying Basket to keep small items and slotted to hold pipettes safe while drying
- SureGrip Hook with Patent-pending design to securely grips glassware into place





Quickly find the right PCR plate for your Thermal Cycler!

Check PCR Plate compatability online.

Product Type

☒ Plate ☐ Tubes

Brand

SELECT BRAND

Model

SELECT MODEL

Format

SELECT FORMAT

Type

SELECT TYPE

SEARCH

RESET





PCR Selector Guide

● Best fit

● Also fits

PCR Plates

Cat No.	Vol.	Plate Description	Color	Notch
1148A38 1149K04	0.2 mL	96-Well No Skirt, Standard	Clear	A12
1148A47	0.1 mL	96-Well No Skirt, Low-Profile	Clear	H12
1148A58 1139Y45	0.2 mL	96-Well Semi-Skirt, ABI-Type	Clear	A12
1148A69 1149K06	0.2 mL	96-Well Semi-Skirt, ABI®-Type	Clear	A12
1148A73	0.1 mL	96-Well Semi-Skirt, Low Profile, Raised Sides, Fits ABI Fast® Cyclers	Clear	A1
1139Y46 1149K03	0.2 mL	96-Well Semi-Skirt, Straight Side	Clear	A12
1139Y51	0.1 mL	96-Well Semi-Skirt, Low Profile, LightCycler® Compatible	White	H12
1148A98 1149K05	0.1 mL	96-Well Full Skirt, Low-Profile	Clear	A12
1148B05	0.1 mL	96-Well Full Skirt, Low-Profile, Bio-Rad® Compatible	White	A12
1148A95 1148A96	30 µL	384-Well Full Skirt, ABI-Type	Clear	A24
1148A91	30 µL	384-Well Full Skirt, Roche®-Type	Clear	A24, P24

RigiFrame™ Rigid PCR Plates

Cat No.	Vol.	Description	Color (Frame, Well)	Notch
23A00U722 ^{1,2}	0.1 mL	96-Well Full-Skirt	Clear, Clear	A12
23A00U729 ¹	0.1 mL	96-Well Full-Skirt	Clear, White	A12
23A00U732 ²	0.2 mL	96-Well Semi-Skirt	Clear, Clear	A12
23A00U739 ^{1,2}	30 µL	384-Well Full-Skirt	Clear, Clear	A24
23A00U746 ¹	30 µL	384-Well Full-Skirt	Clear, White	A24
23A00X250 ¹	30 µL	384-Well Full-Skirt	Clear, Clear	A24, P24

¹ Available with barcoding.

² Assorted color frames available - see p. 9.

Plate Sealing Options - Strip Caps

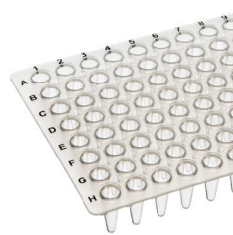
Item #	Description	Quantity
1149Z34	8-Strip Optically-Clear Flat Caps	125/PK
1149Z13	8-Strip Dome Caps	125/PK
1149Z35	12-Strip Optically-Clear Flat Caps	80/PK
1149Z20	12-Strip Dome Caps	80/PK



No Skirt, Standard
1149K04, 1148A38



Half Skirt, Straight Side
1149K03, 1139Y46



No Skirt, Low-Profile
1148A47



Half Skirt, LightCycler®
1139Y51



Half Skirt, ABI-Type
1148A58, 1139Y45



Full Skirt, Low-Profile
1149K05, 1148A98



Half Skirt, ABI-Type
Raised Rim
1148A69, 1149K06



Full Skirt, One-Notch
1148A96, 1148A95



Half Skirt, ABI Fast
1148A73



Full Skirt, Two-Notch
1148A91

				AB applied biosystems™				Roche				BIO-RAD				Eppendorf				Agilent				analytikjena				
				7300, 7500	ProFlex, SimplicAmp™, Veriti, MiniAmp™, MiniAmp Plus	GeneAmp 9700	QuantStudio™ 3, 5, 6, 6 Pro, 7, 7 Pro, 12K, Viia™ 7900HT	7500 Fast®	GeneAmp 9800	StepOnePlus™	QuantStudio 7900HT	QuantStudio (3, 5, 6, 7, 12K), Viia 7, 7900HT	LightCycler®	PTC Tempo 96, 200, 220, 225	iCycler®, MyCycler	IQ™ 4, IQ™ 5, MyIQ, MyIQ2	C1000 / S1000	CFX 96 (Connect and Touch)	CFX 384	T100	Mastercycler®	Mastercycler® Gradient	Mastercycler® ep / Pro 384	Mastercycler® X50	Agilent AriaMX	Stratagene Mx series, SureCycler 880	Analytik Jena qTower / Biometra	Analytik Jena Biometra TOne and TAdvanced
Plates	96-well - 0.2 mL	96-well Fast® / 0.1 mL	384-w																									
10													●	●	●	●			●		●	●	●	●		●		●
25																				●								
20													●		●						●	●	●	●	●	●	●	●
10	●	●	●	●																		●				●	●	
25	●	●	●	●																								
10							●	●	●	●																		
50	●	●	●	●										●	●	●	●		●		●	●	●	●		●	●	●
25																												
10							●									●												
10													●				●				●	●	●	●	●		●	●
25																												
10																	●									●	●	●
10											●							●				●	●			●	●	●
25																												
10												●																

Plates	96-well - 0.2 mL	96-well Fast® / 0.1 mL	384-w																									
10																												
10																												
10																												
10																												
10																												
10																												
10																												

Don't see your instrument?
Check here.



Plate Sealing Options - Film, Foil, & Mat

Item #	Description	Quantity
1148B09	Real-Time Sealing Film	100/PK
1148B11	PCR Sealing Film	100/PK
1148B13	Pierceable Aluminum Foil	100/PK
1148B07	Silicone Sealing Mat	5/PK

RigiFrame™

Amplifyt™ RigiFrame™ PCR plates, by labForce® (a Thomas Scientific Brand), are designed to support your PCR and qPCR applications using high-quality standards and materials, making them a reliable choice in your applications.

The rigid frame remains dimensionally stable during thermal cycling, which facilitates reliable robotic handling and ensures that the seal to each well is not compromised during thermal cycling.

Low Profile Plates



Thomas No.	Description	Qty
21A00Q064	Amplifyt™ RigiFrame™ 96 Well PCR Plate, Fully Skirted with H1 cut corner, Low Profile 0.2mL Wells, Black Ultra Rigid Frame, Clear Tubes	50/Bx
21A00Q065	Amplifyt™ RigiFrame™ 96 Well PCR Plate, Fully Skirted with H1 cut corner, Low Profile 0.2mL Wells, Black Ultra Rigid Frame, White Tubes	50/Bx
21A00Q066	Amplifyt™ RigiFrame™ 96 Well PCR Plate, Fully Skirted with H1 cut corner, Low Profile 0.2mL Wells, Black Ultra Rigid Frame, High Sensitivity White Tubes	50/Bx
21A00Q067	Amplifyt™ RigiFrame™ 96 Well PCR Plate, Fully Skirted with H1 cut corner, Low Profile 0.2mL Wells, White Ultra Rigid Frame, Clear Tubes	50/Bx



*For more options, please visit [thomassci.com](https://www.thomassci.com)

https://www.thomassci.com/Laboratory-Supplies/PCR-Plates/_/96-Well-PCR-Plate-Fully-Skirted-Low-Profile

Roche Style Plates



Thomas No.	Description	Qty
21A00Q070	Amplifyt™ RigiFrame™ 96 Well PCR Plate, Semi-Skirted, Roche Style with H12 cut corner, Low Profile 0.2mL wells, Clear Rigid Frame, Clear Tubes	50/Bx
21A00Q071	Amplifyt™ RigiFrame™ 96 Well PCR Plate, Semi-Skirted, Roche Style with H12 cut corner, Low Profile 0.2mL wells, Clear Rigid Frame, White Tubes	50/Bx
21A00Q072	Amplifyt™ RigiFrame™ 96 Well PCR Plate, Semi-Skirted, Roche Style with H12 cut corner, Low Profile 0.2mL wells, White Rigid Frame, White Tubes	50/Bx
21A00Q073	Amplifyt™ RigiFrame™ 96 Well PCR Plate, Semi-Skirted, Roche Style with H12 cut corner, Low Profile 0.2mL wells, White Rigid Frame, High Sensitivity White Tubes	50/Bx
21A00Q081	Amplifyt™ RigiFrame™ 384 Well PCR Plate, Fully Skirted, Roche style with A24 and P24 cut corners, 0.45µl wells, White Frame, White Tubes	50/Bx



Universal Plates



Thomas No.	Description	Qty
21A00Q074	Amplifyt™ RigiFrame™ 96 Well PCR Plate, Semi-Skirted, Universal style with H1 cut corner, Standard Profile 0.3mL wells, Clear Rigid Frame, Clear Tubes	50/Bx
21A00Q075	Amplifyt™ RigiFrame™ 96 Well PCR Plate, Semi-Skirted, Universal style with H1 cut corner, Standard Profile 0.3mL wells, Clear Rigid Frame, White Tubes	50/Bx
21A00Q076	Amplifyt™ RigiFrame™ 96 Well PCR Plate, Semi-Skirted, Universal style with H1 cut corner, Standard Profile 0.3mL wells, Clear Rigid Frame, High Sensitivity White Tubes	50/Bx



ABI Style Plates



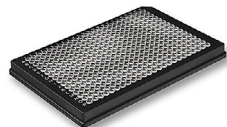
Thomas No.	Description	Qty
21A00Q077	Amplifyt™ RigiFrame™ 96 Well PCR Plate, Semi-Skirted, ABI style with A12 cut corner, Standard Profile 0.3mL wells, Clear Rigid Frame, Clear Tubes	50/Bx
21A00Q078	Amplifyt™ RigiFrame™ 96 Well PCR Plate, Semi-Skirted, ABI style with A12 cut corner, Standard Profile 0.3mL wells, Clear Rigid Frame, White Tubes	50/Bx



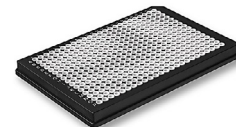


RigiFrame™

Black Frame Plates



Thomas No.	Description	Qty
21A00Q079	Amplifyt™ RigiFrame™ 384 Well PCR Plate, Fully Skirted with A24 cut corner, 0.45µl wells, Black Ultra Rigid Frame, Clear Tubes	50/Bx
21A00Q080	Amplifyt™ RigiFrame™ 384 Well PCR Plate, Fully Skirted with A24 cut corner, 0.45µl wells, Black Ultra Rigid Frame, White Tubes	50/Bx
22A00F835	Amplifyt™ RigiFrame™ 384 Well PCR Plate, Fully Skirted with A24 cut corner, 0.45µl wells, Black Ultra Rigid Frame, High Sensitivity White Tubes	50/Bx
21A00Q082	Amplifyt™ RigiFrame™ 96 Well Storage Plate, Fully Skirted with H1 cut corner, 0.15mL wells, Low Bind, High Recovery, Black Rigid Frame, Clear Tubes	50/Bx



Seals

Seal Options



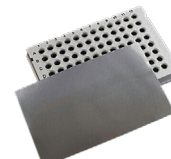
Thomas No.	Description	Qty
22A00A404	labForce® Clear PCR Adhesive Seal	100/Pk
22A00A406	labForce® Optically Clear qPCR Adhesive Seal	100/Pk
22A00A409	labForce® Clear Heat Seal, Peelable	100/Pk
22A00A410	labForce® Peelable Heat Seal with White Backing	100/Pk
22A00A411	labForce® Clear Heat Seal, Permanent Bond	100/Pk
22A00A415	labForce® Clear Heat Seal, Peelable, roll, 500m x 78mm x 500m	1/Ea
22A00A416	labForce® Peelable Heat Seal with White Backing, roll, 610m x 78mm x 610m	1/Ea
22A00A417	labForce® Clear Heat Seal, Permanent Bond, roll, 78mm x 610m	1/Ea
22A00F040	labForce® Standard Clear Adhesive Seal	100/Pk
22A00F043	labForce® Clear Heat Seal, Peelable, wide roll, 115mmx350m	1/Ea
22A00F044	labForce® Peelable Heat Seal, White Backing, wider roll, 115mmx500m	1/Ea
22A00F045	labForce® Clear Heat Seal, Permanent Bond, wide roll, 115mmx500m	1/Ea



Foil Seal Options



Thomas No.	Description	Qty
22A00A405	labForce® Foil Adhesive Seal	100/Pk
22A00A407	labForce® Thin Foil Heat Seal, Pierceable	100/Pk
22A00A408	labForce® Foil Heat Seal, Peelable and Pierceable	100/Pk
22A00A412	labForce® Thermal Bond Thick Foil Heat Seal, Peelable	100/Pk
22A00A413	labForce® Thin Foil Heat Seal, Pierceable, roll, 610m x 78mm x 610m	1/Ea
22A00A414	labForce® Foil Heat Seal, Peelable and Pierceable, roll, 78mm x 610m	1/Ea
22A00A418	labForce® Thermal Bond Thick Foil Heat Seal, roll, 78mm x 500m	1/Ea
22A00F041	labForce® Thin Foil Heat Seal, Pierceable, wide roll, 115mmx500m	1/Ea
22A00F042	labForce® Foil Heat Seal, Peelable, Pierceable, wider roll, 115mmx500m	1/Ea
22A00F046	labForce® Thermal Bond Thick Foil Heat Seal, wider roll, 115mmx300m	1/Ea
22A00F044	labForce® Peelable Heat Seal, White Backing, wider roll, 115mmx500m	1/Ea
22A00F045	labForce® Clear Heat Seal, Permanent Bond, wide roll, 115mmx500m	1/Ea





Ultra-thin walls for optimum heat transfer and reaction efficiency.

Crystal clarity easy to visualize content of each well.

Certified free of DNase, RNase, DNA, and PCR inhibitors.



Rigid Strip

Preferred by most customers, due to rigid linkages that prevent spills.



Split-Strip

Great for customers who use only portions of strips. Simply break off the number of tubes you require and save the rest. No scissors required.



Hinge Strips

Prevent accidents common with separate caps.

Rigid-Strip Tubes with Individually-Attached Caps

Thomas No.	Volume	Description	Colors	Quantity
1148A28	0.2 mL	8-Strip Tubes, Optically-Clear Flat Caps	Clear*	120 strips/Pk
1159V39	0.1 mL	8-Strip Low-Profile Tubes, Optically-Clear Flat Caps	Clear	120 strips/Pk
1148A35	0.2 mL	8-Strip Tubes, Optically-Clear Flat Caps	White	120 strips/Pk
1148A36	0.1 mL	8-Strip Low-Profile Tubes, Optically-Clear Flat Caps	White	120 strips/Pk

Best Sellers!

Split-Strip Tubes with Individually-Attached Caps

Thomas No.	Volume	Description	Colors	Quantity
1148A16	0.2 mL	8-Strip Tubes, Dome Cap	Clear*	120 strips/Pk
1148A25	0.2 mL	8-Strip Tubes, Flat Caps	Clear	120 strips/Pk
1148A26	0.1 mL	8-Strip Tubes, Flat Caps, Low-Profile	Clear	120 strips/Pk

Hinge-Strip Tubes with Attached Caps

Thomas No.	Volume	Description	Colors	Quantity
1148A07	0.2 mL	8-Strip Tubes, Dome Caps	Clear	125 strips/Pk
1148A09	0.2 mL	8-Strip Tubes, Flat Caps	Clear*	125 strips/Pk

* Color options available online



PCR Tubes & Caps



Separate Tubes & Caps



Individual Tubes



Corbett-Type Tubes

8-Tube & Cap Strips Packed Together

Thomas No.	Volume	Description	Colors	Quantity
1149Z65	0.2 mL	8-Strip Tubes & Domed Strip Caps	Clear*	125 sets/Pk
1149K07	0.2 mL	8-Strip Tubes & Optically-Clear Flat Caps	Clear	125 sets/Pk
1149Z78	0.2 mL	8-Strip Tubes & Optically-Clear Flat Caps	White	125 sets/Pk
1149Z81	0.1 mL	8-Strip Low-Profile Tubes & Optically-Clear Flat Caps	Clear	125 sets/Pk

12-Tube & Cap Strips Packed Together

Thomas No.	Volume	Description	Colors	Quantity
1149Z68	0.2 mL	12-Strip Tubes & Domed Strip Caps, Clear	Clear*	80 sets/Pk
1149Z79	0.2 mL	12-Strip Tubes & Flat Optically-Clear Strip Caps	Clear	80 sets/Pk

Separate Tube & Cap Strips

Thomas No.	Volume	Description	Colors	Quantity
1149Z13	--	8-Strip Dome Caps	Clear*	125 strips/Pk
1149Z34	--	8-Strip Optically-Clear, Flat Caps	Clear	125 strips/Pk
1149Z20	--	12-Strip Dome Caps	Clear	80 strips/Pk
1149Z35	--	12-Strip Optically-Clear, Flat Caps	Clear	80 strips/Pk
1149Z36	0.2 mL	8-Strip Tubes	Clear*	125 strips/Pk
1149Z51	0.1 mL	8-Strip Tubes, Low-Profile	Clear	125 sets/Pk
1149Z52	0.1 mL	8-Strip Tubes, Low-Profile	White	125 sets/Pk
1159V31	0.2 mL	12-Strip Tubes	Clear	80 strips/Pk

Individual PCR Tubes

Thomas No.	Volume	Description	Colors	Quantity
1149Z84	0.2 mL	Tubes with Dome Caps	Clear*	1000/Pk
1149Z91	0.2 mL	Tubes with Frosted Flat Cap	Clear*	1000/Pk
1149Z98	0.2 mL	Tubes with Optically-Clear Flat Caps	Clear	1000/Pk
1149Z99	0.5 mL	Tubes with Dome Caps	Clear	1000/Pk
1148A00	0.5 mL	Tubes with Frosted Flat Caps	Clear*	1000/Pk

Corbett-Type Strip Tubes & Caps

Thomas No.	Volume	Description	Colors	Quantity
1139Y44	0.1 mL	Corbett-Type Strip Tubes & Caps (Compatible with Rotor-Gene)	Clear	250 sets/Pk

* Color options available online



96-Well Round Bottom, Deep-Well Square Bottom Plate

96-Well Deep Round – Raised Rim – 1mL

- Manufactured from pre-tested polypropylene for low extractables
- 42mm Height
- Cylindrical well with round bottom for optimal mixing and recovery
- Alphanumeric grid referencing
- Rimmed version eliminates cross contamination and permits better sealing
- Non-rimmed version allows use of vials
- Can be stored at 80°C

96-Well Deep – Raised Well – 350uL, 1mL and 2mL per well

- Manufactured from virgin polypropylene
- 44mm Height, "V" Bottom permits total liquid removal
- Conical base helps in sample concentration, reconstitution and centrifugation
- Alphanumeric grid referencing
- Raised rims improves heat sealing

96-Well Deep Round – Common Wall – 2mL per well

- Manufactured from pre-tested polypropylene for low extractables
- 45mm Height, "V" Bottom allows total liquid removal
- "Common Wall" design allows the highest possible volume to be used while maintaining an overall height of 45mm
- Cylindrical well with round bottom optimizes mixing and recovery
- Can be stored at 80°C

Thomas No.	Description	Qty
1159Q90	Deep Square Well Plate, 1mL per well, Polypropylene, Square Well	5/Pk 50/Cs
1159Q91	96 Deep Square Well Plate, 350uL per well, Polypropylene, Square Well	5/Pk 50/Cs
1159Q92	96 Deep Square Well Plate, 2mL per well, Polypropylene, Pyramid Bottom	5/Pk 50/Cs
1159Q95	96 Deep Round Well Plate, 2mL per well, Polypropylene, Common Wall, Rimless	5/Pk 50/Cs
1159Q96	96 Deep Round Well Plate, 1mL per well, Polypropylene, Raised Rim	5/Pk 50/Cs
1159Q93	2mL Square Well Toughened GenomiCs Plate	5/Pk 50/Cs
1159Q94	EVA Sealing Cap, 96 Square Well (use with labForce®1159Q93)	5/Pk 50/Cs
1159Q97	EVA Sealing Cap, 96 Round Well (use with labForce®1159Q96)	5/Pk 50/Cs

Serological Pipettes



labForce® Serological Pipettes, Individually Wrapped, Sterile

- Made from high clarity 100% virgin polystyrene
- Individually wrapped
- Color-coded for easy identification
- Negative graduations for extra volume
- Sterilized by E-beam, SAL=10⁻⁶
- Non-pyrogenic, non-cytotoxic and non-hemolytic
- DNase/RNase free
- Polyolefin fiber filter to reduce contamination

labForce® disposable serological pipettes with polyolefin fiber filters are ideal for tissue culture applications. Crisp, black, highly legible permanent graduations prevent ambiguity and guarantee precise reading and accurate dispensing within $\pm 2\%$. Generous negative graduations provide additional pipetting volume. labForce's® serological pipettes are made from USP Class VI polystyrene, sterilized by E-beam. Each lot is free from pyrogens, DNases, and RNases.

Thomas No.	Description	Qty
1158R00-LF	labForce® Serological Pipettes, 1mL, Individually Wrapped, Sterile (Replaces Denville part P7131 and Thomas Scientific 1154Q55)	1000/Cs
1158R01-LF	labForce® Serological Pipettes, 2mL, Individually Wrapped, Sterile (Replaces Denville part P7132 and Thomas Scientific 1158R01)	1000/Cs
1158R02-LF	labForce® Serological Pipettes, 5mL, Individually Wrapped, Sterile (Replaces Denville part P7133 and Thomas Scientific 1158R02)	200/Cs
1158R03-LF	labForce® Serological Pipettes, 10mL, Individually Wrapped, Sterile (Replaces Denville part P7134 and Thomas Scientific 1158R03)	200/Cs
1158R04-LF	labForce® Serological Pipettes, 25mL, Individually Wrapped, Sterile (Replaces Denville part P7135 and Thomas Scientific 1158R04)	200/Cs
1158R05-LF	labForce® Serological Pipettes, 50mL, Individually Wrapped, Sterile (Replaces Denville part P7137 and Thomas Scientific 1154Q56)	100/Cs

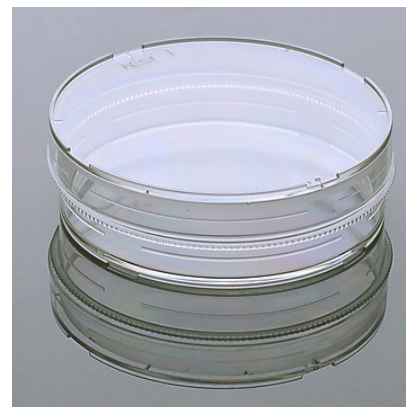
Petri Dishes, Plates & Flasks



Thomas No.	Description	Qty
1188N81-LF	Petri Dish, 90 x 15mm, Semi-Stackable, Sterile, Bulk	500/Cs
1188N82-LF	Petri Dish, 60 x 15mm, Stackable, Sterile	500/Cs
1188N83-LF	Petri Dish, 150 x 15mm, Slippable, Sterile, Bulk	100/Cs

Petri Dishes

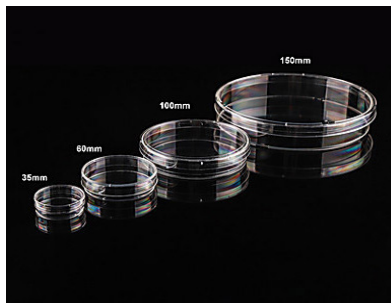
- High clarity polystyrene
- Flat transparent surface
- Numeric mark on the bottom for easy identification
- PA/PE packaging
- Vented for air circulation
- Stackable versions for easy storage and handling
- Unique semi-stackable design on 90 x 15mm size is automation friendly
- DNase/RNase and Human DNA Free, Non-pyrogenic
- Sterilized by E-Beam, SAL=10⁻⁶



These Stackable and Slippable Petri Dishes are ideal for general laboratory use and automated filling systems. Vented lids permit air circulation during incubation to reduce condensation build-up. Petri dishes are optically clear for easy viewing.

Cell Culture Dish

- High clarity, 100% virgin polystyrene.
- Flat transparent surface for distortion-free observation
- Vacuum plasma TC treatment, excellent cell adherence
- Stackable for easy storage and handling
- Sterilized by E-beam, SAL=10⁻⁶
- Non-Pyrogenic, DNase/Rnase free

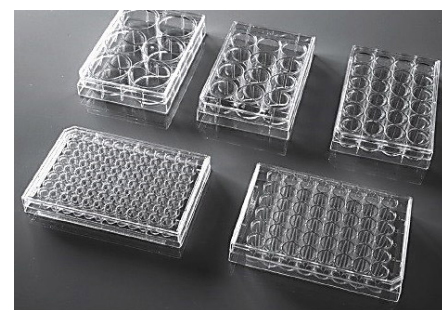


Thomas No.	Description	Qty
21A00M448	Cell Culture Dish, 35mm, Sterile	500/Cs
21A00M449	Cell Culture Dish, 60mm, Sterile	500/Cs
21A00M450	Cell Culture Dish, 100mm, Sterile	300/Cs
21A00M451	Cell Culture Dish, 150mm, Sterile	100/Cs

Thomas No.	Description	Qty
21A00M442	Cell Culture Plate, 6 Well, TC, Individually Wrapped	50/Cs
21A00M443	Cell Culture Plate, 12 Well, TC, Individually Wrapped	50/Cs
21A00M444	Cell Culture Plate, 24 Well, TC, Individually Wrapped	50/Cs

Cell Culture Plate

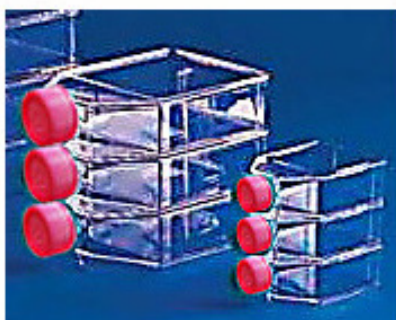
- Sterilized by E-beam, SAL=10⁻⁶
- High clarity, 100% virgin polystyrene
- "TC" refers to vacuum plasma tissue culture treatment
- Clear lot number for batch traceability
- Markings of well coordinates available for 12, 24, 48 and 128 well plates
- Non-Pyrogenic, DNase/Rnase free



*For more options, please visit [thomassci.com](https://www.thomassci.com/Laboratory-Supplies/Plates/_/Cell-Culture-Plate?q=21A00M442)
https://www.thomassci.com/Laboratory-Supplies/Plates/_/Cell-Culture-Plate?q=21A00M442

Treated Cell Culture Flask

- Made of high clarity, 100% virgin polystyrene
- Sterilized by E-beam, SAL=10⁻⁶.
- Non-Pyrogenic, DNase/Rnase free cell culture bottles
- Frosted writing and clear graduations
- Notched bottom for slip free stacking
- Clear lot number for batch traceability
- Cell culture bottles packaged in sterile, zip-sealable bags



Thomas No.	Description	Qty
21A00M452	Cell Culture Flask, 25cm ² , Vent Cap, TC	200/Cs
21A00M453	Cell Culture Flask, 75cm ² , Vent Cap, TC	100/Cs
21A00M454	Cell Culture Flask, 175cm ² , Vent Cap, TC, Sterile	40/Cs
21A00P204	Cell Culture Flask, 225cm ² , Vent, 5/Pk, 25/Cs	25/Cs

Parafilm Box Top Dispenser



Thomas No.	Description	Qty
20A00T383	LabForce® Box Top Dispenser for Parafilm®, Natural	1/Ea



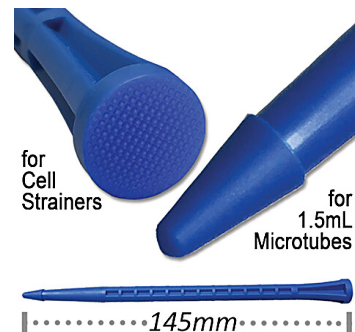
labForce® Box Top Dispenser for Parafilm®, Natural

- Accommodates two 50 mm (2-inch), or one 100 mm (4-inch) Parafilm® M rolls.
- Easy application, simply place the dispenser on top of the Parafilm® M box and pull the sealing film through, there is no need to remove rolls from the packaging.
- Built in safety blade slides and cuts with no danger to fingertips and eliminates the need for scissors.
- Supplied with two safety blades, additional replacement blades are available for purchase.
- Made from ABS plastic making the unit easy to clean.

The labForce® Box Top Dispenser is an easy application with no mess. Simply place the dispenser on top of the Parafilm® M box and pull the sealing film through, there is no need to remove rolls from the packaging.



Premium Cell Strainer



The labForce® Premium Cell Strainer system is a fast and easy-to-use solution for detaching, isolating and straining cells from clusters and tissues. A polypropylene frame supports a nylon mesh that is available in three color-coded porosities: 40µm (blue), 70µm (white), and 100µm (yellow). The advanced frame/housing design also contributes to superior performance and reduced processing time, by eliminating the “air-lock” effect. Improved aeration allows air to escape while filtrate is entering the tube, preventing messy spillovers.

- Advanced design – faster flow through
- Compatible with 6-well plates
- Interlocking and stackable
- Sterile; RNase, DNase, pyrogen and cytotoxin free
- Four 1.5mm feet for straining into flat plates and dishes
- Designed for use with 50mL tubes
- Adapter for 15mL tubes included*

*Patent Pending

Thomas No.	Description	Qty
23A00A605	PolyPestle™ double-sided pestle for cell strainers and 1.5mL microtubes	50/Pk
23A00A606	Reducing Adapter for 15mL/5mL tubes	25/Pk
23A00A607	40µm labForce® cell strainer, sterile, individually wrapped, w/ 1 reducing adapter	50/Pk
23A00A608	70µm labForce® cell strainer, sterile, individually wrapped, w/ 1 reducing adapter	50/Pk
23A00A609	100µm labForce® cell strainer, sterile, individually wrapped, w/ 1 reducing adapter	50/Pk



Made of crystal clear polystyrene, these 12x75mm labForce® FlowTubes™ are designed for Fluorescence Activated Cell Sorting/ flow cytometry equipment including FACS systems from BD Biosciences.

The diameter and wall thickness of the tube's neck is held to very tight tolerances to ensure consistent compatibility with the automated instrument. They are available with the standard two-position culture cap, no cap at all, or with a cap that contains a 35µm nylon mesh screen, designed to assist in cell sorting/straining applications. These tubes are primarily used to collect dissociated sample for subsequent processing in automated flow cytometry instruments.

- Compatible with FACS (BD) instruments
- Available with 35µm strainer cap, standard cap, or no cap
- Clear polystyrene
- 5mL capacity

Pestles for labForce® FlowTubes™ are designed to fit and mate with the 35µm strainer caps, allowing fragile cellular samples to be manipulated, on and through, the mesh membrane. The sterile individually wrapped Pestle's smooth ends are correctly sized and shaped to facilitate manipulation without causing tears, scoring, or distortion.

Thomas No.	Description	Qty
23A00A610	labForce® FlowTubes® with strainer cap, 12x75mm, sterile, 25/bag	500/Cs
23A00A611	labForce® FlowTubes® with strainer cap, 12x75mm, sterile, individually wrapped	500/Cs
23A00A612	Strainer Cap for labForce® FlowTubes™ (cap only), with 35µm strainer mesh, dual position for 12x75mm tubes, sterile, 20 bags of 25 caps	500/Pk
23A00A613	labForce® FlowTubes™ with standard cap, 12x75mm, 25/bag	500/Cs
23A00A614	labForce® FlowTubes™ without cap, 12x75mm, sterile, 250 per tray box	1000/Cs
23A00A615	Standard Cap for labForce® FlowTubes™, sterile, 125/bag	1000/Cs
23A00A616	labForce® FlowTubes™ without cap, non-sterile, bulk econo-pack	4000/Cs
23A00A617	Pestle for labForce® FlowTubes™, for use with 35µm strainer caps, sterile, individually wrapped	100/Pk

Cryovials

CryoFrost™



Resealable, Stand-Up Packaging



- Ultra-pure polypropylene meets FDA 21 CFR 177.1520 & USP Class VI.
- High-contrast, black 100 µL graduations are bold and easy to read.
- Large white writing area on all tubes.
- Optimized for vapor-phase liquid nitrogen storage.
- Available with round base or self-standing Stargrip™ base.
- Temperature range: -196°C to 121°C.
- Packaging: 100/unit, 10 units/case
- Sterile and certified free of detectable DNase, RNase, DNA, PCR inhibitors, and pyrogens.

Note: not suitable for immersion in liquid nitrogen.



Internally-Threaded Caps

Thomas No.	Volume	Base	Description	Qty
1148F01	1.0mL	Stargrip	CryoFrost™ Vials, Int Thread, Self-Standing, Sterile	100/Pk - 1000/Cs
1148F02	1.8mL	Round	CryoFrost™ Vials, Int Thread, Round Base, Sterile	100/Pk - 1000/Cs
1148F03	1.8mL	Stargrip	CryoFrost™ Vials, Int Thread, Self-Standing, Sterile	100/Pk - 1000/Cs
1148F04	3.6mL	Round	CryoFrost™ Vials, Int Thread, Round Base, Sterile	100/Pk - 1000/Cs
1148F05	3.6mL	Stargrip	CryoFrost™ Vials, Int Thread, Self-Standing, Sterile	100/Pk - 1000/Cs
1148F06	4.5mL	Round	CryoFrost™ Vials, Int Thread, Round Base, Sterile	100/Pk - 1000/Cs
1148F07	4.5mL	Stargrip	CryoFrost™ Vials, Int Thread, Self-Standing, Sterile	100/Pk - 1000/Cs

Cap Inserts

- Packaging: 500/unit, 4 units/case

Thomas No.	Color	Thomas No.	Color
1148D90	Blue	1148D96	Brown
1148D91	Green	1148D97	Assorted
1148D92	Orange	1148D98	Grey
1148D93	Red	1148D99	Pink
1148D94	Violet	1148F00	White
1148D95	Yellow		

Externally-Threaded Caps

Thomas No.	Volume	Base	Description	Qty
1148F08	1.0 mL	Stargrip	CryoFrost™ Vials, Ext Thread, Self-Standing, Sterile	100/Pk - 1000/Cs
23A00A023	1.8 mL	Round	CryoFrost™ Vials, Ext Thread, Round Base, Sterile	100/Pk - 1000/Cs
1148F09	1.8 mL	Stargrip	CryoFrost™ Vials, Ext Thread, Self-Standing, Sterile	100/Pk - 1000/Cs
1148F10	4.5 mL	Stargrip	CryoFrost™ Vials, Ext Thread, Self-Standing, Sterile	100/Pk - 1000/Cs





CryoFrost™



GripRack™

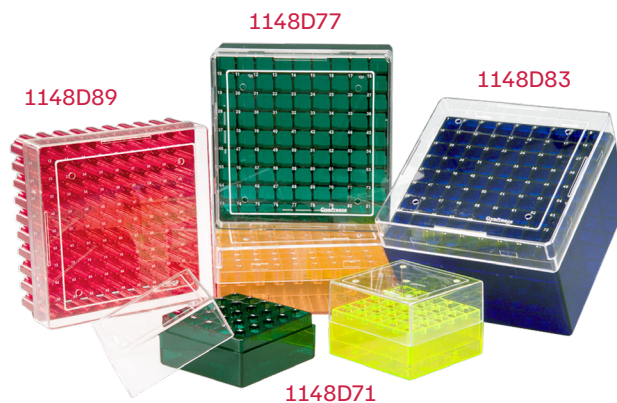
- Ribbed Wells: Ribs inside the wells enable tubes with Stargrip™ bases easy one-handed opening and closing.
- No-Slip Base: Rubber no-slip grips on the base hold the rack securely on the benchtop.
- Clear Labeling: High-contrast alphanumeric indexing for fast sample identification.
- Temperature range: -80°C to 121°C.

Thomas No.	Description	Color	Qty
1148F12	40-Place GripRack	White/Gray	20 Racks/Cs

Storage Racks



Assorted Colors:
blue, green, red, orange, yellow.



- Tough, durable polycarbonate construction prevents warping.
- Drains and vents prevent pressure build-up.
- Temperature range: -196°C to 121°C.
- Crystal clear lid for sample visibility.
- High-contrast alphanumeric indexing.
- Max tube dimensions:
 - 1148D71, 1148D77, and 1148D89: 12 x 49 mm.
 - 1148D83: 12 x 90 mm.

Thomas No.	Description	Volume	Format	Dimensions	Qty
1148D71	25-Place Rack, Assorted Colors	(1.0/1.8 mL Tubes)	5 x 5	76 x 76 x 54 mm	5/unit, 4 units/case
1148D77	81-Place Rack, Assorted Colors	(1.0/1.8 mL Tubes)	9 x 9	133 x 133 x 54 mm	5/unit, 4 units/case
1148D83	81-Place Rack, Assorted Colors	(4.5 mL Tubes)	9 x 9	133 x 133 x 95 mm	5/unit, 4 units/case
1148D89	100-Place Rack, Assorted Colors	(1.0/1.8 mL Tubes)	10 x 10	133 x 133 x 54 mm	5/unit, 4 units/case

Microcentrifuge Tubes

Posi-Lock™

Microcentrifuge Tubes

- Crystal-clear polymer facilitates visualization of samples
- Rated to 20,000 x G (25,000 x G for 5 mL tubes)
- Graduations at every 100 µL for easy volume estimation (250 µL for 5 mL tubes)
- 2 cap styles to suit your preference
- Temperature range: -80°C to +121°C
- Certified free of detectable RNase, DNase, DNA, PCR inhibitors, and tested pyrogen-free. Sterile product is certified pyrogen-free.

Large caps
are easiest to open
and close

Small caps
are ideal for working
in racks



Thomas No.	Volume	Cap Type	Description	Color	Quantity
1149J99	0.6 mL	Small	Boil-proof Microcentrifuge Tubes	Clear	1000/Pk
1149X60			Low-Retention, Boil-proof Microcentrifuge Tubes	Clear	500/Pk
1149X59			Boil-proof Microcentrifuge Tubes	Assorted	1000/Pk
1149X63	1.7 mL	Small	Boil-proof Microcentrifuge Tubes	Clear	500/Pk
1149X83			Boil-proof Microcentrifuge Tubes, Sterile	Clear	250/Pk
1149X75			Low-Retention, Boil-proof Microcentrifuge Tubes	Clear	250/Pk
1149K12			Boil-proof Microcentrifuge Tubes	Assorted	500/Pk
1149K01		Large	Boil-proof Microcentrifuge Tubes	Clear	500/Pk
1138W14			Boil-proof Microcentrifuge Tubes, Sterile	Clear	500/Pk
1149X91			Boil-resistant Microcentrifuge Tubes	Assorted	500/Pk
1149K02	2.0 mL	Small	Boil-proof Microcentrifuge Tubes	Clear	500/Pk
1149Y01			Low-Retention, Boil-proof Microcentrifuge Tubes	Clear	250/Pk
1149Y00			Boil-proof Microcentrifuge Tubes	Assorted	500/Pk
1149Y05	5.0 mL	Large	Boil-proof Microcentrifuge Tubes	Clear	100/Pk
1149Y06			Boil-proof Microcentrifuge Tubes	Assorted	50/Pk



0.6 mL



1.7 mL



2.0 mL



5 mL

Posi-Click™



1.7 mL



0.6 mL

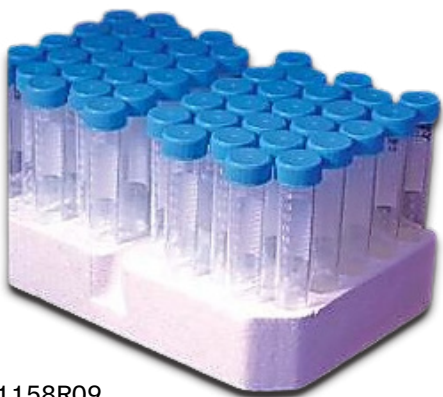
Posi-Click™ tubes seal easily with a distinct "click" and stay closed through incubation, freezing, and boiling procedures. The unique closure system provides a tight seal that is actually strengthened by internal pressure.

The tube will withstand boiling for up to 10 minutes. These tubes include all our improvements, incorporating over a dozen advanced features. Shouldn't you be using the best?

- Boil-proof cap, withstand 28,000 x g
- Double high pressure locking ring
- Frosted writing surface, low retention and RNase, DNase, and pyrogen free

Thomas No.	Volume	Description	Color	Qty
1159M35	1.7 mL	1.7 ml microcentrifuge tube, Boil-Proof Cap, natural color Best Seller!	Natural	500/Pk
20A00F915		Presterilized 1.7 ml microcentrifuge tubes	Natural	250/Pk
1158R05	0.6 mL	Tube, 0.6ml natural color	Natural	1000/Pk

Centrifuge Tubes

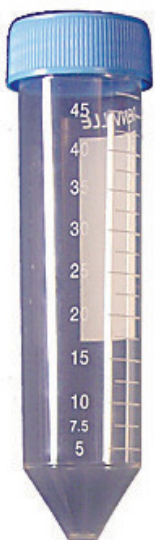


1158R09

labForce®
powered by Thomas Scientific



1163X42



1158R10

- New clearer polypropylene copolymer
- High centrifugal strength - up to 15,000 RCF
- Flat markable cap with seal
- Phenol / Chloroform resistant
- DNase, RNase and pyrogen free



1163X42

- Ultra-High Performance - High spin rates with maximum RCF ratings of up to 20,000 x g for 50mL centrifuge tubes and 17,000 x g for 15mL centrifuge tubes
- Premium Materials - USP Class VI resin is also FDA CFR 21 compliant for food safety
- Certified for ScienceSM - Tubes are manufactured in a class 100,000 clean room, gamma irradiated to SAL 10⁻⁶, and are certified to be free from DNase, RNase, Human DNA, Pyrogens, and Endotoxins, giving you peace of mind to know they meet the requirements for the most critical scientific testing methods

labForce® Centrifuge Tubes

Thomas No.	Description	Qty
1158R09	labForce® Centrifuge Tubes, 50ml (30 X 115mm), Molded with Graduations, Polypropylene with screw cap, (Sterile) 25/ Bag 500/Qty	500/Cs
1158R10	labForce® Centrifuge Tubes in Trays, 50ml (30 X 115mm), Molded with Graduations, Polypropylene with screw cap, (Sterile) 25/ Tray 500/Qty	500/Cs
1158R11	labForce® Centrifuge Tubes, 15ml (17 X 120mm), Molded with Graduations, Polypropylene with screw cap, (Sterile) 25/ Bag 500/Qty	500/Cs
1159M36	labForce® Centrifuge Tubes in Trays, 15ml (17 x 120mm) Molded Graduations, Polypropylene with screw cap, (Sterile) 50/Tray 500/Qty	500/Cs

Ultra-High-Speed 15mL & 50mL Polypropylene Centrifuge Tubes

Thomas No.	Description	Qty
1163X42	Centrifuge Tube, High Performance, 15mL, Red Screw Cap, Assembled, PP, Printed Graduations, STERILE, 25/Bag, 20 Bags/Unit	500/Cs
1163X43	Centrifuge Tube, High Performance, 15mL, Red Screw Cap, Assembled, PP, Printed Graduations, STERILE, 25/Rack, 20 Racks/Unit	500/Cs
1163X44	Centrifuge Tube, High Performance, 50mL, Red Screw Cap, Assembled, PP, Printed Graduations, STERILE, 25/Bag, 20 Bags/Unit	500/Cs
1163X45	Centrifuge Tube, High Performance, 50mL, Red Screw Cap, Assembled, PP, Printed Graduations, STERILE, 25/Rack, 20 Racks/Unit	500/Cs

Screw Cap Tubes



labForce®
powered by Thomas Scientific

1149J77

1149J80



Translucent Colors



Opaque Colors

- Conical bottoms or Self-standing/skirted
- Graduated (every 100µL) or blank versions available
- Suitable for a wide range of temperatures (-196°C to +121°C). Note: not suitable for immersion in liquid nitrogen

- Suitable for a wide range of temperatures (-196°C to +121°C). Note: not suitable for immersion in liquid nitrogen
- Certified free of detectable RNase, DNase, DNA, PCR inhibitors, and tested pyrogen-free

labForce® Centrifuge Tubes

Thomas No.	Description	Qty
1149J77	1.5mL Screw Tube, Skirted Base, Clear	500/Pk 5000/Cs
1149J78	2.0mL Screw Tube, Skirted Base, Graduated, Writing Area, Clear	500/Pk 5000/Cs
1149J79	0.5mL Screw Tube, Skirted Base, Clear	500/Pk 5000/Cs
1149Y62	labForce® 0.5mL Screw Tube, Skirted Base, Ribbed, Clear	500/Pk 5000/Cs
1149Y63	labForce® 0.5mL Screw Tube, Skirted Base, Ribbed, Amber	500/Pk 5000/Cs
1149Y64	labForce® 0.5mL Screw Tube, Conical Base, Clear	500/Pk 5000/Cs
1149Y65	labForce® 0.5mL Screw Tube, Skirted Base, Amber	500/Pk 5000/Cs
1149Y66	labForce® 1.5mL Screw Tube, Conical base, Ribbed, Clear	500/Pk 5000/Cs
1149Y67	labForce® 1.5mL Screw Tube, Skirted Base, Ribbed, Clear	500/Pk 5000/Cs
1149Y68	labForce® 1.5mL Screw Tube, Skirted Base, Ribbed, Amber	500/Pk 5000/Cs
1149Y69	labForce® 1.5mL Screw Tube, Conical Base, Graduated, Writing Area, Clear	500/Pk 5000/Cs
1149Y70	labForce® 1.5mL Screw Tube, Conical Base, Graduated, Writing Area, Amber	500/Pk 5000/Cs
1149Y71	labForce® 1.5mL Screw Tube, Skirted Base, Amber	500/Pk 5000/Cs
1149Y72	labForce® 2.0mL Screw Tube, Conical Base, Ribbed, Clear	500/Pk 5000/Cs
1149Y73	labForce® 2.0mL Screw Tube, Skirted Base, Ribbed, Clear	500/Pk 5000/Cs
1149Y74	labForce® 2.0mL Screw Tube, Skirted Base, Ribbed, Amber	500/Pk 5000/Cs
1149Y75	labForce® 2.0mL Screw Tube, Conical Base, Graduated, Writing Area, Clear	500/Pk 5000/Cs
1149Y76	labForce® 2.0mL Screw Tube, Conical Base, Graduated, Writing Area, Amber	500/Pk 5000/Cs

*For more options, visit [thomassci.com](https://www.thomassci.com/Molecular-Diagnostics/Storage/Tubes/Tubes/_/Screw-Microtubes1):
https://www.thomassci.com/Molecular-Diagnostics/Storage/Tubes/Tubes/_/Screw-Microtubes1

LabForce® Screw Caps for Microtubes

Thomas No.	Description	Qty
1149J80	labForce® Screw Cap with O-Ring, Clear	500/Pk 5000/Cs
1149Y09	labForce® Screw Cap with O-Ring, Amber	500/Pk 5000/Cs
1149Y10	labForce® Screw Cap with O-Ring, Assorted	500/Pk 5000/Cs
1149Y11	labForce® Screw Cap with O-Ring, Blue	500/Pk 5000/Cs
1149Y12	labForce® Screw Cap with O-Ring, Green	500/Pk 5000/Cs
1149Y13	labForce® Screw Cap with O-Ring, Orange	500/Pk 5000/Cs
1149Y14	labForce® Screw Cap with O-Ring, Red	500/Pk 5000/Cs
1149Y15	labForce® Screw Cap with O-Ring, Violet	500/Pk 5000/Cs
1149Y16	labForce® Screw Cap with O-Ring, Yellow	500/Pk 5000/Cs
1149Y17	labForce® Screw Cap with O-Ring, White	500/Pk 5000/Cs
1149Y18	labForce® Screw Cap with O-Ring, Black	500/Pk 5000/Cs
1149Y19	labForce® Screw Cap with O-Ring, Opaque Blue	500/Pk 5000/Cs
1149Y20	labForce® Screw Cap with O-Ring, Opaque Green	500/Pk 5000/Cs
1149Y21	labForce® Screw Cap with O-Ring, Opaque Orange	500/Pk 5000/Cs
1149Y22	labForce® Screw Cap with O-Ring, Opaque Red	500/Pk 5000/Cs
1149Y23	labForce® Screw Cap with O-Ring, Opaque Violet	500/Pk 5000/Cs
1149Y24	labForce® Screw Cap with O-Ring, Opaque Yellow	500/Pk 5000/Cs
1149Y25	labForce® Screw Cap with O-Ring, Opaque Assorted	500/Pk 5000/Cs

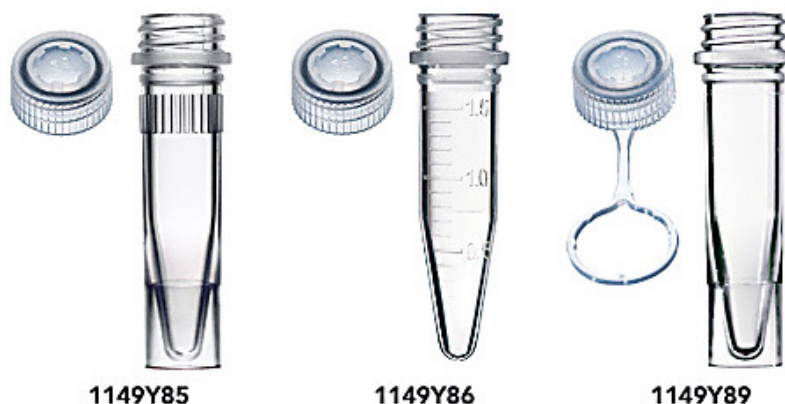
*For more options, visit [thomassci.com](https://www.thomassci.com/Molecular-Diagnostics/Storage/Tubes/Tubes/_/Standard-Screw-Caps):
https://www.thomassci.com/Molecular-Diagnostics/Storage/Tubes/Tubes/_/Standard-Screw-Caps

Screw Cap Tube Assemblies



Numerous tube and cap options are available to form an ideal combination for specific application, assembled for your convenience

- Manufactured from high-clarity, ultra-pure polypropylene (meets FDA 21 CFR 177.1520 & USP Class VI).
- Suitable for a wide range of temperatures—from -196°C to +121°C.
- Note: not suitable for immersion in liquid nitrogen.
- Ideal for boiling applications.
- Rated to 20,000 x G.
- Available in graduated versions, marked at every 100 µL to provide easy sample estimation.
- Offered with either skirted or conical bases.
- Sterile and certified free of detectable DNase, RNase, DNA, PCR inhibitors, and pyrogens.



0.5 mL Non-Grad Tube with Flat or Tethered Caps

labForce® Tube & Cap Assemblies

Thomas No.	Description	Qty
1149Y83	0.5mL Assembled Standard Clear Screw Cap & Tube, Skirted Base, Sterile	250/Pk 2500/Cs
1149Y84	0.5mL Assembled Tethered Clear Screw Cap & Tube, Skirted Base, Sterile	250/Pk 2500/Cs
1149Y86	1.5mL Assembled Screw Cap Tube, Conical Base, Graduations, Writing Area, Clear, Sterile	250/Pk 2500/Cs
1149Y88	1.5mL Assembled Screw Cap Tube, Skirted Base, Clear, Sterile	250/Pk 2500/Cs
1149Y89	1.5mL Assembled Tethered Screw Cap Tube, Skirted Base, Clear, Sterile	250/Pk 2500/Cs
1149Y90	2.0mL Assembled Screw Cap Tubes, Skirted Base, Ribbed, Clear, Sterile	250/Pk 2500/Cs
1149Y92	2.0mL Assembled Screw Cap Tube, Conical Base, Graduated, Writing Area, Clear, Sterile	250/Pk 2500/Cs
1149Y94	2.0mL Assembled Screw Tube, Skirted Base, Graduated, Writing Area, Clear, Sterile	250/Pk 2500/Cs
1149Y95	2.0mL Assembled Tethered Screw Tube, Skirted Base, Graduated, Writing Area, Clear, Sterile	250/Pk 2500/Cs

Freezer Boxes



Thomas No.	Description	Qty
1141Z25	labForce® 2" Cardboard Freezer Box with 81-Place Cell Divider and Indexing	10/Pk 50/Cs

Cardboard Freezer Boxes with Dividers and Indexing

- With a moisture-repellent coating to protect from condensation
- 81-Place or 100-Place Cell Divider
- Alphanumeric indexing



Cardboard Freezer Boxes with Dividers

- With a moisture-repellent coating to protect from condensation
- A grid on the inside of the box (81- and 100-place boxes) for easy lining up and location tracking



Thomas No.	Description	Qty
1141Q92	labForce® 2" Cardboard Freezer Box with 81-Place Cell Divider	10/Pk 50/Cs
1141Q93	labForce® 2" Cardboard Freezer Box with 100-Place Cell Divider	10/Pk 50/Cs



labForce® brings quality performance to the bench so you can stay focused on the science! Contact your Thomas Scientific sales representative today! Or head over to our samples page to view the samples we have available and fill out the form.

Today's Date *

Company *

First Name *

Last Name *

Email *

Business Phone *

Mailing Address *

Building / Lab Number

Mailing City *

Mailing State/Province *

Mailing Zip Code *



Tube Racks



labForce®
powered by *Thomas Scientific*



23A00A635



23A00A633

These compact, convenient 80 well racks are designed to keep your tubes neatly and efficiently organized. They are compatible with conical and self-standing microtubes and all wells have raised, molded numbers for quick identification.

The bottom of each well has been recessed to improve conical tube stability without sacrificing the stability of self-standing tubes. They are made of autoclavable polypropylene and are supplied in a rainbow pack of 5 racks (B, O, R, G, Y) or a single color of your choice.

- 80 well (5 rows of 16) for 1.5 to 2.0mL microtubes
- Rainbow pack available — 5 colors
- Two frosted marking areas, on the bottom and side
- Raised numbers beside each well
- Recessed well bottoms for improved tube stability

Thomas No.	Description	Qty
23A00A633	Tube Rack, fraction collector type, 80 x 1.5mL/2mL, assorted colors (B, G, R, Y, O)	5/Pk
23A00A634	Tube Rack, fraction collector type, 80 x 1.5mL/2mL, blue	5/Pk
23A00A635	Tube Rack, fraction collector type, 80 x 1.5mL/2mL, orange	5/Pk
23A00A636	Tube Rack, fraction collector type, 80 x 1.5mL/2mL, red	5/Pk
23A00A637	Tube Rack, fraction collector type, 80 x 1.5mL/2mL, green	5/Pk
23A00A638	Tube Rack, fraction collector type, 80 x 1.5mL/2mL, yellow	5/Pk
23A00A639	Rack, reversible, 96 x 1.5/2.0mL or 0.5mL, (113 x 199mm), Orange	5/Pk



23A00A641

labForce® benchtop tube racks and storage boxes are available in a variety of popular configurations. Racks and boxes are available to hold or store tubes from 0.1mL to 500mL.

Thomas No.	Description	Qty
23A00A640	Rack, freezer, PP, 81x2ml, (130x130x45mm) Rainbow Pak	5/Pk
23A00A641	Rack for 30x15 & 20x50ml (17x20x6cm) Orange	5/Pk



23A00A640

These new tube boxes have a removable white tube tray that can be kept filled with crushed ice or other temperature controlling materials. They also have a translucent cover. Temperature sensitive samples and assays in microtubes can be processed with an extra degree of temperature stability. Suitable for use with screw cap or snap cap microtubes from 0.5mL to 1.5/2.0mL Supplied 6 boxes per pack.

- Designed for crushed Ice
- Polypropylene, -80°C to 135°C
- Detachable “lift-off” lids
- For screw cap and snap cap tubes
- Economical



Thomas No.	Description	Qty
23A00A645	Ice Rack™ for 72 × 0.5mL tubes, detachable lid, tube platform, and base, numbered cavities, accepts snap cap and screw cap 0.5mL to 0.65mL tubes	6/Cs
23A00A646	Ice Rack™ for 72 × 1.5mL tubes, detachable lid, tube platform, and base, numbered cavities, accepts snap cap and screw cap 1.5mL to 2.0mL tubes	6/Cs
23A00A647	Ice Rack™ for 100 × 1.5mL tubes, detachable lid, tube platform, and base, numbered cavities, accepts snap cap and screw cap 1.5mL to 2.0mL tubes	6/Cs

Vials & Caps



9mm Polypropylene Screw Thread Vial

- 12x32mm vial with a 40% larger opening
- Ideal for Ion Chromatography, Capillary Electrophoresis, Atomic Absorption, pH sensitive samples, sodium, heavy metals analyses and aqueous samples
- Maximum temperature - 135°C



Thomas No.	Description	Qty
1159L99	100µL to 300µL Polypropylene Limited Volume Vial, 12x32mm, 9mm Thread	100/Pk 1000/Cs

9mm Vial with Fused Insert

- Manufactured from Type I borosilicate glass
- Designed to work in robotic arm autosamplers
- Marking spot

The fused insert also eliminates concerns about contaminants around the fused seam/ space between the neck of the vial and the insert.



Thomas No.	Description	Qty
1159M00	300µL Clear Vial with Fused Insert, 12x32mm, 9mm Thread with White	100/Pk

Autosampler Vials, 12x32mm with 9mm Screw Thread

- Manufactured from Type I borosilicate glass
- Designed to work in robotic arm autosamplers
- Made in the USA

labForce® Brand autosampler vials, 12x32mm with 9mm screw thread are designed to work in robotic arm autosamplers.



Thomas No.	Description	Qty
1159M01	2.0mL Clear Vial, 12x32mm, 9mm Thread	100/Pk 1000/Cs
1159M02	2.0mL Amber Vial, 12x32mm, 9mm Thread	100/Pk 1000/Cs

*For more options, please visit [thomassci.com](https://www.thomassci.com/Laboratory-Supplies/Autosampler-Vials/):
<https://www.thomassci.com/Laboratory-Supplies/Autosampler-Vials/> / Autosampler-Vials-12x32mm-with-9mm-Screw-Thread

Thomas No.	Description	Qty
1159M05	50µL Glass Large Opening Conical Limited Volume Insert, 6x25mm	100/Pk
1159M06	250µL Glass Large Opening Conical Limited Volume Insert, 6x29mm	100/Pk
1159M07	350µL Glass Flat Bottom Insert, 6x30mm	100/Pk 1000/Cs

Limited Volume Inserts

- 12x32mm vial with a 40% larger opening
- Manufactured from chemical resistant polypropylene
- Designed to work in robotic arm autosamplers
- Ideal for Ion Chromatography, Capillary Electrophoresis, Atomic Absorption, pH sensitive samples, sodium, heavy metals analyses and aqueous samples
- Maximum temperature - 135°C
- Made in the USA



Pre-Assembled 9mm Closures

labForce® Brand pre-assembled closures and septa come ready to use. Designed to work in robotic arm autosamplers.

Select the closure and liner combination for your sampling requirements.



Thomas No.	Description	Qty
1159M08	Smooth Cap, Royal Blue, PTFE/Butyl Rubber Lined	100/Pk 1000/Cs
1159M09	Smooth Cap, Black, PTFE/Silicone Lined	100/Pk 1000/Cs

*For more options, please visit [thomassci.com](https://www.thomassci.com/Laboratory-Supplies/Caps/):
<https://www.thomassci.com/Laboratory-Supplies/Caps/> / Pre-Assembled-9mm-Closures



labForce®
powered by Thomas Scientific

labForce® Low Lint Delicate Task Wipes

Perfect for the most sensitive jobs in the laboratory, the drafting room, the clinic, or any electronic applications because of their anti-static film cover that prevents accumulation and production of dust.

They are single ply in a pop-up box.



Thomas No.	Description	Qty
21A00A379	labForce® Low Lint Delicate Task Wipes 4-7/8 x 7-7/8	280/Pk 16800/Cs
21A00A380	labForce® Low Lint Delicate Task Wipes 14.5 x 16	140/Pk 2100/Cs

Thomas No.	Description	Qty
1141J51	labForce® HyBlot CL® Autoradiography Film, 5 x 7"	100/Bx
20A00H171	labForce® HyBlot CL® Autoradiography Film, 8 x 10"	100/Bx

HyBlot CL® Autoradiography Film

- For blotting & sequence autoradiography
- Use with ^{14}C , ^{35}S , ^{32}P , ^{33}P and ^{125}I
- Optimized for chemiluminescence
- Compatible with automatic or manual processors
- Ultra clear, dual emulsion

labForce® HyBlot CL® Film provides sharp, clear results without the foggy background or grainy images normally associated with non-blue films.

HyBlot CL®
Autoradiography Film

- Optimized for chemiluminescence
- High sensitivity and contrast
- For blotting and sequence applications
- Suitable for ^{14}C , ^{35}S , ^{32}P , ^{33}P , ^{125}I

labForce
powered by Thomas Scientific

Premium Autoradiography Film
8 x 10 in.
100 sheets
Cat No. 1141J52

To Order: ThomasSci.com

Open under safelight illumination only.
CAUTION: Film should be stored in a cool, dry place, properly protected from all forms of radiation.

NOTICE: Where this product will be repaired / defective in manufacturing, labeling or packing, it is sold without express or implied warranty or liability of any other kind.

Thomas Scientific, LLC • 1554 High Hill Road • Swedesboro, NJ 08085
P (800) 345-2100 • F (856) 467-1097 • ThomasSci.com

Check out the XtraClean® line of economy protective apparel.

Designed with safety top of mind, these disposable garments shield from everyday hazards in the lab.

Xtraclean XC8614 Cleanroom Lab Coats are made from heavyweight SMS (spunbond meltblow spunbond) non-woven fabric.

These breathable lab coats provide good air permeability, protecting against light fluid contact and particles, while offering comfort to the wearer.

Low-lint SMS is a clean barrier fabric, ideal to maintain integrity of the cleanroom. The XC8614 Lab Coats feature 5 snaps, knitted collar and cuffs and includes 3 pockets.

Available in Blue and White. Packed:
30 EA/CASE; Sizes: S - 3XL.



XTRACLEAN™
CLEANROOM ESSENTIALS
powered by Thomas Scientific

Nitrile Gloves

stretchease®
POWDER-FREE NITRILE EXAMINATION GLOVES

Stretchease®, Powder Free, Nitrile Exam Gloves



Introducing New and Improved Stretchease® Disposable Nitrile Gloves!

The most comfortable, most stretchable glove you've ever worn

New features include:

- Accelerator-Free (Low Dermatitis Potential)
- Chemotherapy Drug Resistant
- Fentanyl Resistant

The same Stretchease features you have grown to love!

- Powder-Free
- Latex-Free
- Finish: Textured Fingers
- Length – 9.5 inches
- Exceptional Strength
- Color: Periwinkle Blue
- Improved Elasticity: 650% (min)

Thomas No.	Description	Qty
1159G03-NI	Stretchease®, Powder Free, Nitrile Exam Gloves, 9.5 in, Ex-Small	100/Pk 1000/Cs
1159G04-NI	Stretchease®, Powder Free, Nitrile Exam Gloves, 9.5 in, Small	100/Pk 1000/Cs
1159G05-NI	Stretchease®, Powder Free, Nitrile Exam Gloves, 9.5 in, Medium	100/Pk 1000/Cs
1159G06-NI	Stretchease®, Powder Free, Nitrile Exam Gloves, 9.5 in, Large	100/Pk 1000/Cs
1159G07-NI	Stretchease®, Powder Free, Nitrile Exam Gloves, 9.5 in, Ex-Large	90/Pk 900/Cs
1159G13-NI	Stretchease®, Powder Free, Nitrile Exam Gloves, 9.5 in, 2X-Large	90/Pk 900/Cs



labForce® Wash Bottles



labForce® vented wash bottles are made from industrial grade low-density polyethylene with polypropylene stem closure and venting assembly. They are pre-printed with the Chemical name and formula, the National Fire Protection Association (NFPA) Section 704 Four-color Diamond, health hazards, Chemical Abstract System (CAS) number, and suggested protective clothing and equipment. Each bottle is compliant with GHS and OSHA requirements outlined in Hazard Communication Standard 29 CFR 1910.1200. Intended for use only with LDPE and PP compatible solvents.

Thomas No.	Description	Qty.
23A00D675	labForce® Water Vented Wash Bottle, Pack of 6, LDPE	6/Pk
23A00D676	labForce® Toluene Vented Wash Bottle, Pack of 6, LDPE	6/Pk
23A00D677	labForce® Sodium Hypochlorite Vented Wash Bottle, Pack of 6, LDPE	6/Pk
23A00D678	labForce® Methyl Ethyl Ketone Vented Wash Bottle, Pack of 6, LDPE	6/Pk
23A00D679	labForce® Methanol Vented Wash Bottle, Pack of 6, LDPE	6/Pk
23A00D680	labForce® Isopropanol Vented Wash Bottle, Pack of 6, LDPE	6/Pk
23A00D681	labForce® Ethyl Acetate Vented Wash Bottle, Pack of 6, LDPE	6/Pk
23A00D682	labForce® Ethanol Vented Wash Bottle, Pack of 6, LDPE	6/Pk
23A00D683	labForce® Distilled Water Vented Wash Bottle, Pack of 6, LDPE	6/Pk
23A00D684	labForce® Dichloromethane Vented Wash Bottle, Pack of 6, LDPE	6/Pk
23A00D685	labForce® Acetonitrile Vented Wash Bottle, Pack of 6, LDPE	6/Pk
23A00D686	labForce® Acetone Vented Wash Bottle, Pack of 6, LDPE	6/Pk

Bottles



Thomas No.	Description	Qty
1157G99	250mL HDPE Leakproof Wide Mouth Bottle, w/ 43-415 Linerless Cap, Assembled, Sterile	224/Cs
1162D42	1000mL HDPE Leak-proof Wide Mouth Bottle, Unassembled with 63-415 Linerless Cap in Box	50/Cs

*For more options, visit [thomassci.com](https://www.thomassci.com/Laboratory-Supplies/Wide-Mouth-Bottles/):
<https://www.thomassci.com/Laboratory-Supplies/Wide-Mouth-Bottles/> /HDPE-Leakproof-Bottles

HDPE Leakproof Bottles

- Translucent HDPE Resin
- Same dimension with PP linerless cap as Nalgene
- Leak-proof
- Lab grade quality at packaging costs
- 1000mL size bottle available in both wide and narrow mouth



HDPE Narrow Mouth Amber Bottles

- Safe for freezer storage down to -100°C
- Resistant to most corrosives

Narrow mouth bottles improve pouring of liquid contents making them perfect for storing and shipping liquids.

Amber bottles reduce UV light transmission to protect light sensitive contents during storage and transport. All these amber bottles comply with US Pharmacopoeia 23,661 requirements for maximum light transmission.



Thomas No.	Description	Qty
1139Y96	Bottle, Narrow Mouth Boston Round, Amber HDPE with Amber PP Closure, 30mL	12/Pk 72/Cs
1139Y97	Bottle, Narrow Mouth Boston Round, Amber HDPE with Amber PP Closure, 60mL	12/Pk 72/Cs

*For more options, visit [thomassci.com](https://www.thomassci.com/Laboratory-Supplies/Boston-Round-Bottles/):
<https://www.thomassci.com/Laboratory-Supplies/Boston-Round-Bottles/> /HDPE-Narrow-Mouth-Amber-Bottles

Thomas No.	Description	Qty
1139Z02	Bottle, Wide Mouth Round, Amber HDPE with Amber PP Closure, 30mL	12/Pk 72/Cs
1139Z03	Bottle, Wide Mouth Round, Amber HDPE with Amber PP Closure, 60mL	12/Pk 72/Cs

*For more options, visit [thomassci.com](https://www.thomassci.com/Laboratory-Supplies/Boston-Round-Bottles/):
<https://www.thomassci.com/Laboratory-Supplies/Boston-Round-Bottles/> /HDPE-Wide-Mouth-Amber-Bottles

HDPE Wide Mouth Amber Bottles

- 3 Safe for freezer storage down to -100°C
- Resistant to most corrosives

Wide mouth bottles are perfect for sample collection and facilitate rapid filling and emptying of solids, powders, and viscous liquids.



labForce® Amber Sterile HDPE Narrow Mouth Bottles

- Safe for freezer storage down to -100°C
- Resistant to most corrosives

Narrow mouth bottles improve pouring of liquid contents making them perfect for storing and shipping liquids.

Amber bottles reduce UV light transmission to protect light sensitive contents during storage and transport. All these amber bottles comply with US Pharmacopoeia 23,661 requirements for maximum light transmission.



Thomas No.	Description	Qty
21A00K1002	labForce® Amber Sterile HDPE Narrow Mouth Reagent Bottles 30ml	200/Cs
21A00K1003	labForce® Amber Sterile HDPE Narrow Mouth Reagent Bottles 60ml	200/Cs
21A00K1004	labForce® Amber Sterile HDPE Narrow Mouth Reagent Bottles 125ml	100/Cs

*For more options, visit [thomassci.com](https://www.thomassci.com/Laboratory-Supplies/Narrow-Mouth-Bottles/):
<https://www.thomassci.com/Laboratory-Supplies/Narrow-Mouth-Bottles/> /labForce-Amber-Sterile-HDPE-Narrow-Mouth-Reagent-Bottles

Bottles



Thomas No.	Description	Qty
21A00K988	labForce® Amber Sterile HDPE Wide Mouth Bottles, Closures Attached, 8ml	400/Cs
21A00K989	labForce® Amber Sterile HDPE Wide Mouth Bottles, Closures Attached, 15ml	400/Cs
21A00K990	labForce® Amber Sterile HDPE Wide Mouth Bottles, Closures Attached, 30ml	200/Cs

*For more options, visit [thomassci.com](https://www.thomassci.com/Laboratory-Supplies/Wide-Mouth-Bottles/):
<https://www.thomassci.com/Laboratory-Supplies/Wide-Mouth-Bottles/> /labForce-Amber-Sterile-HDPE-Wide-Mouth-Reagent-Bottles

labForce® Amber Sterile HDPE Wide Mouth Bottles

- labForce® Sterile Amber HDPE Wide Mouth bottles are made of high quality HDPE raw material
- produced in a Class 100,000 grade cleanroom production environment with multiple quality system certifications
- Non-biotoxic
- Resistant to low temperatures of -40°C
- Amber bottles are resistant to organic solvents



labForce® Translucent Sterile HDPE Narrow Mouth Bottles

- Made from natural HDPE
- Non-biotoxic
- highly resistant to leaks, liquid impact, and acids, resistant to low temperatures of -40°C and meets the requirements of autoclave processing
- DURABLE UNIFORM WALL THICKNESS
- CLEAN AND STERILE labForce® sterile HDPE bottles are free of DNase, RNase, protease, and exogenous DNA/RNA, and are non-pyrogenic



Thomas No.	Description	Qty
21A00K1000	labForce® Translucent Sterile HDPE Narrow Mouth Bottles, Closures Attached, 500ml	50/Cs
21A00K1001	labForce® Translucent Sterile HDPE Narrow Mouth Bottles, Closures Attached, 1000ml	27/Cs

*For more options, visit [thomassci.com](https://www.thomassci.com/Laboratory-Supplies/Narrow-Mouth-Bottles/):
<https://www.thomassci.com/Laboratory-Supplies/Narrow-Mouth-Bottles/> /labForce-White-Sterile-HDPE-Narrow-Mouth-Reagent-Bottles

Thomas No.	Description	Qty
21A00K982	labForce® Translucent Sterile HDPE Wide Mouth Bottles, Closures Attached, 30ml	200/Cs
21A00K983	labForce® Translucent Sterile HDPE Wide Mouth Bottles, Closures Attached, 60ml	200/Cs

*For more options, visit [thomassci.com](https://www.thomassci.com/Laboratory-Supplies/Wide-Mouth-Bottles/):
<https://www.thomassci.com/Laboratory-Supplies/Wide-Mouth-Bottles/> /labForce-White-Sterile-HDPE-Wide-Mouth-Reagent-Bottles

labForce® Translucent Sterile HDPE Wide Mouth Bottles

- labForce® Sterile Translucent HDPE Wide Mouth bottles are made of high-quality HDPE raw material
- Non-biotoxic
- highly resistant to leaks, liquid impact, and acids, resistant to low temperatures of -40°C and meets the requirements of autoclave processing
- CLEAN AND STERILE labForce® sterile HDPE bottles are free of DNase, RNase, protease, and exogenous DNA/RNA, and are non-pyrogenic.



2 Liter Natural HDPE Round Bottles

Wide-mouth lab bottle for filling ease and is used for liquid and sample storage.

HDPE body for transparency and low-temperature, impact and moisture resistance.

White polypropylene screw cap secures contents to help prevent spills and evaporation.



Thomas No.	Description	Qty
1171H69	Natural HDPE Round Bottle with a 63/485 White PP Heavy Duty Cap	18/Cs

Bottles



Thomas No.	Description	Qty
1139Z08	Narrow Mouth, PP Bottle, White PP 53mm Screw Cap, 2 Litres	2/Pk 12/Cs
1139Z09	Narrow Mouth, PP Bottle, White PP 83mm Screw Cap, 4 Litre	1/Ea 6/Cs
1139Z11	Narrow Mouth, Heavy Duty HDPE Bottle, White PP 83mm Screw Cap, 4 Litres (1.0 Gallons)	1/Ea 6/Cs
1139Z12	Filling and Venting Closure for Vacuum Bottle, White PP, 52mm	1/Ea
1139Z13	Filling and Venting Closure for Vacuum Bottle, White PP, 83mm	1/Ea

Heavy Duty Vacuum Bottles

These all new Heavy Duty Vacuum Bottles have thick walls to withstand the forces of repeated vacuum applications in the laboratory. Designed for liquid aspiration and transfer operations, the bottles come complete with a polypropylene (PP) cap and TPE gasket for leakproof sealing.

The polypropylene bottles are autoclavable and will hold vacuum for up to 24 hours at 20°C.

*For more options, visit [thomassci.com](https://www.thomassci.com/Laboratory-Supplies/Aspirator-Bottles/):
<https://www.thomassci.com/Laboratory-Supplies/Aspirator-Bottles/> / [Heavy-Duty-Vacuum-Bottles-1](https://www.thomassci.com/Laboratory-Supplies/Aspirator-Bottles/)



PP Wide Mouth Laboratory Bottles

- Manufactured from USP Class VI resin that is FDA -21CFR compliant for food contact
- BPA and Phthalate free
- Autoclavable and approved for use from -40 to 121°C
- Bottles are filled to 80% of nominal capacity, closed per minimum torque requirement



Thomas No.	Description	Qty
1155L56	Bottle, Wide Mouth, Round, PP with PP Closure, 30mL	12/Pk 72/Cs
1155L57	Bottle, Wide Mouth, Round, PP with PP Closure, 30mL	1000/ Cs

*For more options, visit [thomassci.com](https://www.thomassci.com/Laboratory-Supplies/Wide-Mouth-Bottles/):
<https://www.thomassci.com/Laboratory-Supplies/Wide-Mouth-Bottles/> / [PP-Wide-Mouth-Laboratory-Bottles](https://www.thomassci.com/Laboratory-Supplies/Wide-Mouth-Bottles/)

Thomas No.	Description	Qty
1162D95	Disposable Vacuum Bottle Top Filter, 0.2um Sterilizing PTFE Membrane, 500mL	12/Cs
1147H76	Disposable Vacuum Bottle Top Filter, 0.45um Nylon Membrane for Clarification and Prefiltration, 500mL	12/Cs

*For more options, visit [thomassci.com](https://www.thomassci.com/Laboratory-Supplies/Bottle-Top-Filters/):
<https://www.thomassci.com/Laboratory-Supplies/Bottle-Top-Filters/> / [labForce-Solvent-Filtration-Disposable-Vacuum-Bottle-Top-Filters](https://www.thomassci.com/Laboratory-Supplies/Bottle-Top-Filters/)

Solvent Filtration Disposable Vacuum Bottle Top Filters

The labForce® Solvent Filtration Bottle Top Vacuum Filters offer a revolutionary approach to bulk solvent filtration. Safer, faster, and easier to use than conventional glass filtration assemblies, labForce's® Solvent Filtration funnels screw onto any vacuum-capable GL45 threaded bottle. Non-sterile.



Natural HDPE Cylinder Bottles

Purchasing assembled sampling containers reduces the chance of contamination. These narrow mouth bottles are used for liquids. The F-217 foam lined caps seal with the least oxygen transfer.



Thomas No.	Description	Qty
1159K72	4oz Natural HDPE Cylinder, Assembled with 24-410 F-217 Lined Cap	728/Cs
1159K73	8oz Natural HDPE Cylinder, Assembled with 24-410 F-217 Lined Cap	351/Cs
1159K74	16oz Natural HDPE Cylinder, Assembled with 24-410 F-217 Lined Cap	340/Cs
1159K75	32oz Natural HDPE Cylinder, Assembled with 28-410 F-217 Lined Cap	152/CS

Bottles



Thomas No.	Description	Qty
21A00Q104	labForce® Sterile Square PET Media Bottles 30ml	40/Pk 200/Cs
21A00Q105	labForce® Sterile Square PET Media Bottles 60ml	24/Pk 96/Cs
21A00Q099	labForce® Sterile Square PET Media Bottles 125ml	24/Pk 96/Cs
21A00Q100	labForce® Sterile Square PET Media Bottles 250ml	30/Pk 60/Cs
21A00Q101	labForce® Sterile Square PET Media Bottles 500ml	20/Pk 40/Cs
21A00Q102	labForce® Sterile Square PET Media Bottles 1000ml	12/Pk 24/Cs

Sterile Square PET Media Bottles

labForce® square media bottles are made of high-quality PET material through precision molds and automated equipment, with high transparency and high durability. These bottles are ideal for long-term storage of aqueous solutions, such as the storage of serum, culture medium, pancreatin, reagents and other products.



Natural HDPE Oblong Bottles

Oblong shape for space-efficient storage and commonly for use in applications that require a wide width, shallow depth and a small neck.



Thomas No.	Description	Qty
1171H52	1L Graduated in 100mL Increments, Assembled w/ 53-400 F-217 Lined Cap	12/Cs
1171H54	1L Graduated in 100mL Increments, Assembled w/ 53-400 F-217 Lined Cap	75/Cs



Serving the scientific community for over 100 years, we put our customers first!

We have partnered with hundreds of customers to provide best-in-class vendor managed inventory programs with you in mind. We have a proven track record to manage customer inventory freeing you up to manage your business.

Let us be your Integrated Partner!

Boston Round Bottles

labForce[®]
powered by Thomas Scientific



Pre-Assembled Amber Boston Rounds with F-217 Foam Lined Cap

Purchasing assembled bottles reduces sample contamination and streamlines ordering and inventory needs. Amber color protects contents from UV Light. F-217 Foam Liners seal with the least oxygen transfer.

*For more options, visit [thomassci.com](https://www.thomassci.com):

https://www.thomassci.com/Laboratory-Supplies/Boston-Round-Bottles/_/Pre-Assembled-Amber-Boston-Rounds-with-F-217-Foam-Lined-Cap

Thomas No.	Description	Qty
1163X88	1oz 20-400 F-217 Lined Cap, Bulk Case	432/Cs
1163X89	1oz Assembled with 20-400, Convenience Case	48/Cs

Thomas No.	Description	Qty
1163X77	1oz with 20-400 PTFE Lined Cap, Bulk Case	432/Cs
1163X79	2oz with 20-400 PTFE Lined Cap, Bulk Case	288/Cs

Pre-Assembled Amber Boston Rounds with PTFE Lined Cap

Purchasing assembled bottles reduces sample contamination and streamlines ordering and inventory needs. Amber color protects contents from UV Light. PTFE liners are inert. The best choice for use with acids and corrosive liquids.

*For more sizes information, visit [thomassci.com](https://www.thomassci.com):

https://www.thomassci.com/Laboratory-Supplies/Boston-Round-Bottles/_/Pre-Assembled-Amber-Boston-Rounds-with-PTFE-Lined-Cap

Pre-Assembled Amber Boston Rounds with Phenolic Poly Cone Lined Cap

Purchasing assembled bottles reduces sample contamination and streamlines ordering and inventory needs. Amber color protects contents from UV Light. Polycone caps seal the inner neck of the bottle when screwed in place.

*For more options, visit [thomassci.com](https://www.thomassci.com):

https://www.thomassci.com/Laboratory-Supplies/Boston-Round-Bottles/_/Pre-Assembled-Amber-Boston-Rounds-with-Phenolic-Poly-Cone-Lined-Cap

Thomas No.	Description	Qty
1163X66	1oz- 20-400 Black cap, Bulk Case	432/Cs
1163X67	1oz with 20-400 Black Cap, Convenience Case	48/Cs



Pre-Assembled Clear Boston Rounds with F-217 Foam Lined Cap

Purchasing assembled bottles reduces sample contamination and streamlines ordering and inventory needs. F-217 foam lined caps seal the bottle with the least oxygen transfer.

*For more options, visit [thomassci.com](https://www.thomassci.com):

https://www.thomassci.com/Laboratory-Supplies/Boston-Round-Bottles/_/Pre-Assembled-Clear-Boston-Rounds-with-F-217-Foam-Lined-Cap

Thomas No.	Description	Qty
1162A45	1oz with 20-400 White F-217 Lined Cap, Bulk Case	432/Cs
1162A46	1oz with 20-400 White F-217 Lined Cap, Convenience Case	48/Cs

Thomas No.	Description	Qty
1162A67	1oz, with 20-400, Bulk Case	432/Cs
1162A68	1oz, with 20-400 Convenience Case	48/Cs

Pre-Assembled Clear Boston Rounds with PTFE Lined Cap

Purchasing assembled bottles reduces sample contamination and streamlines ordering and inventory needs. The PTFE lined cap is inert making it a great option for use with strong acids and corrosive liquids.

*For more options, visit [thomassci.com](https://www.thomassci.com):

https://www.thomassci.com/Laboratory-Supplies/Boston-Round-Bottles/_/Pre-Assembled-Clear-Boston-Rounds-with-PTFE-Lined-Cap



labForce®
powered by Thomas Scientific



Pre-Assembled Amber Wide Mouth Packers with PTFE Lined Cap

Purchasing assembled jars reduces sample contamination and streamlines ordering and inventory needs. The amber color protects light sensitive materials. The PTFE lined cap is inert and is excellent choice for use with strong acids and corrosive materials.

Thomas No.	Description	Qty
1162A00	1.25L with 70-400 PTFE Lined Cap	24/Cs
1163Z90	15mL with 28-400 PTFE Lined Cap	624/Cs
1163Z91	30mL with 28-400 PTFE Lined Cap, Bulk Case	432/Cs

*For more options, visit [thomassci.com](https://www.thomassci.com/Laboratory-Supplies/Wide-Mouth-Bottles/_/Pre-Assembled-Amber-Wide-Mouth-Packers-with-PTFE-Lined-Cap):
https://www.thomassci.com/Laboratory-Supplies/Wide-Mouth-Bottles/_/Pre-Assembled-Amber-Wide-Mouth-Packers-with-PTFE-Lined-Cap

Pre-Assembled Amber Wide Mouth Packers with F-217 Foam Lined Cap

Purchasing assembled jars reduces sample contamination and streamlines ordering and inventory needs. The amber color protects light sensitive materials. The F-217 lined cap provides a seal with the least oxygen transfer.

Thomas No.	Description	Qty
1163Z79	15mL with 28-400 F-217 Foam Lined Cap	624/Cs
1163Z80	30mL with 28-400 F-217 Foam Lined Cap, Bulk Case	432/Cs
1163Z81	30mL with 28-400 F-217 Foam Lined Cap, Convenience Case	24/Cs

*For more options, visit [thomassci.com](https://www.thomassci.com/Laboratory-Supplies/Wide-Mouth-Bottles/_/Pre-Assembled-Amber-Wide-Mouth-Packers-with-F-217-Foam-Lined-Cap):
https://www.thomassci.com/Laboratory-Supplies/Wide-Mouth-Bottles/_/Pre-Assembled-Amber-Wide-Mouth-Packers-with-F-217-Foam-Lined-Cap

Pre-Assembled Natural HDPE Wide Mouth Packers with F-217 Foam Lined Cap

Purchasing assembled sampling containers reduces the chance of contamination. These wide mouth bottles are used for both liquids and solids. The F-217 foam lined caps seal with the least oxygen transfer.



Thomas No.	Description	Qty
1163Z70	60mL 33-400 F-217 Foam Lined Cap	1000/Cs
1163Z71	120mL with 38-400 F-217 Foam Lined Cap, Bulk Case	450/Cs
1163Z72	120mL with 38-400 F-217 Foam Lined Cap, Convenience Case	24/Cs
1163Z73	250mL with 45-400 F-217 Foam Lined Cap, Bulk Case	200/Cs

*For more information, visit [thomassci.com](https://www.thomassci.com/Laboratory-Supplies/Wide-Mouth-Bottles/_/Pre-Assembled-Natural-HDPE-Wide-Mouth-Packers-with-F-217-Foam-Lined-Cap):
https://www.thomassci.com/Laboratory-Supplies/Wide-Mouth-Bottles/_/Pre-Assembled-Natural-HDPE-Wide-Mouth-Packers-with-F-217-Foam-Lined-Cap

Jars & Jugs



Natural HDPE Straight Sided Jars

Purchasing assembled sampling containers reduces the chance of contamination. These wide mouth jars are used for creams, pastes and solids. The contents can be easily removed from the straight sided jar. The F-217 foam lined caps seal with the least oxygen transfer.



Thomas No.	Description	Qty
1159K76	4oz, Assembled with 70-400 F-217 Lined Cap	400/Cs
1159K79	32oz Natural HDPE Straight Sided Jar, Assembled with 89-400 F-217 Lined Cap	108/Cs
20A00U994	8oz Nat HDPE Str Jar w/70-400 F-217 Cap	378/Cs
23A00A495	16oz Natural HDPE Straight Sided Jar Assembled w/89-400 F-217 Lined Cap	216/Cs

Thomas No.	Description	Qty
1163X99	2oz Clear Straight Sided Jar Assembled with 53-400 PTFE Lined Cap	24/Cs
1163Y00	4oz Clear Straight Sided Jar Assembled with 58-400 PTFE Lined Cap	24/Cs
1163Y01	8oz Clear Straight Sided Jar Assembled with 70-400 PTFE Lined Cap	24/Cs
1163Y02	16oz Clear Straight Sided Jar Assembled with 89-400 PTFE Lined Cap	12/Cs
1163Y03	32oz Clear Straight Sided Jar Assembled with 89-400 PTFE Lined Cap	12/Cs
1163Y04	2oz Amber Straight Sided Jar Assembled with 53-400 PTFE Lined Cap	24/Cs
1163Y05	4oz Amber Straight Sided Jar Assembled with 58-400 PTFE Lined Cap	24/Cs
1163Y06	8oz Amber Straight Sided Jar Assembled with 70-400 PTFE Lined Cap	24/Cs

Clear & Amber Straight Sided Jars

Purchasing assembled jars reduces sample contamination and streamlines ordering and inventory needs. The amber color protects light sensitive materials.

The PTFE lined cap is inert making it a great option for use with strong acids and corrosive materials. The F-217 Foam liners seal with the least oxygen transfer.



*For more options, visit [thomassci.com](https://www.thomassci.com):

https://www.thomassci.com/Laboratory-Supplies/jars/_/Clear-And-Amber-Straight-Sided-Jars

Natural HDPE Bleach Style Jugs

Purchasing assembled sampling containers reduces the chance of contamination. These narrow mouth bottles are used for liquids. The F-217 foam lined caps seal with the least oxygen transfer.



Thomas No.	Description	Qty
1159K80	64oz (1/2 gallon) Natural HDPE Bleach Style Jug, Assembled with 38-400 F-217 Lined Cap	40/Cs
1159K81	128oz (1 gallon) Natural HDPE Bleach Style Jug, Assembled with 38-400 F-217 Lined Cap	40/Cs
1159K82	128oz (1 gallon) Natural HDPE Bleach Style Jug, Assembled with 38-400 F-217 Lined Cap (Convenience Pack)	48/Pk



Thomas No.	Description	Qty
1198J03	Carboy, Amber HDPE, 2.5L, VersaCap 80	1/Ea
1198J04	Carboy, Amber HDPE, 5L, No Spigot, VersaCap 80	1/Ea
1198J05	Carboy, Amber HDPE, 10L, No Spigot, VersaCap 80	1/Ea

*For more options, visit [thomassci.com](https://www.thomassci.com/Laboratory-Supplies/Carboys/):
<https://www.thomassci.com/Laboratory-Supplies/Carboys/> /
[EZgrip-Amber-HDPE-Carboy](https://www.thomassci.com/Laboratory-Supplies/Carboys/)

EZgrip® Amber HDPE Carboys

- VersaCap™ technology provides the flexibility of interchangeable top connections
- Large, molded-in graduation marks with $\pm 5\%$ accuracy
- Autoclavable spigot and VersaBarb™ technology
- EZfil™ 120 mm wide-mouth for easy filling and cleaning



VersaCaps™, VersaBarbs™, and spigots are autoclavable. The recommended autoclaving cycle is 20 minutes at 15 PSI and 121°C (250°F).

EZgrip® Copolyester Carboys

- VersaCap™ technology provides the flexibility of interchangeable top connections
- Large, molded-in graduation marks with $\pm 5\%$ accuracy
- Autoclavable spigot and VersaBarb™ technology
- EZfil™ 120 mm wide-mouth for easy filling and cleaning

VersaCaps™, VersaBarbs™, and spigots are autoclavable. The recommended autoclaving cycle is 20 minutes at 15 PSI and 121°C (250°F).



Thomas No.	Description	Qty
1198H99	Carboy, Copolyester, 2.5L, VersaCap 80	1/Ea
1198J00	Carboy, Copolyester, 5L, No Spigot, VersaCap 80	1/Ea
1198J01	Carboy, Copolyester, 10L, No Spigot, VersaCap 80	1/Ea
1198J02	Carboy, Copolyester, 20L, No Spigot, VersaCap 120	1/Ea

Thomas No.	Description	Qty
1198H77	Carboy, HDPE, 2.5L, VersaCap 80	1/Ea
1198H78	Carboy, HDPE, 5L, No Spigot, VersaCap 80	1/Ea
1198H79	Carboy, HDPE, 5L, Spigot, VersaCap 80	1/Ea

*For more options, visit [thomassci.com](https://www.thomassci.com/Laboratory-Supplies/Carboys/):
<https://www.thomassci.com/Laboratory-Supplies/Carboys/> /
[EZgrip-HDPE-Carboy](https://www.thomassci.com/Laboratory-Supplies/Carboys/)

EZgrip® HDPE Carboys

- VersaCap™ technology provides the flexibility of interchangeable top connections
- Large, molded-in graduation marks with $\pm 5\%$ accuracy
- Autoclavable spigot and VersaBarb™ technology
- EZfil™ 120 mm wide-mouth for easy filling and cleaning

VersaCaps™, VersaBarbs™, and spigots are autoclavable. The recommended autoclaving cycle is 20 minutes at 15 PSI and 121°C (250°F).



EZgrip® Polycarbonate Carboys

The EZgrip® Carboys are designed to provide users with a highly versatile container that maximizes storage efficiency and ease of use. The distinctive rectangular shape saves valuable bench space. Molded grips in the base provide a full, secure grip to make lifting, handling, and pouring easy.



Thomas No.	Description	Qty
1171Z59	Carboy, 20L, PC, 120mm Cap	1/Ea

Thomas No.	Description	Qty
1171Z60	Carboy, PP, 5L, Dark Amber, 83mm Cap	1/Ea
1171Z62	Carboy, PP, 20L, Dark Amber, 120mm Cap	1/Ea
1171Z63	Carboy, PP, 40L, Dark Amber, Green 120mm Cap	1/Ea

*For more options, visit [thomassci.com](https://www.thomassci.com/Laboratory-Supplies/Carboys/):
<https://www.thomassci.com/Laboratory-Supplies/Carboys/> /
[EZgrip-Polypropylene-Carboys](https://www.thomassci.com/Laboratory-Supplies/Carboys/)

EZgrip® Polypropylene Carboys

- VersaCap™ technology provides the flexibility of interchangeable top connections
- Large, molded-in graduation marks with $\pm 5\%$ accuracy
- Autoclavable spigot and VersaBarb™ technology
- EZfil™ 120 mm wide-mouth for easy filling and cleaning

EZgrip® Polypropylene Carboys, VersaCaps™, VersaBarbs™, and spigots are autoclavable. The recommended autoclaving cycle is 20 minutes at 15 PSI and 121°C (250°F).



Weigh Boats & Dishes



Anti-Static Pour-Boat Weighing Dishes

- Temperature range -10 to 70°C (14 to 158°F)
- Can be used with microwave moisture analyzers
- 1 color, 3 sizes
- All are FDA/food-grade compliant

labForce® flexible polystyrene boats feature smooth surfaces to provide accurate pour-outs with minimal sample loss. Pour-spout design easily dispenses samples without flexing the dish. Flat-bottom dishes are made from 12-mil thick polystyrene for better strength, stability, and handling.



Thomas No.	Description	Qty
1163Z50	Pour-Boat Weighing Dish, Anti-Static, White, Small (43 x 58 x 13mm)	500/Pk
1163Z51	Pour-Boat Weighing Dish, Anti-Static, White, Medium (83 x 132 x 26mm)	500/Pk
1163Z52	Pour-Boat Weighing Dish, Anti-Static, White, Large (108 x 183 x 26mm)	500/Pk

Thomas No.	Description	Qty
1163Z63	Aluminum Weighing Boat, Small, 43mm dia x 12mm H	100/Pk
1163Z64	Aluminum Weighing Boat, Medium, 57mm dia x 14mm H	100/Pk
1163Z65	Aluminum Weighing Boat, Large, 70mm dia x 16mm H	100/Pk

Aluminum Weighing Boats

- All weigh boats are FDA/food-grade compliant
- Disposable
- 3 sizes
- Packs of 100

Sturdy yet lightweight boats feature a smooth, flat bottom for sample handling.



Aluminum Weighing Dishes

- Bend flexible boats at points to form pour spouts
- Flat bottoms and sloping sides provide accurate transfer
- Temperature range -10 to 70°C (14 to 158°F)
- All are FDA/food-grade compliant
- Can be used with microwave moisture analyzers
- Anti-static version only
- 1 color, 4 sizes
- Disposable



Thomas No.	Description	Qty
1163Z66	Aluminum Weighing Dish, Large, 101mm dia x 8mm H	50/Pk

Thomas No.	Description	Qty
1163Z59	Anti-Static, White, Small (38 x 25 x 9mm)	500/Pk
1163Z60	Anti-Static, White, Medium (64 x 51 x 19mm)	500/Pk
1163Z61	Hexagonal Weigh Boat, Anti-Static, White, Large (102 x 76 x 22mm)	500/Pk
1163Z62	Hexagonal Weigh Boat, Anti-Static, White, X-Large (127 x 89 x 31mm)	500/Pk

Hexagonal Weighing Boats

- Bend flexible boats at points to form pour spouts
- Flat bottoms and sloping sides provide accurate transfer
- Temperature range -10 to 70°C (14 to 158°F)
- All are FDA/food-grade compliant
- Anti-static version only
- 1 color, 4 sizes
- Disposable





labForce®
powered by *Thomas Scientific*



Thomas No.	Description	Qty
21A00F442	labForce® Micro Weigh Boat	250/Pk 2500/Cs

labForce® Micro Weigh Boat

- Large tabs make boats easy to use, position and hold, especially with forceps
- Inert material enables the boat and contents to be added to solutions to aid 100% sample recovery, where protocols allow
- Anti-static properties prevent sample retention from static electricity
- Small surface area reduces liquid sample evaporation



Standard Weighing Boats

- Manufactured and packaged in a clean room
- Select white or blue for best color contrast to ensure sample is completely removed
- Temperature range -10 to 70°C (14 to 158°F)
- Boats are shallow with a wide, flat bottom to resist tipping
- 2 colors, and 3 sizes available
- Disposable

labForce® flexible polystyrene weighing boats feature smooth surfaces to provide accurate pour-outs with minimal sample loss.

Thomas No.	Description	Qty
1163Z53	Regular, White, Small (46 x 46 x 8mm)	500/Pk
1163Z54	Anti-Static, White, Small (46 x 46 x 8mm)	500/Pk
1163Z55	Regular, White, Medium (85 x 85 x 24mm)	500/Pk
1163Z56	Anti-Static, White, Medium (85 x 85 x 24mm)	500/Pk
1163Z57	Regular, White, Large (140 x 140 x 22mm)	500/Pk
1163Z58	Anti-Static, White, Large (140 x 140 x 22mm)	500/Pk
1163Z67	Regular, Blue, Small (46 x 46 x 8mm)	500/Pk
1163Z68	Regular, Blue, Medium (85 x 85 x 24mm)	500/Pk
1163Z69	Regular, Blue, Large (140 x 140 x 22mm)	500/Pk



Dual Purpose Lab Scoops

- Made from anti-static polystyrene that is waterproof and reduces the chance of materials sticking to the scoop
- Ships and stores flat and when ready to use, is easy to assemble by inserting the locking tab into the hole
- Locking tab feature enables a scoop shape to help retain materials
- Broad tip design keeps the scoop stable while on the scale and enables materials to be easily scooped and dispensed
- Disposable



Thomas No.	Description	Qty
1155M50	Dual Purpose Scoops, Large, White, Non-Sterile	100/Pk
1155M51	Dual Purpose Scoops, Large, White, Non-Sterile	100/Pk
1155M52	Dual Purpose Scoops, Large, Black, Sterile	100/Pk

labForce® Dual Purpose Lab Scoops are a unique economical solution that combines the function of a scoop and a weigh boat into one product.

The weighing process has been streamlined, now just sample or retrieve the material in the scoop and place it directly on the scale. This eliminates the need for a weigh boat or weighing paper and saves valuable space in the lab.



Thomas Scientific has the solution for your solution in our exclusive chemForce® line!

- Acids
- pH Buffers
- Dessicants
- ASTM Type I & Type II Water

[Click Here for our chemForce® catalog.](#)





labForce®
powered by Thomas Scientific



labForce® Polycarbonate Erlenmeyer Shaker Flasks

- Polycarbonate Material
- Baffled Base
- Free of RNase, DNase, pyrogen, endotoxins and human DNA.
- Individually wrapped and gamma sterilized to SAL 10-6
- Autoclavable and Reusable
- Vented Caps
- 0.2µm Filter
- Available in 2 sizes for multiple fits

labForce® Erlenmeyer Shaker Flasks are made of polycarbonate to support many culturing techniques and storing of culture media. The flask material is durable, shatter resistant and lightweight compared to glass flasks. Polycarbonate Flasks are autoclavable at 121°C and 15PSI for 30 minutes. PETG options available. Caps sold separately.

Thomas No.	Description	Qty
23A00R180	125ml, Sterile	24/Cs
23A00R181	250ml, Sterile	12/Cs
23A00R182	500ml, Sterile	12/Cs
23A00R183	1000ml, Sterile	6/Cs
23A00R184	Cap for 125ml and 250ml includes filter.	10/Pk
23A00R185	Cap for 500ml and 1000ml, includes filter	10/Pk

Thomas No.	Description	Qty
23A00R186	2.8L, baffled bottom w / vented screw cap, Sterile	6/Cs
23A00R187	Fernbach, 5.0L, w / vented screw cap, Sterile, 4 / 5.0 liter, baffled bottom, Sterile	4/Cs
23A00R188	Cap for 2.8 and 5.0L Jumbo Flasks, includes filter	10/Pk

labForce® Jumbo Styrene Butadiene Erlenmeyer Shaker Flasks

- Styrene Butadiene
- Baffled Base
- Free of RNase, DNase, pyrogen, endotoxins and human DNA.
- Individually wrapped and gamma sterilized to SAL 10-6
- Autoclavable and Reusable
- Vented Caps
- 0.2µm Filter
- Available in 2 sizes for multiple fits

labForce® Jumbo Erlenmeyer/Fernbach Shaker Flasks are made of Styrene Butadiene to support many culturing techniques and storing of culture media. The flask material is durable, shatter resistant and lightweight compared to glass flasks. Caps sold separately.

labForce® PETG Erlenmeyer Shaker Flasks

- Polyethylene Terephthalate Glycol (PETG) Material
- Flat Base
- Free of RNase, DNase, pyrogen, endotoxins and human DNA.
- Individually wrapped and gamma sterilized to SAL 10-6
- Single-Use
- Vented Caps
- 0.2µm Filter
- Available in 2 sizes for multiple fits

labForce® PETG Erlenmeyer Shaker Flasks are designed for suspension of cell culture, media prep, mixing and storage. The flask material is durable, shatter resistant and lightweight compared to glass flasks. Polycarbonate options available. Caps sold separately.

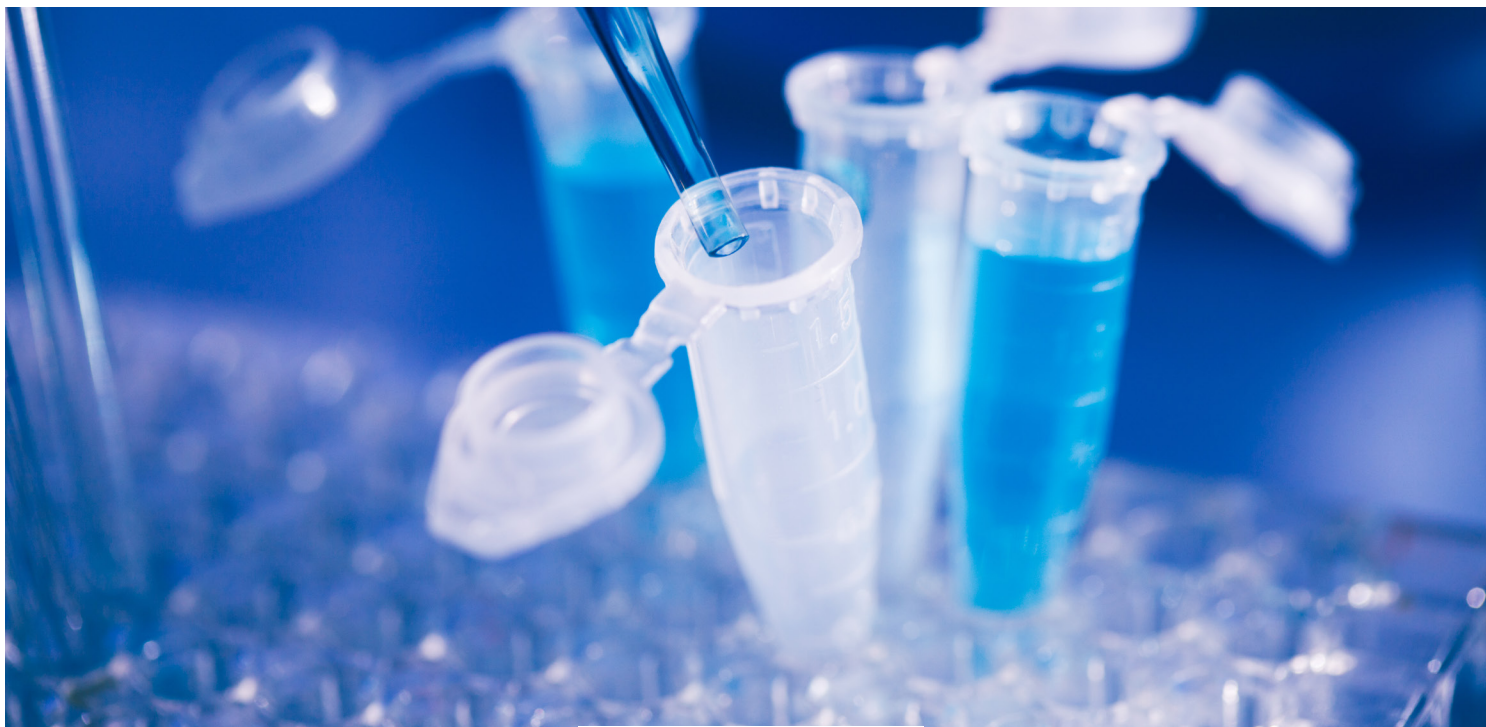
Thomas No.	Description	Qty
23A00R189	125ml, w / vented screw cap, sterile, indiv wrapped	24/Cs
23A00R190	250ml, w / vented screw cap, Sterile, indiv wrapped	12/Cs
23A00R191	500ml, w / vented screw cap, Sterile, indiv wrapped	12/Cs
23A00R192	1000ml, w / vented screw cap, Sterile, indiv wrapped	6/Cs

*For more options, visit [thomassci.com](https://www.thomassci.com/Laboratory-Supplies/Erlenmeyer-Flasks/_/labForce-PETG-Erlenmeyer-Shaker-Flasks):
https://www.thomassci.com/Laboratory-Supplies/Erlenmeyer-Flasks/_/labForce-PETG-Erlenmeyer-Shaker-Flasks

Notes: _____

Notes: _____

Notes: _____



Thomas Scientific's complete line of private label products are available online at www.thomassci.com, please search for "CE-Force[®]", chemForce[™], labForce[®], M1, safeForce[™], XtraClean[®]".

Let us know how we can help you with all of your laboratory needs.

See our catalogs for Laboratory Equipment & Instrumentation.



In addition to offering our most complete product line of Laboratory Supplies & Consumables Thomas Scientific is capable of assisting with most of your laboratory needs.

Please see our other channel offerings from Chemicals, Clinical and Molecular Diagnostics, Equipment and Furniture, and Critical Environments.

Please request a Rep roster to find the Thomas sales person for your location. Thomas Scientific is here to help you! To request a quote or for more information go to: <https://www.thomassci.com/Request-Quotes-Services>

Thomas Scientific Sales Representative

Phone

Email



customerservice@thomassci.com



833.544.7447



thomassci.com

