

New Inverted Biological Microscope simplifies, exemplifies



centering telescoping eye piece ensures optimum position

Easy to use, Outstanding Views

Designed to plug in and use, this Jenco International Inverted minimizes knob turning, button pushing for optimum views, quickly.

Infinity Planachromatic objectives provide extraordinary image resolution, uncommon for instruments in this price category.

Brilliant Phase Contrast, **including 5X** phase contrast as standard, durable anulus easily inserts at eye level. Phase

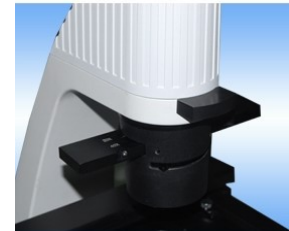
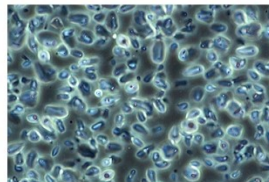


Comfort, Convenience Designed In



Quickly find your specimen with $\Phi 22\text{mm}$ wide field 10X eye piece, high eye point 45° incline

Digital imaging, simply add a Jenco camera to the trinocular port



Ultra long 70mm working distance condenser, pre-centered at proper height

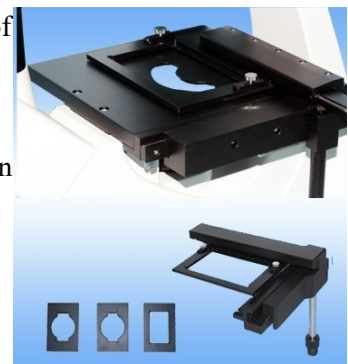


3.5 watt LED with dimmer control lasts 10,000 hours

Clean look leads to smooth operation, focus/light control

Controls a natural fit when you sit in front of this instrument

Mechanical stage, removable, controls down low by hand





If relocating, use the Integrated Handle for transporting ease

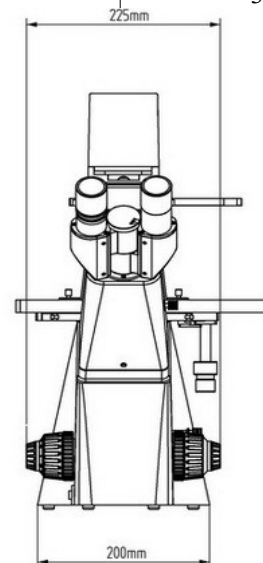
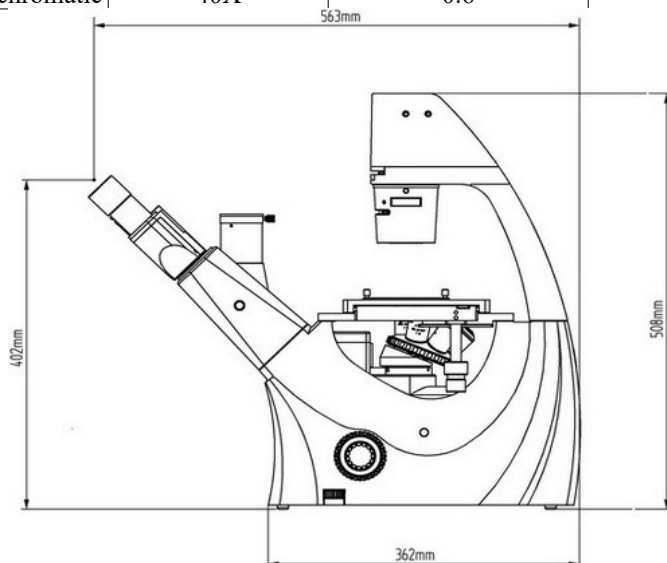
Serving Life Science and Clinical applications; factory assembled at our USA location to Jenco International Inc. specifications, including quality control requirements established and tested over 15 years of microscope design, assembly, production and service.
5 Year Warranty



Standard with 10X eye pieces, Φ 22mm. inclined 45°; phase telescoping eyepiece, Infinity Plan objectives below, dust cover, spare fuse, power cord and anti-microbial treatment on frame and head.
Power AC 110-220V, 50/60 Hz

Objective Lens Specifications - Jenco model CP-5:

Infinity Objectives	Magnification	Numerical Aperture (mm)	Field of View with 10X Eye Piece (mm)	Working Distance Bright Field (mm)
Planachromatic	10X	0.25	1.8	8.1
Planachromatic	20X	0.4	0.72	4.8
Planachromatic	40X	0.6	0.45	3.3
Phase Planachromatic	5X	0.1	1.8	8.1
Phase Planachromatic	10X	0.25	1.8	8.1
Phase Planachromatic	20X	0.4	0.72	4.8
Phase Planachromatic	40X	0.6	0.45	3.3



Dimensions: LWH (inches/cm) 22 x 8.7 x 20/ 56 x 22 x 51 Weight 25 lbs. 11.4 Kg.